

# Pānui Community Update

Tekau mā waru o Mahuru

## Te Pānui o te Koromatua

It was good to see the Council and the community celebrate Te Wiki o te Reo Māori (Māori Language Week). At COVID-19 Level 2 let's all continue to be careful. As well as hand washing and physical distancing around people we don't know, the other important thing to do is keep tracking where we have been either with our phones or a manual booklet.

Council now has a supply of manual tracing booklets available for individuals, businesses and community groups. The residential developments are progressing with further enquiries about house and land packages in Central Cove and continued interest for the Porritt Glade Lifestyle Village. The first six units at Porritt Glade Lifestyle Village have been sold and we are now moving into the second building phase of another six.

There are several large projects about to start in the district, including the River Road culvert replacements. You may have also seen that site works are starting on the roundabout at the Kawerau Putauaki Industrial Development. Meanwhile, a huge congratulations to the Kawerau Youth Council and everyone who supported them for the high-quality 'virtual Young Achiever Awards' last week. A total of 127 young achievers were acknowledged this year for their hard work, dedication and success in their respective sporting, academic or cultural activities.

At the end of this month, we will recognise others with the Kawerau Community Awards. Depending on whether we are still at Level 2 will determine how we run these awards. But what is important is that there we do acknowledge those who make our district a better place.

- Mayor Malcolm Campbell

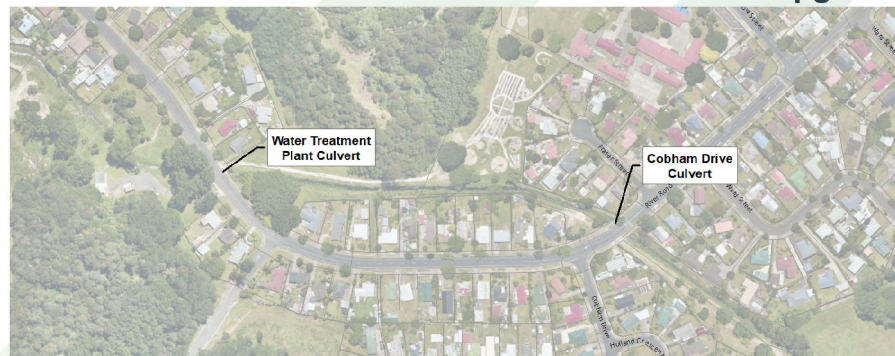
### River Road Culvert Replacements delayed

Last issue Council advised that the River Road culvert replacement project would start this week. However, the project will now start in October. The project will see two culverts where the "overflow stream" crosses under River Road replaced. The downstream culvert is by Cobham Drive and the upstream one is at the entrance to the water plant pumphouse.

This work is needed because the existing culverts are multiple pipe structures and are too small in heavy rainfall events. After heavy rain the weed coming down the stream catches on the walls separating the culverts and restricts water flow, which has caused flooding in upstream properties.

Both culverts will be replaced by larger structures. The culvert at the Water Treatment plant will have three times the existing capacity with a single 3.5m wide and 2m high box culvert. At the Cobham Drive culvert, the two small box culverts on one side will be replaced by a larger culvert that is 3.5m wide and 1.5m high. During construction, River Road will be shut to traffic while the new culverts are installed. This will mean the work can be done faster and at less costs than if a traffic lane was kept open.

### River Road Culvert Upgrade



Culverts at Cobham Drive. Stream weeds, such as growing on the left of the image, catches on the dividing wall and blocks the culvert pipes.

## Kawerau Container Terminal a step closer

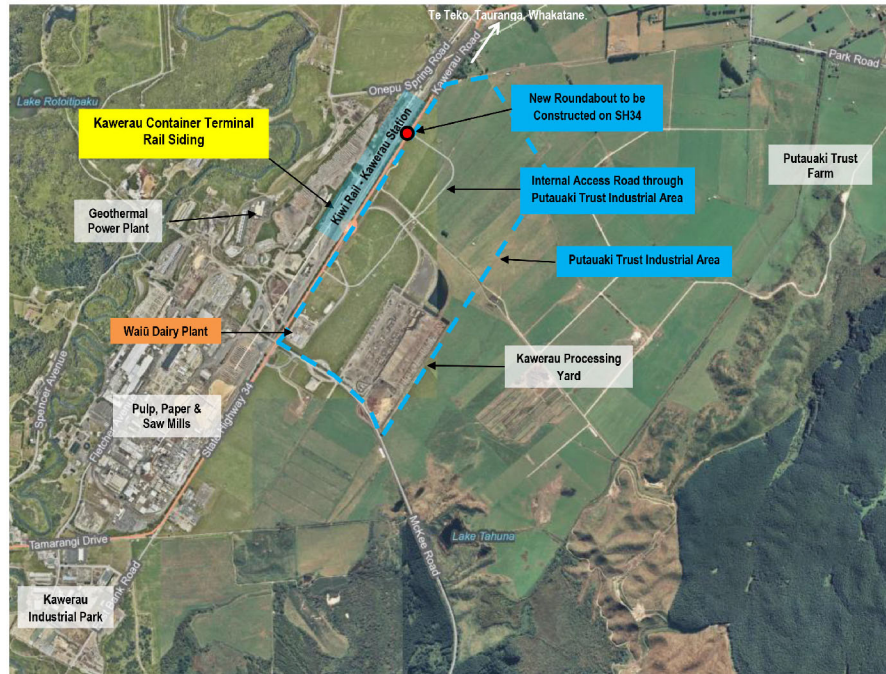
Another milestone towards the construction of the Kawerau Container Terminal was achieved with the completion of the 'Heads of Agreement' that relates to the land area where the terminal will be located. The Kawerau Container Terminal will provide an efficient rail link to transport goods and connect heavy industry in the Eastern Bay to global markets.

The project focus has now moved to the detailed design phase to ensure the most efficient design of the terminal.

Kawerau Container Terminal spokesperson David Turner (also Sequel Lumber Chief Executive) said they were now completing best-practice modelling. The design phase will continue in 2020 with the goal to start construction in 2021. David and the Kawerau Container Team are committed to delivering the project and appreciate the support the community has for the development.

The project team are also planning to offer interim services at a temporary location in 2021. The aerial view shows the location of the Kawerau Container Terminal in relation to existing industry.

In addition, site works have now started for the roundabout which is stage two of the Putauaki Trust Industrial Development roading extension.



## Message from the Kawerau Police

COVID-19 has become the new normal. Eradication may no longer be achievable and the way we go about our daily lives will never be how it once was.

This impact will be felt throughout the community with crime a natural result as whānau struggle to make ends meet and tempers fray. Kawerau recorded 112 occurrences for the previous month. Of these, 42 or 38% were family harm related.

Police make every effort to offer families assistance when we attend and our partner agencies can offer further support, advice and assistance such as parenting, protection orders and budgeting assistance.

Traffic work has been a focus with licence suspensions issued for excess demerit points, speed and drink driving detected with the appropriate action taken.

Meanwhile, for one week each month wastewater testing is carried out to provide an accurate representation of drug use. Drugs are one of the main drivers of crime and this gives a snapshot of national drug use. In the Eastern Bay, testing is carried out in Whakatane, Kawerau and Opoiki. From this information, estimates of the money being generated from drugs across New Zealand for that one week vary but are commonly over \$10m.

That is money being spent to feed a habit, not a family. COVID-19 is not impacting our community - methamphetamine is.

On a brighter note, Police recently played a game of basketball at Tarawera High School against the students and teachers to christen the new court (pictured). This year the overall trophy was won by the school.



Dial 111 in an emergency

Dial 105 to report an incident, theft

\*555 to report speeding, traffic incident



## Welcome to Council

A new team member joined the Customer Services Officers recently and you will see Fiona Pipkin who works at Council every Thursday and Friday. Born and raised in Ireland, Fiona met her husband Travis when they were both travelling overseas. The decision to start a family bought them back to New Zealand and after nearly seven years in Invercargill, they moved to the Bay of Plenty to be closer to family.

Three years ago, Fiona, Travis and their son Alex moved to Kawerau and loved it so much they bought a home here. The family has since expanded with identical twin girls Lily and Sophie who are two.

The young family enjoy the outdoors and especially love the pools, parks, reserves and playgrounds in Kawerau.

Fiona has formerly worked in accounts where customer interactions have been a big part of her role. She is enjoying the team environment and looks forward to helping residents and ratepayers



## Library News

### Kawerau Trapping and Trap Building Workshop

A new date has been set for the Kawerau Trapping and Trap Building Workshop. It will now take place on from **10am until 12.30pm on Tuesday, 29 September at the Kawerau Library.**

### Wendy's Digital Classroom

Wendy Montrose is the Council's Library Adult Programmes Officer and during the next few issues will answer some basic questions about computers and the internet:

The Internet is an increasingly important part of everyday life for people everywhere worldwide. But, if you've never used the Internet or even a computer before, all of this new information can be confusing or even a bit frightening at first. A good way to start feeling comfortable in front of a computer is to understand the basics and what they do.

### Lesson 1.

#### What is a computer?

A computer is an electronic device that manipulates information, or data. It has the ability to store, retrieve, and process data. You may already know that you can use a computer to type documents, send email, play

games, and browse the Web - but they do so much more. When you withdraw cash from an ATM, scan groceries at the supermarket or use a calculator, you're using a type of computer.

#### Hardware vs software

All computers have two things in common: hardware and software. **Hardware** is any physical part of a computer that you are 'able to touch'. Like the computer monitor used for viewing, all the internal parts, the keyboard and the mouse. A printer and speakers are also hardware.



Basic parts of a Computer

**Software** is any set of instructions that tells the hardware what to do and how to do it.

Everything you do on your computer will rely on both hardware and software. As you learn about different types of computers, you'll see differences in their hardware and you'll notice that different computers often use different types of software.

**Next lesson: Types of computers.**



## Contact Council regarding building exemptions

Changes to building exemptions came into **effect on 1 September 2020.**

Council recommends anyone wishing to undertake exempt building work, should first check the guidance from the Ministry of Business, Innovation and Employment on their website [www.building.govt.nz](http://www.building.govt.nz) or the Council's website.

Council advises:

- Exempt work must still meet the requirements of the District Plan
- Exempt building work must meet the Building Code and any other relevant legislation
- Check for requirements for the exempt work to be completed by a suitably qualified person (i.e., licensed plumber, drainlayer, licensed building practitioner or engineer, etc.)
- Check with your insurer

If you are considering carrying out exempt building work – please contact the Council building team on **07 306 9009.**



Manual contact tracing booklets are now available at the Council Office, District Library and i-SITE.

### Porritt Glade Lifestyle Village

Stage two of the Porritt Glade Lifestyle Village is now underway with plans about to be lodged for consent. To view the building plans and for more information please visit [www.kaweraudc.govt.nz](http://www.kaweraudc.govt.nz) or contact Council on 07 306 9009.

### Prince and Princess Mountain Race training

COVID-19 has caused uncertainty with many events and the 65th King of the Mountain Race, Prince and Princess and the school events planned for **Saturday, 31 October** are among those. Please note: **At Level 2, training on the Prince and Princess of the Mountain course has been suspended until the end of September.**

### Unchlorinated Water Taps

Reminder: Unchlorinated water outlets are available for the public at the River Road pumphouse and New World carpark. In August, the total daily usage was approximately 1250 litres per day which is similar to usage figures from August 2019.

### Maurie Kjar Memorial Swimming Pool Complex

The swimming pool complex is warming up after the temporary repair of the steam pipe that feeds the heat exchanger of the main pool. Our Customer Services team are now making contact with schools and groups to confirm the summer booking schedule.

**The annual maintenance shut of the pool complex will be from Monday, 12 October through to Monday, 26 October (Labour Day). Weather permitting the pool will reopen on Tuesday, 27 October.**

Council appreciates there is never a good time to close our popular pool complex. However, the annual shut entails a lot of painting which needs fine warm weather. This year the shut will start right after the Term 3 school holidays. The replacement of the steam pipe line will also be carried out during this time.

### Funding from Horizon Trust

Council would like to acknowledge the funding received from Horizon Trust (formerly the Eastern Bay Energy Trust) to replace outdoor lighting at the BMX park, Marae and parking areas which will be installed in September and October.

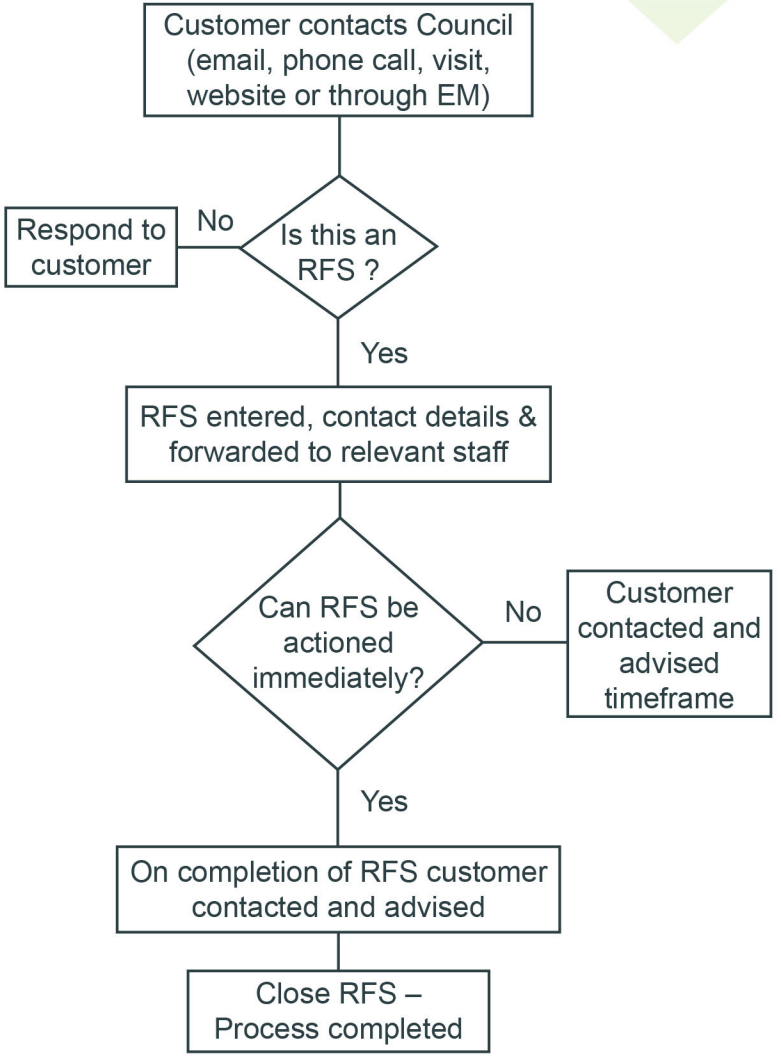
### Community Grant applications

Applications for the Kawerau Community Grants closed on Wednesday. More than 10 applications were received which will be considered at the committee meeting on **22 September** after which applicants will be contacted.

### Request for Service process

Council operates a Request for Service process to ensure that issues and problems raised by the public are logged and actioned. The following process is what happens after Council is contacted by the public.

#### Process for dealing with requests for service (RFS)



### IMPORTANT DATES

10am	19 September	Trees for Babies Ceremony
9am	29 September	Council Meeting and Kawerau Community Awards
10am		Kawerau Trapping & Trap Building Workshop
	12 October	Swimming Pool Close
9am	13 October	Regulatory and Services Council Meeting
9am	27 October	Swimming Pool Re-open
9am	10 November	Regulatory and Services Audit and Risk
1pm	17 November	Council Meeting
9am	24 November	Regulatory and Services and Council Meeting
9am	15 December	