

COMMUNITY UPDATE

16 October 2020



▶ Message from the Mayor

It is good to see the progress of projects after the lockdown periods with COVID-19 earlier this year.

The River Road Culvert replacement project is an important one to protect homes and we are pleased work is about to start. We appreciate the inconvenience to residents in these areas and our teams are working hard to ensure disruption is kept to a minimum.

The other project that has been progressing is stage one of the town centre redevelopment. We are pleased to hear the positive feedback about the new concrete surface. Seating and a bike stand and gardens will be the finishing touches to highlight this much safer walkway.

Work is also starting on the changing room upgrade for the swimming clubs at the Maurie Kjar Memorial Swimming Pool complex.

The speed humps that have been installed around the district were raised at our recent Regulatory and Services' meeting public forum. These have been installed after requests from residents in these areas to help reduce the speed of traffic and make these areas safer for all road users.

The introduction of infringements is another focus to make the district safer in terms of parking and vehicle road worthiness. Council staff have already noticed a positive change in behaviour with parking in the town centre after issuing warning notices during October. Council is now heading into the Long Term Planning process and looks forward to engaging with you to look towards the future.

- Mayor Malcolm Campbell

River Road Culverts

The River Road Culvert replacement project will start after a karakia and blessing of the work site next Monday, 20 October. The downstream culvert at Cobham Drive will be worked on first which means that River Road will be closed from 252 and 254 River Road until Thursday, 3 December.

Bus students who live around the Cobham Drive and Ward Street area in Kawerau will either need to make their way to the River Road Dairy or Kawerau Life Konnect (the former Kawerau Intermediate School) during the first of the two closures for pickup. The school bus pickup times remain unchanged.

The project will replace the existing culverts with much larger structures to reduce the likelihood of flooding of upstream properties after heavy rainfall.

Work will start on the upstream culvert by the Water Treatment Plant on 11 January.

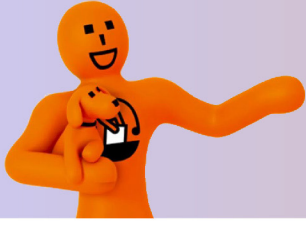
Council apologises for the inconvenience to residents.

▶ Infringements

On Monday, 2 November the infringement process for parking, vehicles and freedom camping will come into effect in the Kawerau District. The Council has been issuing warning tickets during October and have noted a positive change in behaviour, particularly with parking in the township.

The aim is to ensure that Kawerau becomes a safer place – with safer access for pedestrians and those people with disabilities in terms of the parking infringements.

Introducing infringements for vehicles without current Warrant of Fitness (WOF) or Certificate of Fitness (COF) is also a safety measure to ensure these vehicles have passed vehicle safety inspections. Fines can be paid online, by phone or at the Council Offices. The full schedule of infringements is on the Council website kaweraudc.govt.nz



Nau mai, welcome to the 2020 General Election

vote.nz

Stage 1 Town Centre Development Concept

A fresh new look is unfolding with stage one of the Town Centre Development. The new concrete surface, which has a 'broom finish' to prevent it being slippery when wet, is looking good and receiving positive feedback. As the concept shows, the next stage is the installation of gardens by the Parks and Recreation team. After the stunning spring tulip displays the district has enjoyed to welcome Spring – we are looking forward to the end result. There will also be the addition of a bike stand (below) outside the library and concrete cube seating which will be dotted throughout the area as shown. These dual-purpose concrete cubes will ensure there is no vehicle access and can serve as innovative seating options. An emergency exit ramp from the library will also be installed.



- 500 x 500 x 500mm Concrete Bollard (x7)
- Future 500 x 500 x 500mm Bollard (ordered) (x10)
- Steel Bollard (removable) (x4)
- 🚲 Bike Stand
- 🚪 Fire Exit Ramp



Special place for donated Pohutukawa

Light rain on Monday signaled go for a mission to plant a special Pohutukawa Tree. The potted tree had been kindly donated by a Kawerau resident as the tree had become too big for their property. After some time to acclimatise in the nursery, the Parks and Recreation team searched for the perfect spot in the district to plant it. The team agreed the tree would flourish in Stoneham Walk right beside the Ruruanga Stream and that's where AJ Tipiwai, Leith Roberts and Georgia Poole (pictured) planted it. A huge thank you to the resident who donated the tree – which is also going to have a ring of large stones placed around it to protect and further define it.



 Voting open until 7pm on Saturday, 17 October

There has been a steady stream of voters taking advantage of being able to vote early in the 2020 General Election. Voting is available at the Kawerau Concert Chambers on Friday until 2pm and on Saturday from 9am until 7pm.

Pool Shut underway

The annual maintenance shut of the Maurie Kjar Memorial Swimming Pool Complex began after closing on Sunday, 11 October.

The pools were drained and work started on Monday after safety fencing was erected around the main pool. Although the weather didn't allow the pools to be painted on Tuesday, work began on repairing and replacing the tiles around the spa pool. There is a full programme of work being undertaken to keep this amazing community asset in perfect condition.

Unfortunately, as this maintenance wasn't deemed essential – none of the work was able to be done during the first COVID-19 lockdown when the pool complex was closed to the public. Council apologises for the inconvenience.



Library News

Popular Trapping Workshop

The Trapping and Trap Building Workshop at the library in late September attracted a good crowd and will immediately help to make a dent in the local rat population. The Department of Conservation Community Ranger Teresa McCauley and her team explained the role backyard trapping plays in the bid to achieve a Predator Free New Zealand by 2050. People learnt the importance of our unique wildlife as only they have the ability to maintain our native forests through pollination and seed dispersal and how predators like rats, stoats, weasels and ferrets have severely depleted their numbers.

The sound of hammering filled the library as people made their own traps to take home and start catching rats.

Teresa advised people they can bait the traps with peanut butter, chocolate or even Nutella. Also, rats like variety so give them something new now and again. All catches can be logged on the [trap.nz](https://www.trap.nz) app DOC's Clint Savage with Hohepa, Manu and Te Puru showing off their traps.



Pūtauaki Trust Roundabout

Work is progressing well on roundabout being constructed on State Highway 34 by the Pūtauaki Trust.

The project will see a roundabout connecting the internal access road through the Pūtauaki Trust Industrial area. Pūtauaki Trust General Manager John O'Brien is pictured on site with Waiotahi Contractors who are completing the works and BBO (Bloxam Burnett and Olliver) the civil engineers who are overseeing the project.

Pictured left to right: Andrew Lloyd and Shane Robertson from Waiotahi Contractors, Ivan Kottaiya of BBO, John O'Brien Putauaki Trust General Manager and Henry Niemand of BBO.





Protect yourself and others
from COVID-19

For more info visit [covid19.govt.nz](https://www.covid19.govt.nz)

Kawerau

is at Alert

LEVEL 1

Unite
against
COVID-19

Recycling team keen to sort out recyclables

Council's Recycling Team wish to remind residents that if your recycling crate is not emptied it is because there are items in it which are not recyclable.

Only number 1 and 2 plastics are collected. This includes milk bottles, water and soft drink bottles, laundry detergents, shampoo bottles and cooking oil (for example). The team also wishes to remind residents that unhygienic items such as soiled nappies will not be collected from the recycling crates. These should be put in to your general rubbish bin. Peter and the team appeal to residents to please put nappies, any broken glass, and any other plastic items that are not 1 and 2 into the general waste bins. Glass bottles can be put in a neat box beside the recycling crate or into the crate. Large 44 gallon drums are not acceptable. Cardboard boxes need to be broken down, folded and placed neatly inside the recycling crate or underneath the crate. Finally, the team wishes to remind residents that large 44 gallon drums filled with bottles are too heavy to be collected by the recycling runner.

The Recycling Team are finding that there are more items to sort at the kerbside which is taking longer each week. In addition, one area of the Transfer Station has sustained damage to the roof where cardboard is usually stored. This means that the Recycling Team are having to separate the cardboard on the roadside.

Please help our team to do their jobs safely by sorting your recycling and being considerate about what the amount of bottles you are expecting them to collect.



Recycling Supervisor Peter Robertson and Recycling Runner Ben Satherley.

King of the Mountain Race

Residents are invited to head into the Kawerau i-SITE and take advantage of discounted entry fees to enter the 65th King of the Mountain race this year. Council would like to thank Māori Investments Limited and Ngā Maunga Kaitiaki Trust for the approval to proceed and for land access. The Kawerau King of the Mountain race is approximately a 7 km up and down return trip of Pūtauaki (Mt. Edgecumbe) and arguably the toughest mountain race in Australasia. Race day is set for Saturday 31 October and will only proceed if the region is at COVID-19 Alert Level 1.

The Prince and Princess training continues each Wednesday leading up to the race and the first session attracted some 20 young runners. To take part in the weekly Prince and Princess training please meet at Firmin Lodge at 4.00pm for a 4.30pm start.

If you are looking to train outside of official training, please obtain a permit from Māori Investments Limited. You will need a minimum of three in a training party and carry cell phones.

The historic King of the Mountain Race takes place on **Saturday, 31 October 2020** starting with the School Relays at 8:30am; Prince and Princess Race at 11.00am and the main race at noon. Prize Giving 3.30 pm.

Please check the Kawerau King of the Mountain website for more information and to enter.



Enter Prince
and Princess here



Funding available for arts

Applications are now open for grants through the Creative NZ Communities Scheme.

If you or your club have a project that has an arts focus, will benefit the local community and can be completed within 12 months – check out the application fee.

There is \$18,800 available in the first round of funding for the 2020/21 year.

Visit the Council's website [kaweraudc.govt.nz](https://www.kaweraudc.govt.nz) for more information and an application form.

Applications close at 5:00pm on Thursday, 12 November and will be considered at a meeting the following week.

Kawerau Container Terminal (KCT)

KCT Company Limited has received the first bundle of funding provincial growth funding for the design of the Kawerau Container Terminal. They, along with KiwiRail, are working hard to progress the 800m long rail siding.

Long Term Plan

The Council is preparing for the Long Term Planning process to develop the 2021-2031 plan. The planning kicks off with elected members reviewing the way Council services are managed and delivered to the public. The Council will commence pre-consultation work with the community later this year before the formal consultation in March 2021.