

Kawerau District Council

2025 Local Government Elections

Dale Ofoske, Electoral Officer

28 May 2025



**KAWERAU
DISTRICT COUNCIL**
Te Kaunihera ā rohe o Kawerau
TAONGA O TE WHENUA - TREASURE OF THE LAND

Agenda

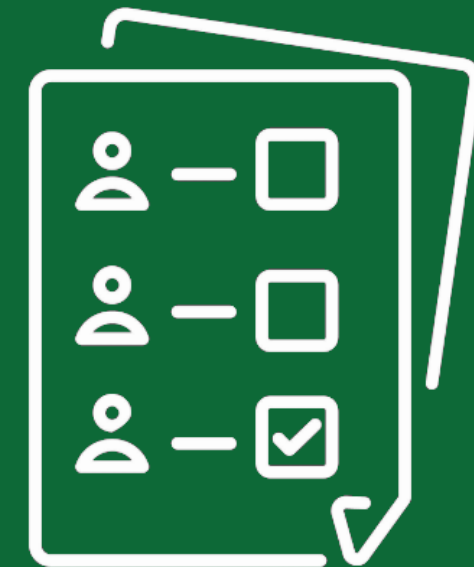
How do I become a candidate?



What do I need to know about campaigning?



How does the voting work?

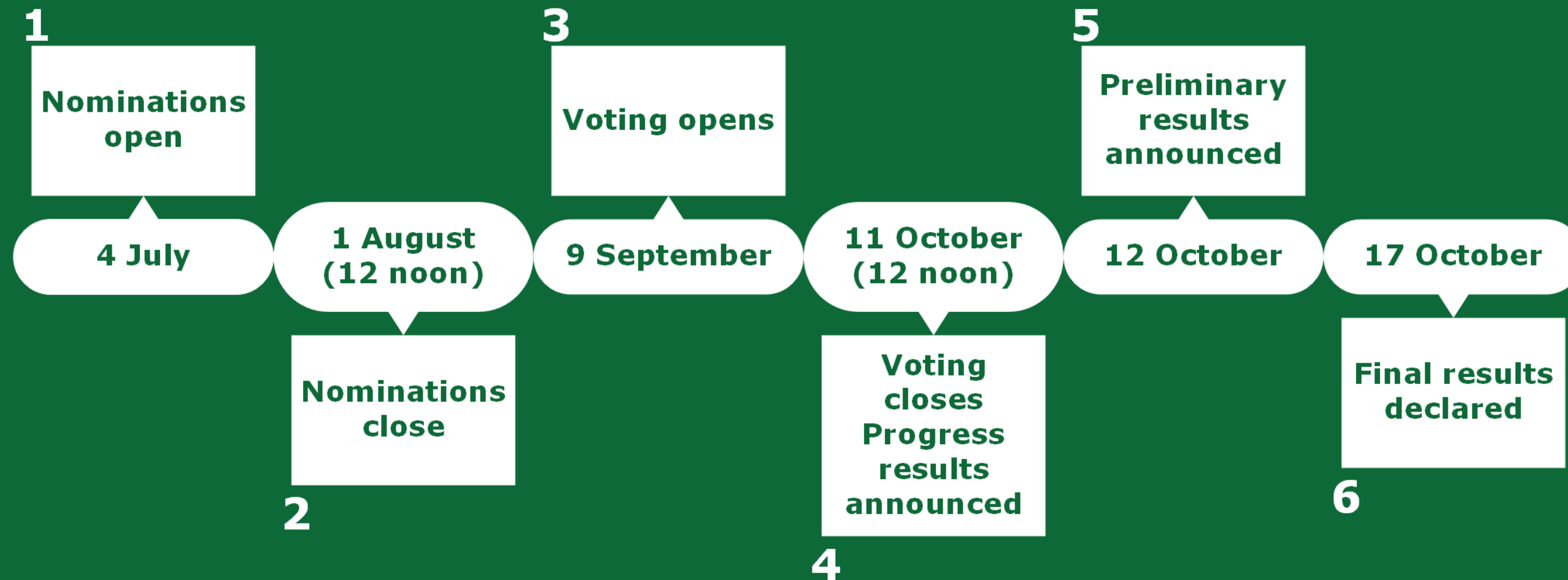


General electoral information

- Kawerau District Council has about 5,200 electors and a population of about 7,600
- Elections held by postal vote on 11 October
- Māori ward introduced 2023
- Māori ward poll required
- Elections for BOPRC
- FPP electoral system used for KDC election, poll and BOPRC election
- Alphabetical order of candidate names



Key election dates



Elections required


- Kawerau District Council
 - mayor
 - elected 'at-large'
- 8 councillors:
 - 'at-large' (2) and
 - Kawerau General Ward (3) or
 - Kawerau Māori Ward (3)
- Bay of Plenty Regional Council members
 - Eastern Bay of Plenty General Constituency (2) or
 - Kōhi Māori Constituency (1)



Elections required

A poll will be held with 2025 elections, with two options:


- Vote to KEEP or REMOVE the Māori ward
- Poll is binding
- Outcome will apply for 2028 and 2031 elections
- Regardless of the outcome of the poll, the Māori ward will be in place for 2025-2028 term



Sample Māori Ward Poll

Tick the circle next to one (1) option you want to vote for.

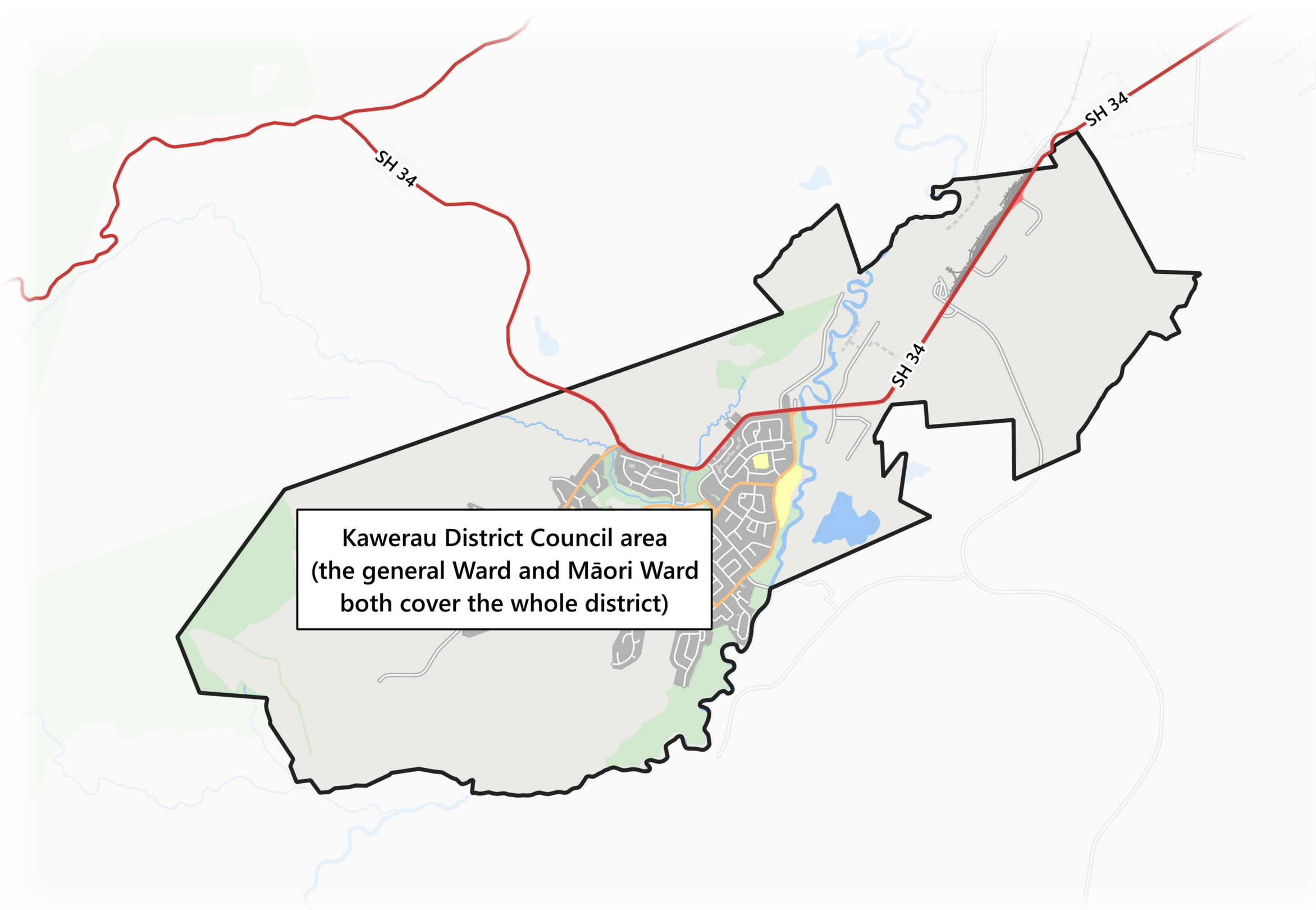
I vote to KEEP the Māori ward 

I vote to REMOVE the Māori ward 





Map



Candidate eligibility

To be a candidate, you must be:

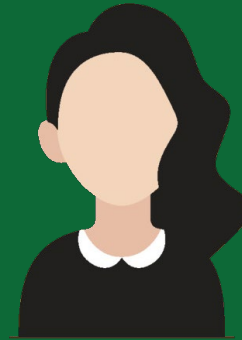
- A NZ Citizen
- 18 or over
- Enrolled on the parliamentary roll in New Zealand
- Nominated by two people from area and roll standing
 - i.e. if you're standing for the Māori ward, your nomination must be signed by two people enrolled on the Māori electoral roll in the Kawerau District Council area



**KAWERAU
DISTRICT COUNCIL**
Te Kaunihera ā rohe o Kawerau
TAONGA O TE WHENUA - TREASURE OF THE LAND

Candidate eligibility

Sophia wants to stand for the Kawerau General Ward



She's a NZ Citizen, and on the electoral roll (anywhere in the country)



Her first nominator, Lucas, is on the general electoral roll in Kawerau



Her second nominator, Mikayla is on the Māori electoral roll in Kawerau



She then asks her dad, Chris to replace Mikayla. He's on the general roll



Candidate eligibility

Can stand for mayor and council

- If elected to both positions, candidates take mayoral (higher) position
- Can't stand for more than one ward
- Can't stand for a ward and an 'at -large' councillor position
- Cannot stand for both KDC and BOPRC
- Elected members (or spouses) cannot have contracts with council over \$25,000 (incl GST) in one financial year
- If a council employee is elected, they must resign
- Can't nominate yourself



**KAWERAU
DISTRICT COUNCIL**
Te Kaunihera ā rohe o Kawerau
TAONGA O TE WHENUA - TREASURE OF THE LAND

Nomination process

- Nominations open Friday 4 July
- Nomination papers available:
 - Online: esp.electionservices.co.nz/lge2025/KW
 - In hardcopy from the Kawerau District Council, 2 Ranfurly Court, Kawerau
 - In PDF format from:
 - www.kaweraudc.govt.nz
 - Email info@electionservices.co.nz
 - Phone: 0800 922 822



Nomination process

Each nomination requires:

- \$200 (including GST) deposit (for each position standing for)
- 150-word candidate profile statement (English, Māori or both)
- Recent passport-size colour photo
- Evidence of NZ citizenship
- Candidates can declare an affiliation
 - Can be group, organisation or independent
 - Unacceptable affiliations (slogan, indecent, slanderous)



**KAWERAU
DISTRICT COUNCIL**
Te Kaunihera ā rohe o Kawerau
TAONGA O TE WHENUA - TREASURE OF THE LAND

Nomination process

Required to include:

- Statement on principal place of residence
 - This automatic and not counted in your 150 words
- List any other positions you're standing for

- Nominations close noon, 1 August
 - Sharp – don't leave to last minute
 - What if you need to fix an issue? Will you have time?



**KAWERAU
DISTRICT COUNCIL**
Te Kaunihera ā rohe o Kawerau
TAONGA O TE WHENUA - TREASURE OF THE LAND

Electoral roll

Two rolls are compiled:

- Residents (people who live in and enrolled in the Kawerau district)
 - This is the same roll used for general/parliamentary elections
 - NZ citizen or permanent resident aged 18 or over
 - Managed by the Electoral Commission
 - Approx 5,200 people
- Non-resident ratepayers (those that pay rates to the Council but live outside of district)
 - By application only and very small, approx 10



Voter eligibility

If you're on the general electoral roll, you can vote for:

Three general ward
councillors



The mayor



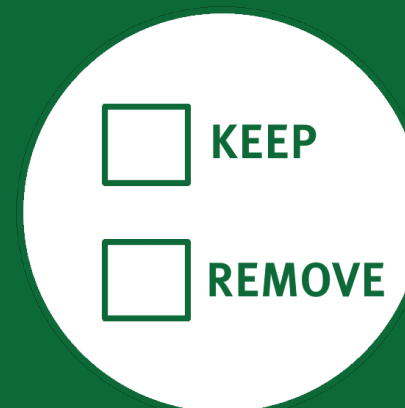
Two 'at-large'
councillors



Two general
regional councillors



The Māori
ward poll



**KAWERAU
DISTRICT COUNCIL**
Te Kaunihera ā rohe o Kawerau
TAONGA O TE WHENUA - TREASURE OF THE LAND

Voter eligibility

If you're on the Māori electoral roll, you can vote for:

Three Māori ward
councillors



The mayor



Two 'at-large'
councillors



One Māori
regional councillor



The Māori
ward poll



**KAWERAU
DISTRICT COUNCIL**
Te Kaunihera ā rohe o Kawerau
TAONGA O TE WHENUA - TREASURE OF THE LAND

Campaigning

- Campaigning can occur anytime (from now)
- Council has an election signs policy
 - Signs can go up 2 months before election day (11 August 2025)
 - Must remove them by midnight on 10 October 2025
 - Good idea to read the full policy at www.kaweraudc.govt.nz
- All election advertisements must show contact details of authorising person
 - Signs, notices, pamphlets, webpages, vehicles etc
 - Excludes posts, tweets, messages- just put it once on your main page



Campaigning

Social media great way to campaign

- Instant, far -reaching, free
- Promote yourself and policies - state policies, run polls, encourage people to vote, key dates etc
- Fake news not acceptable

Council's media channels off-limits

- Must be politically neutral, monitored

Cyber-security – keep safe

- Computers can be hacked
- Be mindful of election offences



**KAWERAU
DISTRICT COUNCIL**
Te Kaunihera ā rohe o Kawerau
TAONGA O TE WHENUA - TREASURE OF THE LAND

Donations

Yes, you can receive donations to spend on your campaign, noting:

- All donations must be recorded and declared after the election
- How much and who it came from, unless 'anonymous'
- 'Anonymous' donation can't be over \$1,500
- There's no limit on donations but there is a limit of how much you can spend



Campaign spend

How much can you spend on your campaign? Depends on which position you stand for

Position	Population	Expenditure limit
Councillor – general ward	4,350	\$3,500
Councillor – Māori ward	3,320	\$3,500
Councillor – ‘at large’	7,670	\$7,000
Mayor	7,670	\$7,000

If you stand for mayor and council, the limit is \$7,000 (you can't add them together)



Campaign spend

- Expenditure limits include GST
- Can't add limits together if campaigning for multiple seats
- Electoral expenses and donations return required by 11 December (enforced)
- Completed forms available for public inspection (7 years)
- Care to ensure accurate (declaration)



Results

- Progress results on election day afternoon (est 90% votes)
- All candidates contacted, media advised
- Preliminary results on Sunday (includes all votes counted except special votes)
- All results available on Council website
- Final results expected by Friday 17 October
- Take office day after public notice (18 October)
- Can act after sworn in at first meeting



**KAWERAU
DISTRICT COUNCIL**
Te Kaunihera ā rohe o Kawerau
TAONGA O TE WHENUA - TREASURE OF THE LAND

Resources

- Candidate Information Handbook
- Electoral legislation
 - Local Electoral Act 2001
 - Local Electoral Regulations 2001
 - www.legislation.govt.nz
- Attend a council meeting
- Read agendas and minutes available online
- Talk to a council staff member



Contact us

Electoral Officer

Dale Ofsoke

Independent Election Services

Ground Floor, 167 Victoria Street West, Auckland (entrance off Dock Street)

Phone: 0800 922 822

Email: dale.ofsoke@electionservices.co.nz

Deputy Electoral Officer

Tania Humberstone

Kawerau District Council, 2 Ranfurly Court, Kawerau

Phone: 07 306 9009

Email: tania.humberstone@kaweraudc.govt.nz



**KAWERAU
DISTRICT COUNCIL**

Te Kaunihera ā rohe o Kawerau

TAONGA O TE WHENUA - TREASURE OF THE LAND

Kawerau District Council

2025 Local Government Elections

Dale Ofsoke, Electoral Officer

28 May 2025



**KAWERAU
DISTRICT COUNCIL**
Te Kaunihera ā rohe o Kawerau
TAONGA O TE WHENUA - TREASURE OF THE LAND