

KŌRERO MAI, LET'S TALK WASTE

DRAFT WASTE MANAGEMENT AND MINIMISATION PLAN 2025-2031

Like many towns in Aotearoa, Kawerau still consumes a lot and sends most of it to landfill. In 2023-2024, Kawerau produced more than 4,200 tonnes of non-recoverable waste or rubbish that went to landfill.

Waste is one of the biggest costs for our environment and community, with 16 cents in every rates dollar spent to collect, process or dispose it. Waste will cost the district \$3 million this year, which is set to increase with fuel, transport and levies all rising.

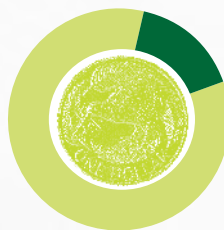
The plan outlines actions to improve the current recycling and greenwaste collections. This can happen with a joint approach by council and the community.



2023-2024

4,281_T

**OF RUBBISH OR REFUSE
SENT TO LANDFILL**



16 CENTS
**OF EVERY RATES
DOLLAR GOES TO
MANAGING WASTE
IN OUR COMMUNITY**

**OUR VISION: TO MOVE TOGETHER TOWARDS
ZERO WASTE AND A CIRCULAR ECONOMY.**

Have your say at kaweraudc.govt.nz
by 20 July 2025



**KAWERAU
DISTRICT COUNCIL**
Te Kaunihera ā rohe o Kawerau

PURPOSE OF UPDATING OUR WASTE MINIMISATION MANAGEMENT PLAN



Achieve further waste reductions in a way that is affordable to the community



Encourage more recycling (recyclables) to decrease the volume of waste going to landfill



Encourage the community to reduce waste, reuse and recycle more and divert waste streams

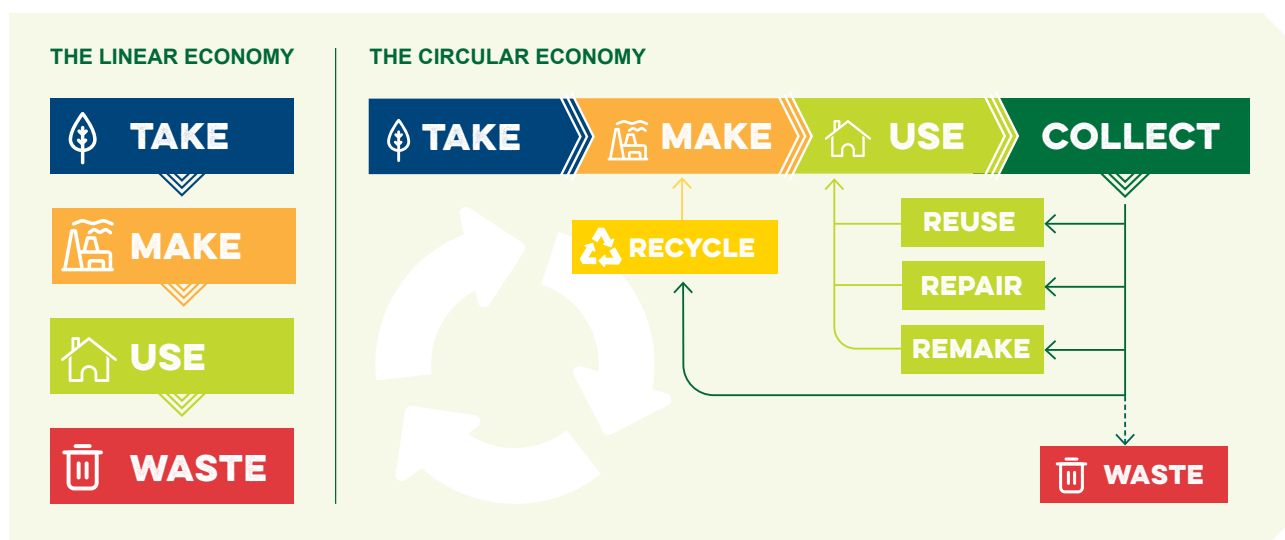


Develop options to remove food waste from the waste to landfill stream



Improve the quality of composted green waste and find a viable reuse option

OUR VISION IS TO MOVE TOGETHER TOWARDS ZERO WASTE AND A CIRCULAR ECONOMY.



WHAT'S THIS RUBBISH?

In the 2023-2024 year, the Kawerau community produced 4,281 tonnes of rubbish or refuse that was transported by truck to the Tirohia Landfill (a 340km return journey). This costs \$300 per tonne to transport and dispose.

Two thirds or 2,627 tonnes of this non-recoverable waste was dropped directly to the Kawerau Transfer Station. The remaining third, or 1,654 tonnes was from kerbside collections.

The cost to the environment and to the community at more than \$3m each year, means we need to take stock and decrease the amount

of rubbish we each produce, and try to increase how much we reuse and recycle.

Reducing the volume of non-recoverable waste, or residual refuse, will require a few different actions and areas that Council will focus on for the duration of this Waste Management and Minimisation Plan from 2025 to 2031.

This draft plan updates the previously adopted Waste Management and Minimisation Plan in 2012, due for review in 2018, but delayed until 2025/2026.

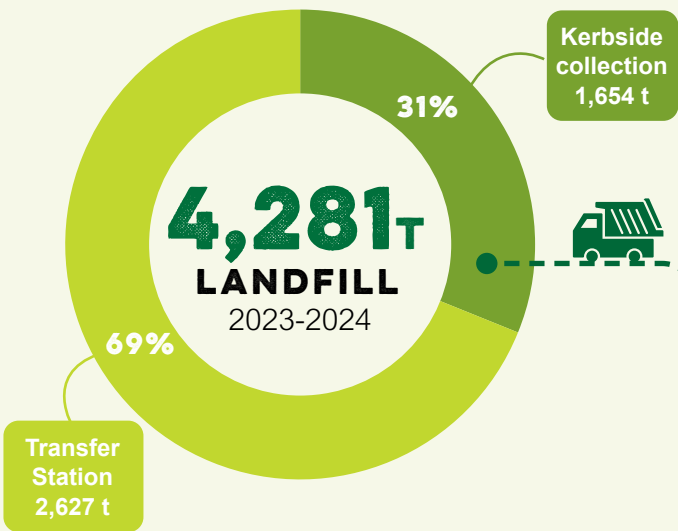
WHAT'S THE SITUATION WITH WASTE IN KAWERAU?

IN 2023-2024:

Kawerau produced 4,281 tonnes of non-recoverable waste that ended up in the landfill. This comprised...

 **179KG WASTE TO LANDFILL PER PERSON IN KAWERAU**

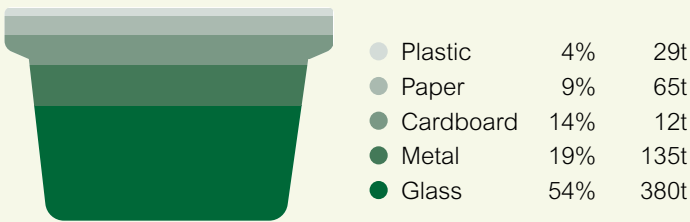
(110kg Christchurch, 160kg Auckland, 182kg Hamilton)




WHAT WE SENT TO THE LANDFILL FROM KERBSIDE WASTE COLLECTIONS*



 **621t OF RECYCLING MATERIAL DIVERTED FROM THE LANDFILL**



 **86KG PER PERSON WAS RECYCLED IN KAWERAU**

816t CONCRETE CRUSHED AND SOLD to Council customers

 **650t SOIL RECEIVED AND REUSED** (demand outstrips supply)

 **1,000m² GREENWASTE** collected and composted

WHY DO WE NEED TO FOCUS ON SOLID WASTE?

Solid waste collections, processing and disposal costs the Kawerau community \$3 million each year. It is Council's biggest operational cost.

Rates are the main funding source of solid waste, with some of the government levies returned to council to support waste minimisation initiatives.

The drivers for these increasing costs, which in April and May cost \$100,000 each month include:

- The amount of non-recoverable solid waste that ends up in the landfill
- Rising fuel costs (it's a 340km round trip from Kawerau to the Tirohia Landfill)
- Increasing landfill disposal levies currently \$60 per tonne. On 1 July 2025 this goes up to \$65 per tonne, and on 1 July 2026 goes up to \$70 per tonne
- Increasing pressure on Councils and communities to do better by the environment

WHERE WE'RE WORKING TO IMPROVE

REDUCING WASTE STREAMS – PRODUCT STEWARDSHIPS

Items like tyres, whiteware, electronics and batteries often end up in the landfill as non-recoverable items. The government and various manufacturers are partnering to provide product stewardships, where products that would formerly go to the landfill, are recycled into their original form again, or used to make new products.

Council is now working to connect with various stewardship programmes.

The first of which is Tyrewise, where people can drop up to five tyres at the Transfer Station, and these are collected and reused for other products.

This Waste Minimisation Management Plan is an opportunity to reassess how we are producing, collecting and disposing of all types of solid waste in the district.

TRANSFER STATION UPGRADES

Council is looking to improve the Transfer Station to provide better areas for people to drop off sorted items for recycling.

Importantly, Council plans to remove all charges for dropping sorted recyclable items like plastic, paper, mixed glass, tins and aluminium to the Transfer Station.

The aim is to make it easier for our community.

There will be a charge for some items, such as whiteware like fridges, freezers and air conditioning units – as the removal of the Fluorine-Gases or F-Gases must be completed before the item is recycled. This process was confirmed in June 2025 with a minimal charge of \$47 per item for a local contractor to remove the F-Gases.

The F-Gases must be removed and Council is responsible for ensuring this happens, and must



report on it to the Environmental Protection Agency. Then the metal recyclers will collect the item, with certainty that it will not be leaking any harmful greenhouse gases.

From 1 July 2025, the charges for waste dropped to the Transfer Station will be based on weight. Fees and charges are available online at kaweraudc.govt.nz.

EDUCATION OF THE NEXT GENERATION

Education about reducing waste and recycling is another area that Council wants to improve. We will continue to support the Paper 4 Trees programme for our schools, kura and kohanga reo – which rewards paper and cardboard recycling with native plants and trees. This programme will be expanded with educational programmes delivered to the classroom by the Environmental Education for Resource Sustainability Trust. More info can be found eerst.co.nz

COMMUNITY EDUCATION

Council wants to work with the community to increase knowledge about what can be recycled and reused. This includes notices being provided at the kerbside if contamination is found in the recycling or greenwaste.

KERBSIDE IMPROVEMENTS – GLASS RECYCLING

One of the issues has been no buyers for mixed colour glass collected at the kerbside. This is set to change, with a new agreement and market opening up for mixed colour glass collected in Kawerau.

Soon, all the mixed glass bottles and jars (mixed means different colours) collected kerbside or dropped to the Transfer Station can be trucked and sold to Visy in Auckland.

Council can sell the mixed glass for \$30 a tonne. If it was sorted glass, income could be around \$70 per tonne, but current processes, equipment and staffing do not allow this. Even with the transport costs at \$66 per tonne (and therefore a loss of some \$36 per tonne) this is a far cheaper option than trucking glass to the Tirohia Landfill at \$300 per tonne for transport and disposal.

Council will continue to assess the best options for the future, but in the meantime, collecting and selling the mixed glass bottles and jars (of all colours) means we divert a large percentage of waste back into the product life cycle. And this reduces volumes sent to the landfill – which decreases costs and most importantly, means the glass resource can be reused.

GREENWASTE – IMPROVE THE QUALITY OF COMPOSTED GREENWASTE

Each year approximately 1,000 cubic metres of greenwaste is collected and received from the district, and from the community dropping it directly to the Transfer Station.

The majority of greenwaste is dropped directly to the Transfer Station (for a fee) with only about one quarter from the fortnightly greenwaste kerbside collection of 240 litre bins.

This greenwaste is stockpiled on Council land at the Rapid Infiltration Basins (RIBs) for composting and mulching.

The amount of contamination within the greenwaste is a huge problem.

This comes mainly from kerbside collections in the 240 litre greenwaste bins. The contamination includes plastic bottles, bags and all sorts of general rubbish. Removing this contamination means extra cost and resourcing.

The contamination also means that the product quality of the greenwaste once it has been screened and composted is too low to be sold to the public or commercial customers.

This is a missed opportunity, and Council wants to work on actions to decontaminate the greenwaste. One of these actions is education within the community.

WHAT NOW?

This plan relies on a combined approach, the council and community. Your feedback and voice is important.

There are various ways you can provide feedback for the Council to consider in its decision making:

- **Go online** to: www.kaweraudc.govt.nz
- **Post** your submission or feedback to Kawerau District Council: Chief Executive Officer, Kawerau District Council, Private Bag 1004, Kawerau 3169
- **Drop off** a submission or feedback to the Council Offices, isite or District Library
- **Email us** at submissions@kaweraudc.govt.nz with the subject line 'Waste'
- **Direct message** us on Facebook @KawerauDistrictCouncil
- **Phone** us on 07 323 9009
- Talk to us at one of our **community events** – keep an eye out on Kawerau District Council channels for event information.

You are welcome to also share your views in any way that suits you.

TIMEFRAME

19 June	Consultation and engagement begins with the community
	Submissions open
3 July	Drop-In Session at Kawerau Markets 10am to 12noon
15 July	Drop-In Session at Rangi Delamere Centre 2pm to 3pm
16 July	Public Meeting at Rangi Delamere Centre 10am to 11.30am
17 July	Drop-in session at Kawerau Markets, Circus Paddock 10am to 12noon
20 July	Closing date for submissions and feedback
30 July	Submitters have opportunity to present feedback to Council
27 August	Council Meeting to adopt the Waste Management and Minimisation Plan

WASTE SURVEY AND SUBMISSION



NOTE: As part of the consultation process, Council must make all submissions available for public inspection.

.....
Name

.....
Organisation (if applicable)

.....
Postal address

.....
Telephone

.....
Email

.....
Signature



scan to make an online
submission

☐ Tick if you are a Kawerau resident. ☐ Tick if you wish to speak in support of your submission at the Hearing on 30 July 2025.

QUESTIONS FOR THE RESIDENTIAL COMMUNITY

YOUR HOUSEHOLD

How many people in your household?

- ☐ Just myself
- ☐ 2
- ☐ 3
- ☐ 4
- ☐ 5
- ☐ Other (please specify) _____

The Draft Waste Management and Minimisation Plan is looking at ways to reduce waste, increase recycling or reusing and minimise harm and impact. What do you think of this direction?

- ☐ Strongly disagree
- ☐ Disagree
- ☐ Neutral
- ☐ Agree
- ☐ Strongly agree

What is most important to you and your household?

- ☐ Future proofing the environment for many generations to come
- ☐ Cost – buying affordable products
- ☐ Costs to the community – reducing disposal costs by recycling and reusing goods
- ☐ Being good Kaitiaki | stewards for the environment
- ☐ Other (please specify) _____

RECYCLING

Select which items you think can be recycled via kerbside collections.

- ☐ Glass bottles and jars
- ☐ Paper and cardboard
- ☐ Light bulbs
- ☐ Tins and cans
- ☐ Plastic water bottles (number 1 plastic)
- ☐ Milk bottles (number 2 plastic)
- ☐ Pipes (number 3 plastic)
- ☐ Sauce bottles (number 4 plastic)
- ☐ Margarine containers (number 5 plastic)
- ☐ Lids
- ☐ Aerosol cans

Does the 45 litre recycling crate and weekly collection provide enough space for your household recycling?

- ☐ Yes ☐ No

Do you already separate out your glass for kerbside recycling collection?

- ☐ Yes ☐ No

What would help your household to recycle more products?

When you are purchasing products do you consider... Tick all that apply.

- ☐ Price
- ☐ If the packaging is recyclable
- ☐ Other (please specify) _____

Should Council investigate putting in a range of Recycling Bins for public use in high-use areas?

- ☐ Yes - in areas like the Central Business District and the Maurie Kjar Aquatic Centre
- ☐ No
- ☐ Other (please specify) _____

KAWEAU TRANSFER STATION PLANS

If there was no cost to drop recycling to the Kawerau Transfer Station would you sort and drop off your recyclables at the Transfer Station more regularly?

- ☐ Yes ☐ No

Did you know that you can drop off the following items to the Transfer Station? Tick all that apply.

- ☐ Whiteware items – items with Fluorine-Gases (F-Gases) have a fee of \$47 to remove the gas and then dispose of the whiteware product
- ☐ Tyres – residents will soon be able to drop off up to five tyres free of charge via the new Tyrewise stewardship programme
- ☐ Batteries – Would you collect and drop off your batteries (AA, AAA, lithium, power tool).
Note: Car batteries can already be dropped to the transfer station
- ☐ Wood (treated and untreated) for a fee
- ☐ Clean concrete for a fee, and also can be purchased
- ☐ Clean fill and soil for a fee, also can be purchased

GREENWASTE AND FOODWASTE

Do you already compost food waste at home?

- ☐ Yes ☐ No

Do you already compost greenwaste from the garden at home?

- ☐ Yes ☐ No

EDUCATION AND COMMUNICATION

How do you want to receive information from Council about waste and waste minimisation?

- ☐ Social Media – Facebook and Instagram
- ☐ Website
- ☐ Antenno
- ☐ Newsletter – printed and delivered to homes
- ☐ External sources i.e. radio and newspapers
- ☐ Other (please specify) _____

What else could Council do to encourage recycling, and waste minimisation?

Do you support the Paper 4 Trees and Zero Waste Education Programs being provided to our Kawerau schools and preschools as part of the waste minimisation plan education?

- ☐ Yes ☐ No

Council plans to invest in waste minimisation education for our Kawerau community – do you support this?

- ☐ Yes ☐ No

ANY OTHER FEEDBACK

SUBMISSIONS CLOSE 20 JULY 2025

Email: submissions@kaweraudc.govt.nz **Drop off:** Council Office, isite or library.

Post: Chief Executive Officer, Kawerau District Council, Private Bag 1004, Kawerau 3169 www.kaweraudc.govt.nz