

COMMUNITY PĀNUI | UPDATE



21 November 2024

Kawerau Mana Taiohi Wānanga and Code of Ethics Training

Recently Mayors' Taskforce for Jobs and Ara Taiohi partnered together, to hold a Mana Taiohi Wānanga and Code of Ethics Training, in Kawerau. The event brought together people who work with youth and community members, dedicated to the development and well-being of our rangatahi | youth.

The training provided an in-depth introduction to the Mana Taiohi principles and the Code of Ethics for Youth Work. Kawerau District Council sent two staff members, Youth Librarian, Janice and Mayors' Taskforce for Jobs Coordinator Amy Hayes, to learn and become better equipped to deal with rangatahi | youth in their roles. Participants engaged in meaningful discussions and activities designed to enhance their professional and personal development. This training was particularly beneficial for those new to the youth development sector and seasoned practitioners looking to refresh their foundational knowledge.

By fostering a deeper understanding of ethical practices and the Mana Taiohi framework, whose principles are centred

around Te Tiriti o Waitangi, the training has empowered attendees to better support and advocate for the youth in our community.



Above: Youth workers from around Kawerau at the Mana Taiohi Wānanga and Code of Ethics Training.



Important dates and meetings

Monday 18 November

Friday 20 December 5:00pm

Submissions are open for the Proposed Freedom Camping Bylaw

Friday 22 November 5:00pm

Rates due

Wednesday 27 November, 9:00am

Ordinary Council Meeting

Thursday 28 November, 3:00pm

All Council Services Closing for Annual Christmas Function

Wednesday 11 December, 9:00am

Regulatory and Services Meeting

Saturday 14 December

Christmas in Aotearoa Float Parade, Christmas in the Park Community and Evening Concerts

Wednesday 18 December, 9:00am

Ordinary Council Meeting

Tuesday 24 December, 12noon

All Council Services close

Thank you for having your say with

Our Places

Eastern Bay Spatial Plan

During the last month, the Council's in the Eastern Bay of Plenty (Kawerau District, Whakatāne District, Ōpōtiki District and Bay of Plenty Regional Councils) have been working together to plan for the future.

Thank you to everyone who attended the 'drop-in' sessions and facilitated workshops, discussing the Spatial Plan. Thank you also to everyone who had their say.

Next steps:

December 2024:

Presentation to the Governance Group

End of 2024: Collate and review of all feedback

Early 2025:

Finalise draft scenarios and Options Report

Mid-2025:

Release the draft plan for feedback

Late 2025:

Final report adopted by Councils, ready for action!

DORA bus

From Tuesday 29 October – Saturday 2 November the Digital On-Road Access (DORA) bus was outside of the District Library. The purpose of the bus was to help people learn how to use digital health and wellness apps such as Manage My Health, Health365, myindici 2.0, and The Doctors.

DORA was a big success and helped many people in our community learn how to download and use apps to support their wellness and everyday lives.

Kawerau District Library partnered with Digital Inclusion Alliance Aotearoa to make this possible. Thank you to the adult-programmes and activities officer, Sue Gould and the team who provided this opportunity for the community.



Above: Sue Gould, Lyn Flowerday and Disability Support Services Naomi Freeman in front of the DORA bus.

Quay Street Whakatāne Bus Stop Closure

From 2 December

Starting 2 December 2024, the Quay Street bus stop will be closed. Please use the Boon Street bus stop as an alternative.

Impacted Routes: 122, 131, 135, 143, and 147.

The Boon Street bus stop is approximately an 8-minute walk from Quay Street.

Directions to Boon Street:

- Head southeast on Quay Street toward The Strand.
- Walk along The Strand.
Turn left onto Boon Street; the bus stop will be on your left.

This closure supports Whakatāne's Future Proof Project, which includes strengthening flood defences along Quay Street to Muriwai Drive and upgrading the Whakatāne isite building. The project is expected to last around 18 months.

Thank you for your understanding and patience as these improvements are made.



KAWERAU CHRISTMAS IN THE PARK



14
DEC

EVENT TIMETABLE

10am	Christmas parade floats meet at Ron Hardie Recreation Centre
11am	New World Kawerau Santa Parade starts, and completes one lap of town before ending behind the Rec Centre
12pm – 5pm	Radio 1XX Community Christmas Concert Including Prizegiving for Santa Parade
6:30pm – 10pm	Evening variety show and fireworks (if permitted)



New museum exhibition – Our People at Work: Brian Brake and Tasman Mill

In May 1986, renowned photographer Brian Brake took 40 black-and-white portraits of employees from the former Tasman Pulp and Paper Company. Called 'Our People at Work', this was the third in a series of five photo essays commissioned by the publicity department at the mill.

The Sir James Fletcher Kawerau Museum owns 20 of these original exhibition prints, along with the specially made wooden boxes in which they are stored and travelled.

The 20 photos are now on display at the Kawerau District Library and Museum, make sure you go check them out!

Left: Brian Brake Photograph – Ingrid Van Stelten

Property Revaluation

Every three years Council must legally complete revaluations of properties, both residential and commercial. QV completes the rate revaluations independently, for Council.

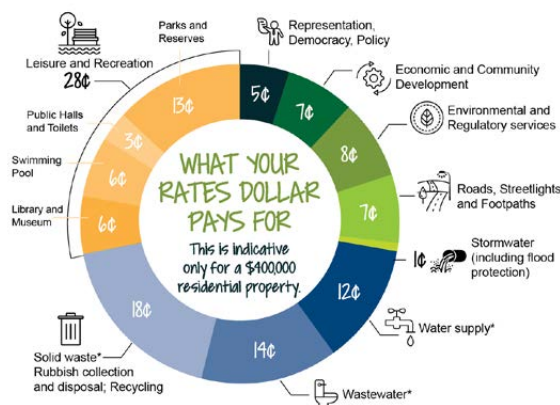
The 2024 revaluation notice will be sent out at the end of November. If you object to the revaluation, you may send Council an objection letter, this must be received by 24 December 2024.

The main indicator of a property's value is its worth on the current real estate market. The value is determined by looking at the selling price of other similar properties in the area. Any property improvements and chattels such as carpets, drapes or light fittings are excluded from the valuation.

Please note, overall Council's budget is determined by the services, projects, and operations it provides to the community. The total rates are the cost of providing these services. The valuation of each property then determines the "slice" of the rates that each property pays towards the overall rating 'pie.'

In the Kawerau District, the industrial, businesses and commercial entities pay 52% of the overall rating 'pie', which means that the 48% remaining is split between the residents, based on the valuation of each property.

For more information, please visit our website kaweraudc.govt.nz



*These rates comprise a uniform annual charge per property and the remainder of this charge is based upon property value.

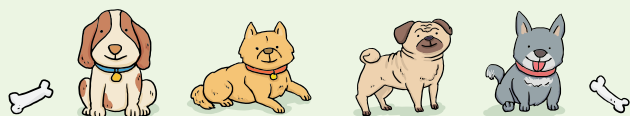
Join Us for K-Town C.A.W (Community Animal Welfare)

Annual Dog Day!

Mark your calendars for Saturday, **30 November 2024**, and bring your furry friends to our Annual Dog Day!

It's the perfect opportunity for your dogs to socialise and for you to learn about essential services like desexing, vaccinations, and microchipping. Don't forget to bring your Community Services card to take advantage of special offers.

See you in front of the main council building from 9am!



Tailor your emergency plan to suit your household

When you are making your household plan, remember to include everyone. Think about the requirements of disabled people, older people, babies, young children, pets, and other animals. It is also a good idea to check in with your neighbours, who may also require assistance if an emergency were to happen.

Find more tips here:

Advice for disabled people — *Get Ready* — *Emergency preparedness in New Zealand*

GET READY

CHRISTMAS IN AOTEAROA

The theme of this year's Christmas Float Parade has been decided – it is Christmas in Aotearoa.

For more information and to enter a float into the parade to be held on 14 December, please contact Council's isite team and register your float, before Friday 6 December.



Congratulations to Rochelle Weedon for winning the Facebook competition, where she chose the theme for the Christmas Float Parade.

RIGHT: Rochelle Weedon receiving her gift voucher from Courtney Cox and Jacqui Roberts



Te Kaunihera ā rohe o Kawerau Kawerau District Council

Christmas and New Year 2024–2025 closures

KAWERAU DISTRICT OFFICE and AA Services

CLOSED 12 noon Tuesday 24 December 2024

CLOSED AA New Zealand Services closed 11am
Tuesday 24 December 2024

RE-OPEN 8am Monday 6 January 2025

TRANSFER STATION

CHANGE OF HOURS

8am – 12 noon Tuesday 24 December 2024

CLOSED Wednesday 25 December 2024

OPEN all other days during the holiday period
12 noon to 4pm.



KERBSIDE REFUSE AND RECYCLING COLLECTIONS

NOTE: Collections scheduled for Wednesday 25 December
(Christmas Day) will be serviced on Saturday 28 December

NOTE: Collections scheduled for Wednesday 1 January
(New Year's Day) will be serviced on Saturday 4 January

Kerbside collections for refuse and recycling on Mondays
and Tuesdays will be collected as usual.

Usual kerbside collections for Wednesday 8 January
onwards collected as usual.

DISTRICT LIBRARY

CLOSED 12 noon Tuesday 24 December 2024

RE-OPEN 10am Monday 6 January 2024



*Please note, Council is closing
the library for the holiday period.*

*Please, plan ahead and ensure you
get all the books you've been wanting to read over
the holiday period, before 12 noon on Tuesday 24*

MAURIE KJAR AQUATIC CENTRE

OPEN Tuesday 24 December 2024 8am – 12 noon

CLOSED Christmas Day (no private hires)

Usual hours resume 26 December 2024 Monday to
Sunday 8am – 6pm

KAWERAU ISITE

OPEN Tuesday 24 December 2024 9am – 12 noon

CLOSED Christmas Day

OPEN 26 December 2024 9am – 1pm

OPEN 27 December 2024 9am – 4pm

OPEN 28 and 29 December 2024 9am – 1pm

OPEN 30 December 2024 9am – 4pm

OPEN 31 December 2024 9am – 1pm

OPEN 1 and 2 January 2025 9am – 1pm

OPEN 3 January 2025 9am – 4pm

OPEN 4 and 5 January 2025 9am – 1pm

**For urgent assistance
outside of Council opening
hours please contact us
24/7 on 07 306 9009**

- Select 1 for Noise and Animal Issues
- Select 2 for Duty Supervisor
(water, refuse, trees etc.)

Contact Council to lodge a non-urgent
request for service



via Antenno



email info@kaweraudc.govt.nz



Website Kaweraudc.govt.nz