

Let's talk about Annual Plan  
Mahere ā Tau 2026/27

# Do you support what is being proposed?

If not, then please tell us what...



Open for  
submissions  
17 April to  
18 May 2026

**Our aim is to deliver the best  
value services to our community**

## Message from the Mayor and Chief Executive

Tēnā tātau katoa | a warm welcome to you all, our community on behalf of Te Kaunihera ā rohe o Kawerau to the proposed Annual Plan Mahere ā Tau 2026-2027.

This is year two of the Mahere Iwa Tau | Long Term Plan 2025-2034, which sets our clear direction for a prosperous and resilient district.

Our focus remains on delivering the best value services to our community. In balancing affordability with essential investment, we are proposing a rates increase of 5.8%.

We continue investing into Three Waters infrastructure. In the coming two financial years, we are scheduled to complete the final stages of our district-wide drinking water pipe replacement programme.

Following robust community support, we kept the in-house delivery of water services as part of the Local Water Done Well reforms. This also requires the gradual nine-year transition to targeted water and wastewater rates, so that those who use these services pay their fair share over time.

Financially, we remain committed to prudent management and sustainability. This year marks the first planned 3% increase in our funding of depreciation for strategic assets, moving us to 100% funding by 2037-38 to protect future generations.

Enabling economic and community growth remains a priority including delivering the residential development at Stoneham Park.

Thank you for your continued engagement as we work together to create a resilient and sustainable Kawerau.



Kahika  
Her Worship the Mayor  
Faylene Tunui




Tumu Whakarae  
Chief Executive  
Morgan Godferly



## What we did in 2025-2026

**A lot has happened, the following are updates of what we said we would do in 2025-2026. There's too much to include everything here. You can find more details in our Annual Reports on our website.**

- ✔ Waste Management and Minimisation Plan approved by Ministry for Environment until 2031
- ✔ Transfer Station upgrades for the collection of sorted recycling diverted 1,725 tonnes from landfill in the six months from 1 July to 31 December 2025
- ✔ A glass recycling contract with Visy saved money and recycled more than 43 tonnes in the six months from 1 July to 31 December 2025
- ✔ Completed Local Government Elections 2025
- ✔ Poll during Local Government Elections approved keeping Kawerau Māori Wards for the 2028 and 2031 elections
- ✔ Shade sails installed at the skate park
- ✔ Focus on roading and footpaths
- ✔ Successful building compliance audit with IANZ
- ✔ Reopening of the Tarawera River walkway
- ✔ Completed planning and consenting to progress residential development at Stoneham Park



# What we are proposing 2026-27

► **Council proposes an overall rates increase of 5.8%\*.**

This falls just outside the rates affordability framework of estimated inflation of 3.1%, plus two percent, but well below last year's increase of 8.5%.

The drivers of the 5.8% rates increase:

- Personnel and government-mandated KiwiSaver % increases (1.9% impact on rates).
- Depreciation expense increases due to value of Council assets rising by \$29.9 million, and the increase in depreciation funding to 68% (2.1% impact on rates)
- Setting up in-house business unit to continue delivering water services and compliance (0.3% impact on rates).
- Rooding costs increases (0.2% impact on rates).
- Financing (loan interest) costs (0.2% impact).
- Audit fee for Long Term Plan (0.7% impact).
- Refuse disposal fee increases (0.2% impact).

\*The weekly increase will vary for each property depending on the value of residential, commercial and industrial properties.

► **Water renewals project:**

By 30 June 2026, Council will have borrowed \$8 million to fund the water pipes renewals via the Local Government Funding Agency (LGFA). Of this total, \$400,000 was invested with LGFA debenture stock. The proposal is to bring forward the next loan of \$2.7m in the coming year 2026-27 year (and keep to the total \$12m planned loan by the end of the water renewal project).

► **Continue the gradual nine-year transition to targeted water and wastewater rates** (as required by legislation).

► **Consider the level of the Uniform Annual General Charge (UAGC)** that every rateable property pays (minimum charge per property). Keep the UAGC at \$900 or reduce to \$850.



Our aim is to deliver the best value services to our community.

**See inside for more detail and what we need your feedback on**

Nau Mai Haere Mai.

Council invites you to attend a public meeting or pop by our 'drop in' sessions to talk to Councillors and staff.

## Key dates

Please check the Council website, social media, and Council pānui for updates and more detailed information.

### Feedback and submissions

17 April to 18 May 2026

### Community Engagement Meetings

13 April, 1pm - 2pm	Public Meeting KADAP, Concert Chamber
22 April, 11am - 12noon	Public Meeting, Rautahi Marae
28 April, 11am - 12noon	Public drop-in session, Rangi Delamere Centre
30 April, 10am - 12noon	Public drop-in session, Kawerau Community Markets
6 May, 5:15pm - 6:15pm	Public Meeting, Concert Chamber
8 May, 2pm - 3pm	Public Meeting Grey Power, Concert Chamber

### Consultation Timeline

15 April 2026	Council adopts the draft Annual Plan 2026/27 consultation document
17 April 2026	Consultation period opens
18 May 2026	Closing date for submissions
3 June 2026	Hearing submitters and deliberations
24 June 2026	Council adopts Annual Plan 2026/27 <ul style="list-style-type: none"> <li>• Setting of Rates 2026/27</li> <li>• Fees and Charges</li> </ul>

For more information and the submission form, please visit [kaweraudc.govt.nz](http://kaweraudc.govt.nz) or call 07 306 9009 for a copy.

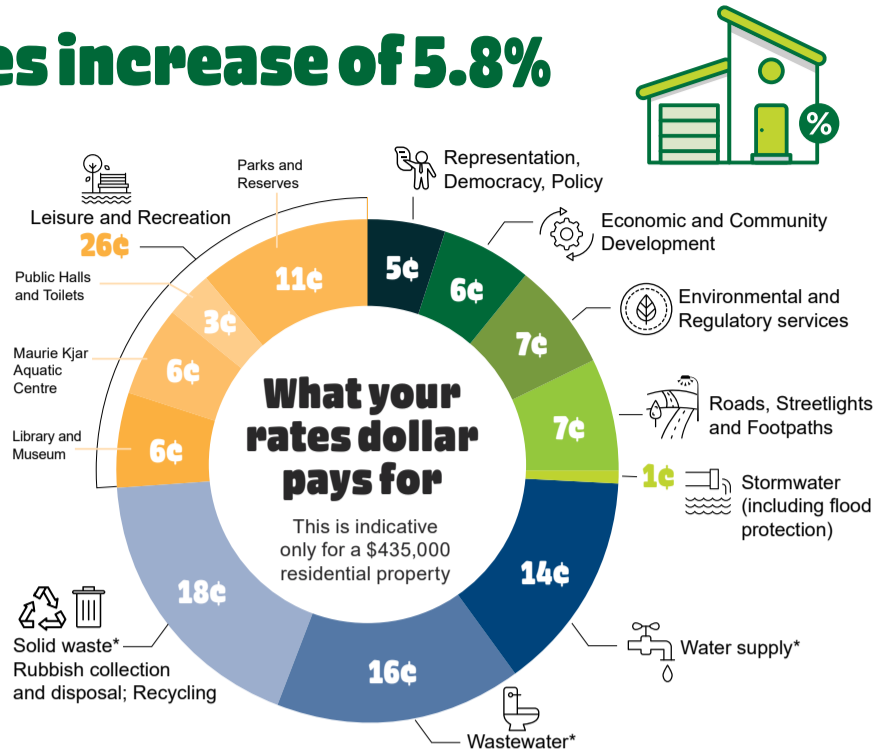
# Your feedback is appreciated on:

## 1. Proposed rates increase of 5.8%

Proposed rates increase of 5.8%. This is the overall rates increase proposed, based on keeping the same level of services for the community. The actual rates increase per property will depend on the value of the property.

**Tell us if you support the 5.8% rates increase, or if you don't, what you would like to see changed or removed to reduce the costs to provide services.**

*\*These rates comprise a uniform annual charge per property and the remainder of this charge is based upon property value.*



## 2. Keep the Uniform Annual General Charge at \$900 or reduce to \$850 per property

The Uniform Annual General Charge or UAGC is the minimum rates charge per property.

**Should we keep the UAGC at \$900 or reduce it to \$850 due to the impact of the increased targeted water and wastewater rates?**

Capital Value	Rates 2025/26	OPTION 1				OPTION 2			
		Proposed Rates 2026/27 UAGC = \$900	Increase in Rates (\$)	% increase	Weekly increase	Proposed Rates 2026/27 UAGC = \$850	Increase in Rates (\$)	% increase	Weekly increase
<b>Residential</b>									
\$305,000	\$3,040	\$3,244	\$204	6.7%	\$4	\$3,233	\$193	6.3%	\$4
\$390,000	\$3,455	\$3,686	\$231	6.7%	\$4	\$3,686	\$231	6.7%	\$4
\$435,000	\$3,675	\$3,920	\$245	6.7%	\$5	\$3,926	\$251	6.8%	\$5
\$520,000	\$4,090	\$4,362	\$272	6.7%	\$5	\$4,379	\$289	7.1%	\$6
\$650,000	\$4,725	\$5,038	\$313	6.7%	\$6	\$5,072	\$347	7.3%	\$7
<b>Commercial</b>									
\$240,000	\$8,421	\$8,914	\$493	5.8%	\$9	\$8,871	\$450	5.3%	\$9
\$405,000	\$13,352	\$14,118	\$766	5.7%	\$15	\$14,081	\$729	5.5%	\$14
\$1,010,000	\$31,433	\$33,202	\$1,769	5.6%	\$34	\$33,182	\$1,749	5.6%	\$34
<b>Industrial</b>									
\$11,693,000	\$350,694	\$370,176	\$19,481	5.5%	\$375	\$370,477	\$19,783	5.6%	\$380
\$19,300,000	\$578,030	\$609,957	\$31,927	5.5%	\$614	\$610,485	\$32,455	5.6%	\$624
\$34,750,000	\$1,039,623	\$1,097,295	\$57,672	5.5%	\$1,109	\$1,098,288	\$58,665	5.6%	\$1,128
\$46,250,000	\$1,383,081	\$1,460,040	\$76,959	5.6%	\$1,480	\$1,461,377	\$78,296	5.7%	\$1,506

\*Important note: when comparing the rates between 2025-26 and 2026-27, there are varying impacts on individual properties due to the gradual increase of the targeted water and wastewater rates. Targeted rates are a set amount per property, which does impact lower value properties more than higher-value properties.



## Challenges and future opportunities

- Delivering the best value for money with core services water, wastewater, stormwater, regulatory and planning, roading and footpaths.
- 'Ring fencing' our in-house business unit to continue delivering water services to the district while introducing targeted rates for water services. This entails separating water-related financing and reporting from other council activities.
- With a longer-term focus, Kawerau is working with Rotorua, Whakatāne and Ōpōtiki councils and technical expertise to investigate the risks, benefits and opportunities of delivering water services together from 2029. In late 2026, each council will consult with their own communities as to the outcomes of the report, and preferred future options.
- Simplifying Local Government legislation proposes setting up Combined Territory Boards governed by Bay of Plenty council mayors instead of the incumbent elected members of the Bay of Plenty Regional Council.
- There are uncertainties of the impacts of the proposed Simplifying Local Government legislation including the proposed rates capping between 2% and 4% by 2029. The only certainty is that there will be change.
- Managing costs in an increasing climate of increases, especially with the current war and impacts on fuel costs.
- Focusing on increasing economic and community development including a Kawerau-centric economic development strategy.
- Funding investigations into the development of a new Community Library and Research Centre are proposed in the coming years.
- Delay installation of a manganese removal plant at Te Wai o Marukaa which requires an investment of approximately \$1.072 million. Testing during the past year of Te Wai o Marukaa shows manganese levels have significantly decreased.
- Reviewing and streamlining services as we prepare directions and decisions for the future in the Long Term Plan 2027-2037.

Let's talk about Annual Plan Mahere ā Tau 2026/27

## Do you support what is being proposed?

If not, then please tell us what...

**Open for feedback and submissions 17 April to 18 May 2026**



Scan to find out more and make a submission online

- Email [submissions@kaweraudc.govt.nz](mailto:submissions@kaweraudc.govt.nz)
- Website [kaweraudc.govt.nz](http://kaweraudc.govt.nz)
- Facebook Messenger
- Drop your submission to Council office, isite or library

For more information check our website [kaweraudc.govt.nz](http://kaweraudc.govt.nz) or attend a community engagement meeting.