

# ETŪ MŌ TOU HAPORI ETŪ MŌ TE KAUNIHERA

---

## STAND UP FOR YOUR COMMUNITY STAND FOR COUNCIL



## Candidate Information



Kō Pūtauaki te Maunga  
Kō Te Aotahi te Tangata  
Kō Te Takanga i o Apa te wai  
Kō Tūwharetoa te Iwi  
Kō Te Arawa te Waka  
Tihei Mauri Ora

Pūtauaki is the mountain  
Te Aotahi is the guardian  
Te Takanga i o Apa is the water  
Tūwharetoa is the tribe  
Te Arawa is the canoe  
There is Life

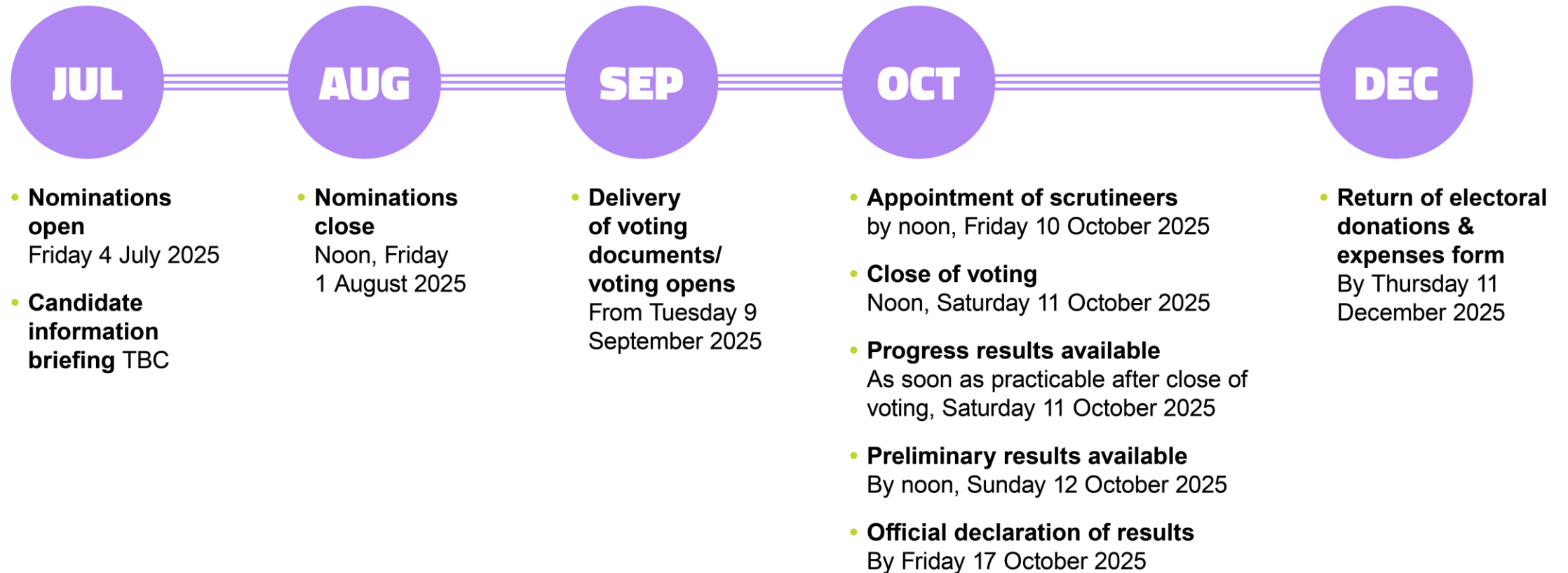




# OUR VISION

To create a resilient and sustainable Kawerau District that can meet the needs of the future.

# KEY DATES



# Kawerau District Council

## Ko wai tātou? Who are we?

### **Kawerau District Council is a territorial authority**

67 territorial authorities in Aotearoa New Zealand

- 6 of these are unitary authorities
- 13 are city councils (i.e., Tauranga City Council)
- 53 are district councils like Kawerau District Council

11 regional councils in Aotearoa New Zealand

- Including Bay of Plenty Regional Council (2025 elections)



# Kawerau District Council

## Ko wai tātou? Who are we?

### **Kawerau District celebrated 71 years in 2025**

- Community approx. 7,820 people
- 2,906 rateable properties in the Kawerau District
  - 2,739 residential properties
  - 167 business, commercial and industrial

### **Council governance comprises...**

- Mayor and eight Councillors elected

### **Council operations comprises...**

- Chief Executive who responsible for operations and services provided by approx. 95 staff



# What does Council do?

**Kawerau District Council meets regularly to make any decisions that impact the day-to-day lives of people in the Kawerau District.**

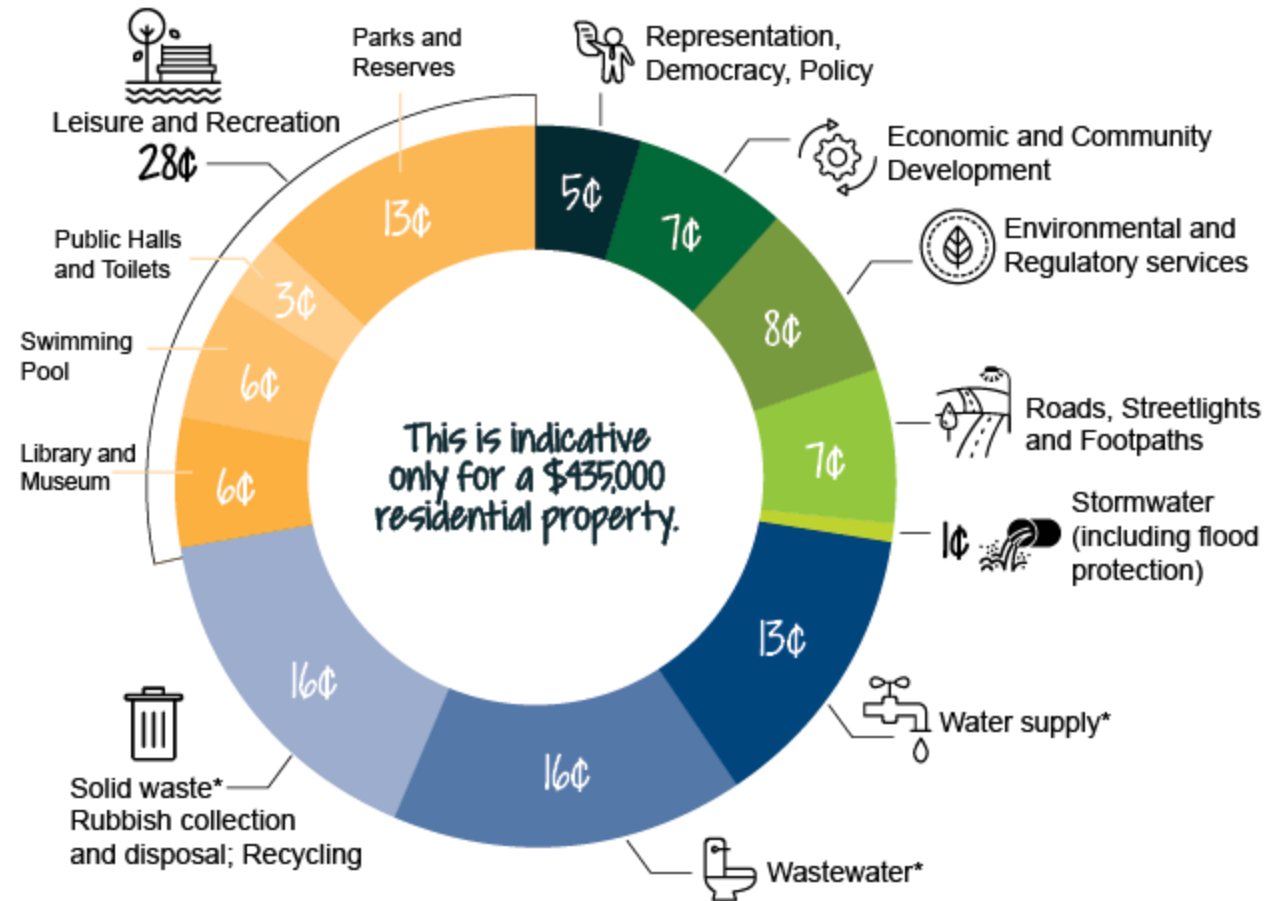
The Council governs a wide range of local services including roads and footpaths, water systems, rubbish collection, libraries, parks and reserves, community services such as facilities and events, dog registration, community and economic development, district planning, regulatory services, and building control services...



# Where each rates dollar is invested...

This shows how each dollar of rates funding is utilised for the services provided to the Kawerau community.

For a property valued at \$435,000 the rates dollar is split like this...



# Council operations

## How is council funded and the costs?

Council operations, services and projects are funded mainly from rates, in addition to government subsidies from NZTA for roading and other grants:

- In the current year council's budget is \$22.329 million (rates funds \$14.583 million)
- In the coming year 1 July 2025 to 30 June 2026, the total revenue needed to maintain the current levels of service, is \$24.215 million:
  - \$15.811 million funded from rates commercial, industrial and residential properties
  - The difference of \$1,227,480 million is what results in the 8.5% rates increase next year

# Big decisions in 2025

## Local Water Done Well

After community consultation, Council must submit a water service delivery plan by 3 September 2025

### Here's how our internal business unit stacks up against the multi-council controlled organisation...

Upgrade new drinking water infrastructure faster and cheaper	✓	—
Complete an \$11.5 million upgrade of wastewater network using depreciation reserves over coming nine years	✓	—
Maintain better value for ratepayers	✓	✓
Maintain excellent service response	✓	—
Meet the demand for growth in the district	✓	✓
Independent organisations monitor water quality and charges	✓	✓
Ability to sell off water assets (privatise)	✗	✗
Elected Members keep decision-making authority of water services delivery	✓	✗
Requires targeted rates for waters in 2025-2026 and beyond	✓	✓

✓ YES — SOMEWHAT ✗ NO



In-house business unit	Multi Council company (CCO)
✓	—
✓	—
✓	✓
✓	—
✓	✓
✓	✓
✗	✗
✓	✗
✓	✓

*The options*

**Option 1**  
**Internal – an in-house business unit**

Council's preferred option

This means we keep delivering water services in-house.  
This is our preferred option.

**Option 2**  
**Multi-Council Controlled Organisation**

Join with our neighbours Whakatāne, Ōpōtiki and Rotorua Lakes District Councils to form multi-Council Controlled Organisation (CCO) to deliver water services.  
This is our alternative option.

**LOCAL WATER DONE WELL.**

KAWERAU DISTRICT COUNCIL  
Te Kaunihera ā rohe o Kawerau

Kōrero mai  
Let's talk  
wai

# Kawerau District Council

## Future challenges and opportunities

### What is on the horizon?

- Solid waste review – it costs the community approx. \$3 million each year to collect, process and transport refuse (recycling, green waste and residual waste). Solid waste is one of the highest operational costs for Kawerau.
- Ensuring resilient drinking water supplies – ensuring plentiful drinking water means a manganese removal plant will be required for Te Wai o Marukaa Spring
- Leveraging from the Regional Economic Deal strategy with Whakatāne, Ōpōtiki and Bay of Plenty Regional Councils
- Growing our District – continue to enable and support economic and community development



# Kawerau District Council

## Challenges and opportunities continued

### What is on the horizon?

- Shaping the future of Kawerau – utilising partnerships and spatial planning outputs to enhance and enable economic and community development. Council is about to embark on facilitating a district-wide economic development strategy for the district
- Legislative reforms – reviews of the Resource Management Act (RMA), Building Act, Civil Defence Emergency Act, Health and Safety Act, and the proposed recommendations of the Local Government Review, are likely to impact Kawerau District Council
- Community well-being - continuing to maintain and enhance community facilities



**ETŪ MŌ TOU HAPORI**  
**ETŪ MŌ TE KAUNIHĒRA**

**STAND UP FOR**  
**YOUR COMMUNITY**  
**STAND FOR COUNCIL**

**Nominations open**  
4 July – 12 noon, 1 August



Find out more at  
**[kaweraudc.govt.nz](http://kaweraudc.govt.nz)**

Vote.NZ

[Candidates' guidance - Local Government New Zealand - LGNZ](#)

A decorative graphic at the bottom of the slide consisting of three parallel white lines that extend across the width of the slide, ending in a stylized, multi-lined chevron or mountain-like shape on the right side.