

Kawerau District Council

Freedom Camping Site Re-Assessments

www.kaweraudc.govt.nz

Kawerau District Council

Site Re-Assessments

Re-Assessment of Site Assessments to inform the Freedom Camping Bylaw Development

About this document

Kawerau District Council completed an initial site assessment in June 2024. After public consultation and the outcome of the Queenstown Lakes District Council vs..... Kawerau District Council has determined that the initial site assessments took into elements such as amenity and economic values into consideration in the site assessment which should not have been included. Re-assessments have been completed and the proposed Freedom Camping Bylaw will be reviewed in light of any changes to the site assessments.

This information was initially gathered by internal staff and includes feedback received from the public as a part of the first round of public consultation.

This document sets out local authority areas, controlled by Council and may be used for freedom camping. Each area has been re-assessed against the criteria outlined in section 11 of the Freedom Camping Act 2011, and will help inform the proposed Freedom Camping Bylaw.

Version	Date	Comments
01	June 2024	Site assessments informing draft Proposed Freedom Camping Bylaw for consideration by Council
02	November 2024	Re assessment of all site assessments after the initial community consultation

Table of Contents

1	Introduction.....	3
2	Assessment Approach.....	4
3	Scope	4
4	Reserves and the Relationship between the Reserves Act 197 and Freedom Camping Bylaws	5
5	Purpose of Protection	5
5.1	Protection of the area.....	6
5.2	Protection of the health and safety of people who may visit the area.....	7
5.3	Protection of access to the area.....	7
6	Assessment Criteria under the Freedom Camping Act.....	7
7	Summary of Site Assessments.....	8
8	Site Assessments	12
8.1	Recreation Reserves – Important Reserves.....	12
8.2	Recreation Reserves – Neighbourhood Reserves	38
8.3	Local Purpose Reserves - Amenity Reserves	62
8.3.1	Local Purpose Reserves – General.....	63
8.3.2	Local Purpose Reserves - Esplanade Reserves	73
8.3.3	Local Purpose Reserves – Cemetery	73
8.3.4	Local Purpose Reserves – Utility Reserves.....	75
8.4	Council Owned Land.....	76

1 Introduction

The Freedom Camping Act 2011 enables Councils to make bylaws to regulate freedom camping on land that is controlled or managed by Council. Under the Freedom Camping Act 2011, freedom camping is permitted unless it is restricted or prohibited in an area, in accordance with a bylaw or other Act such as the Reserves Act 1977.

Kawerau District Council ('Council') has had a freedom camping bylaw in place since 2019. The bylaw has the purpose to protect the environment in the area, protect the health and safety of people who may visit the area and protect access to the area.

In order to determine whether there is a need to prohibit or restrict access to Council owned or administer land, Council initially undertook site assessment in June 2024. Upon public consultation and a recent High Court Case, Council has confirmed elements were considered in the initial assessment (amenity and economic values), which should not have been considered under s11 of the Freedom Camping Act 2011. This re-assessment has been completed removing the amenity and economic considerations and reviewed the suitability of Council land for the use of freedom camping under the Freedom Camping Act 2011.

While the review of the June 2024 site assessments has changed some scoring of the individual criteria for various sites, the site re-assessments have not lead to significant changes. No sites have been reclassified to enable freedom camping, that were previously recommended to be prohibited or restricted in the June 2024 site assessments. However, It is recommended that three previously included sites, are no longer included in the Proposed Freedom Camping Bylaw as freedom camping be prohibited for other reasons.¹

The aim of the site assessment is to:

- consider all land owned or administered by Council within the Kawerau district, where there is potential to camp in a vehicle;
- provide a clear determination of what a significant site is; and
- provide a consistent and fair approach to classification of Council-owned land in relation to restrictions or prohibitions on freedom camping within the Kawerau District against the criteria set down in the Act.

This is to ensure freedom camping can still occur within the district, while enabling Council to place reasonable restrictions on freedom camping in line with s11 of the Freedom Camping Act 2011 which enables restrictions to:

- protect the environment in the area;
- protect the health and safety of people who may visit the area; and
- protect access to the area.

While comments in the freedom camping assessment table included in this document may remain unchanged from the June 2024 version of the site assessments, Council confirms that it has undertaken a complete and full re-assessment of each criteria for every site. Notes have been added under the assessments, where the scoring value has changed to provide a brief explanation for the change.

¹ Section 44(1) of the Reserves Act 1977 prohibits camping where not specifically incorporated in a operative Reserves Management Plan.

2 Assessment Approach

The following methodology has been applied to this assessment:

1. Assess the scope of land to be included and excluded by nature of ownership, administration, legislation or practical limitations of access (see exclusions).
2. Define what is to be protected under the three purposes of the Act (see purpose of protection).
3. Develop an assessment/scoring system to assess the degree to which a site requires protection from the effects of freedom camping.
4. Assess sites using the assessment system.
5. Present the findings of the assessment.

This approach is in accordance with national best practice and is consistent with other councils approach to the assessment of sites under the Act.

3 Scope

Kawerau District Council believes it is important to balance the regulatory aspect of enforcing the bylaw to protect and maintain the natural environment of the district, with promoting and encouraging the tourist opportunity of freedom camping in the district.

The sites included in this assessment fall within Kawerau District Council area, defined in section 6(1) of the Freedom Camping Act 2011 as land controlled or managed by or on behalf of Council.

The following land is considered to be out of scope for this assessment and have not been assessed:

Private Land – Under s3(4) of the Freedom Camping Act, the regulation of freedom camping on private land is specifically excluded. (Land owned by private persons/companies)

Crown owned Public Land - (not administered by Council) Land administered by the Department of Conservation, Land Information New Zealand or Waka Kotahi NZ Transport Agency or other crown agencies.

Occupied Council Land - Council administered land including reserves which are fully occupied under commercial or community lease or licence or occupied by Council for administration/operational purposes.

Areas where other parking regulations manage vehicles - While freedom camping is permitted on a road (under the Freedom Camping Act 2011, it is subject to the provisions of the Land Transport Act 1998, and any rules or regulations made under that Act. The Land Transport (Road User) Rule 2004 restricts places a person can park a vehicle (and therefore freedom camp) as follows:

- Under rule 6.1 a driver must not park a vehicle on a road, without due care or without reasonable consideration for other road users.
- Under rule 6.2(1) vehicles must not be parked on a roadway (portion of the road used for vehicular traffic) if it can be parked on the road margin (adjacent to, but not forming part of, either the roadway or the footpath) without damaging ornamental grass plots, shrubs, or flower beds on the margin.

- Under rule 6.3 there is a prohibition on parking on, or close to, a corner, bend, rise, dip, traffic island, or intersection, if the parking will obstruct (or be likely to obstruct) other traffic or any view of the roadway to the driver of a vehicle approaching that corner, bend, rise, dip, traffic island, or intersection.
- Under rule 6.9 a driver must not park in a way that obstructs entry to, or exit from, any driveway.

In addition, the Council is undertaking a review of our bylaws, which includes the Traffic and Parking Bylaw 2011, which currently manages parking on roads within the District, including restriction of heavy motor vehicles being prohibited from parking for more than 30 minutes within Kawerau District roads. This would apply to some larger freedom camping vehicles.² A person freedom camping within Kawerau District must comply with all Land Transport Act 1998 rules and regulations and any bylaws enforce within Kawerau District Council including but not limited to any Traffic and Parking Bylaw, and any Dog Control or Animal Control Bylaw.

4 Reserves and the Relationship between the Reserves Act 1977 and Freedom Camping Bylaws

The Reserves Act 1977³ prohibits freedom camping on reserves unless approved by the Minister, provided for in a campground, or permitted within a reserves management plan. In contrast, the Freedom Camping Act 2011 permits camping unless restricted or prohibited under a Bylaw made under the Freedom Camping Act 2011.

Council does not have any land set aside or administered as a campground.

Council's Reserve Management Plan has the following policies permitting camping under certain conditions:

- Prideaux Park - freedom camping in fully self-contained motor vehicles is allowed behind the field pavilion.
- Firmin Field – freedom camping in fully self-contained motor vehicles is allowed in the car park adjacent to the sports field when parking in designated parks. Any parking on the grassed area shall be at the northern end of the reserve.

Camping is prohibited on all other reserve land administered by Kawerau District Council under section 44(1)e of the Reserves Act 1977. Freedom camping within a reserve which is not enable under a Reserve Management Plan, is breach of s44(1)e of the Reserves Act 1977, the Freedom Camping Act 2011 or any Bylaw enacted under this Act does not overrule the Reserves Act 1977.

5 Purpose of Protection

Freedom camping bylaws manage how and where freedom camping can occur by identifying areas where freedom camping is prohibited, restricted and any additional conditions that may be needed in some areas.

² Waka Kotahi provides guidance on additional requirements for motorhomes which are considered a heavy motor vehicle (a vehicle which has a gross vehicle mass of over 35,000kg) on their website:

<https://www.nzta.govt.nz/assets/resources/new-motorhomes-information-for-importers-traders-and-privatepurchasers/new-motorhomes.pdf>

³ Reserves Act 1977, s44(1)(e)

While the Freedom Camping Act 2011 (the Act) is permissive by default, it recognises some areas may not be suitable for freedom camping. Any potential areas for prohibition or restriction must be first assessed against the criteria in section 11(2) of the Act. Kawerau District Council may make a bylaw under the Freedom Camping Act 2011 only if it is satisfied that:

- (a) *the bylaw is necessary for one or more of the following purposes:*
 - (i) *to protect the area;*
 - (ii) *to protect the health and safety of people who may visit the area;*
 - (iii) *to protect access to the area; and*
- (b) *the bylaw is the most appropriate and proportionate way of addressing the perceived problem in relation to that area; and*
- (c) *the bylaw is not inconsistent with the New Zealand Bill of Rights Act 1990.*⁴

This assessment considers the need or otherwise to protect specific sites against the three purposes outlined above. These are considered to be the criteria for assessment.

The following section outlines how Council has interpreted the assessment criteria specifically. It also shows how the assessment has been undertaken using the assessment criteria.

5.1 Protection of the area

- Protection of the natural values of an area including ecosystems, biodiversity, plants and wildlife including the risk of damage by fire.
- Protection of the cultural values of an area including historic sites of significance to iwi and early settlement of the area.
- ~~Protection of the amenity values of an area including residential and commercial areas (e.g. protection of views from residential and commercial properties, protection from noise from camping activity and arrival and departure of campers, loss of privacy).~~ **Removed from previous assessment criteria**
- Protection of water quality of an area or catchment where run-off may impact on drinking water quality (e.g. protection of drinking water from contamination from human waste).
- ~~Protection of the economic values of an area including residential and commercial areas (e.g. residential property values and loss of trade in commercial areas through occupation of car parks).~~ **Removed from previous assessment criteria**
- Protection of the recreational values of an area including the capacity of a site, visitor experience and setting.

⁴ Freedom Camping Act 2011, s11(2)(a)

5.2 Protection of the health and safety of people who may visit the area

- Protection of visitors to an area from fire, crime or other direct threats (e.g. in areas in close proximity to high fire risk areas, or areas where there is a higher risk of crime, or direct treats such as flood or landslide risks).
- Protection of visitors to an area from hazards associated with traffic and traffic management including access to and from a site (including emergency vehicles).
- Protection of visitors from hazards associated with the land and topography.
- Protection of those using the area for other activities, such as sports grounds.
- Protection of the area from persistent vandalism and vagrancy.

5.3 Protection of access to the area

- Protection of access to an area for residents and other (non-camping) visitors (e.g. ability to access residential areas, boat ramps, foreshores, car parks, rivers, sports recreation and community facilities including cemeteries).
- Protection of access to an area for emergency services, service vehicles (e.g. rubbish trucks), public transport, school buses and maintenance vehicles.
- Protection of access to prevent unreasonable damage to Council infrastructure or significant flora and fauna.

6 Assessment Criteria under the Freedom Camping Act

The assessment criteria is based on the requirements under s11 of the Freedom Camping Act 2011. A scoring method has been assigned to each of the criteria set under s11 of the Freedom camping Act.

The score criteria assigns a score of between 1 (being the lowest) to 5 (being the highest) and will ensure a fair and consistent assessment of each area. The total score of each of the three criteria combined provides the total significance score.

If the significance score for any one of the three criteria (area protection, health and safety of people who may visit, access to the area) is 5, this means the site is deemed to have a “significant issue” and freedom camping may be prohibited or restricted.

Cumulatively over all three criteria, if the significance score is 9 or above, this means the site is determined to be a significant site and freedom camping may be prohibited or restricted. If the significance score is 8 or below, freedom camping may be permitted at the site, but only where enabled under the Reserve Act 1977. A score of 8 or below many have some restrictions specific to the type of camping at the site.

Assessment Scoring Method:

Protection of the Area – Cultural Significance, Historical Significance, Flora or Fauna	
1	No significant area concerns
2	Low concerns about areas that need protecting
3	Contains some areas that should be protected

4	Contains some significant historical, cultural or environmental areas.
5	Has historical, cultural or environmental significance and requires full protection

Protect the Health and Safety of those visiting the area	
1	No health and safety concerns
2	Low health and safety concerns
3	Minimal health and safety concerns (risk for the elderly/vulnerable or children)
4	Significant health and safety concerns
5	Risk to health and safety is too great to allow access to the site

Protection of the Access to the Area	
1	Fully formed access to the site
2	Good access to the site, which would not cause damage
3	Moderate access to the site, and any vehicle access would cause minimal damage
4	Restricted access to the site, and any vehicle access would cause damage
5	No access to the site, and any vehicle access would cause significant damage

During previous consultation, a submitter raised concerns regarding the assessment being incorrect as where there are no issues this should be 0 not 1. The total scoring system is based on the levels as set out above. Where the 1 is removed, then the significance number would have to be reconsidered to reflect the new score system. Hence we have made no change to the scoring system.

7 Summary of Site Assessments

The following table provides an overview of site assessments undertaken. For more information about each area, review the detailed site assessments in section 8 of this document. Numbers in red are a change from the previous assessment.

Area Name	Assessment				Assessment Outcome
	Protect Area (/5)	Protect H&S (/5)	Protect Access (/5)	Total (/15)	
Boyce Park	4	2	3	9	<p>Restrict freedom camping at the Boyce Park to self-contained vehicles upon gaining prior consent from Council. Prior consent considered where other sites are unavailable.</p> <p><i>Would require an amendment to the Reserve Management Plan to include proposed freedom camping location for self-contained vehicles only.</i></p>

Firmin Field	4	3	3	10	<p>Restrict freedom camping at the Firmin Field to self-contained vehicles only along the eastern edge of the carpark. Upon Council prior consent, parking on the field may be enabled for organised groups in self-contained vehicles along the north and eastern boundaries (10m from riverbank). Non-self-contained vehicles and tents may be considered for prior consent.</p> <p><i>Would require an amendment to the Reserve Management Plan to enable self-contained vehicle being used for freedom camping on the reserve.</i></p>
Keith McKenzie Park	4	2	3	9	Prohibit freedom camping at Keith McKenzie Park in the proposed bylaw.
Lyn Hartley Reserve	3	2	5	10	Prohibit freedom camping at Lyn Hartley Reserve in the proposed bylaw.
Monika Lanham Reserve	5	4	3	12	Prohibit freedom camping at Monika Lanham Reserve in the proposed bylaw.
Pat Baker/Dump Reserve	4	4	5	13	Prohibit freedom camping at Pat Baker Reserve in the proposed bylaw.
Prideaux Park	4	4	2	10	<p>Restrict freedom camping to the south side of the entrance and behind the Sport Field Pavilion. In addition, restrict the use of the Maurie Kjar Aquatic Centre carpark in self-contained vehicles only, between the hours of 4pm and 9am.</p> <p><i>Would require an amendment to the Reserve Management Plan to include different areas for self-contained vehicle being used for freedom camping on the reserve.</i></p>
Roy Weston Walk	4	3	4	11	Prohibit freedom camping at Roy Weston Reserve and the adjacent road (Porritt Drive) in the proposed bylaw.
Ruruanga Reserve	4	1	5	10	Prohibit freedom camping from Ruruanga Reserve in the proposed bylaw.
Stoneham Walk	5	3	4	12	Prohibit freedom camping from Stoneham Walk and associated

					car park (Fenton Mill Road) in the proposed bylaw.
Tarawera Park	4	3	3	10	Prohibit freedom camping from Tarawera Park and associated car park in the proposed bylaw.
River Road Reserve	5	4	4	13	Prohibit freedom camping from River Road Reserve in the proposed bylaw.
Waterhouse Reserve	5	3	3	11	Restrict freedom camping at the Waterhouse Reserve, to organised groups, upon prior consent, for self-contained vehicles. Non-self-contained vehicles and tents may be considered for prior consent. <i>Would require an amendment to the Reserve Management Plan to include proposed freedom camping location for self-contained vehicles only.</i>
Waterwheel Heritage Park	4	1	3	8	Do not include the area in a proposed bylaw. <i>This will have the effect of freedom camping on the reserve remaining prohibited under section 44 of the Reserves Act 1977.</i>
Stock Pound (Yet to be Named)	3	1	5	9	Prohibit freedom camping from the previous Stock Pound in the proposed bylaw.
Ballance/Seddon Street Reserve	3	3	5	11	Prohibit freedom camping from Ballance Street and Seddon Street Reserves in the proposed bylaw.
Beattie/Shepherd Road Reserve	3	3	5	11	Prohibit freedom camping from Beattie Road and Shepherd Road Reserves in the proposed bylaw.
Boss Road Reserve	3	2	5	10	Prohibit freedom camping from Boss Road Reserve in the proposed bylaw.
Cobham Drive Reserve	3	3	4	10	Prohibit freedom camping at Cobham Drive Reserve and the adjacent road (Cobham Drive and Holland Crescent) in the proposed bylaw.
Fraser Street Reserve	3	2	5	10	Prohibit freedom camping from Fraser Street Reserve in the proposed bylaw.

Hadley Street Reserve	3	3	5	11	Prohibit freedom camping from Hadley Street Reserve in the proposed bylaw.
Hilldale Reserve	3	3	4	10	Prohibit freedom camping from Hilldale Reserve in the proposed bylaw.
MacKenzie Street Reserve	3	3	5	11	Prohibit freedom camping from MacKenzie Street Reserve in the proposed bylaw.
Porritt Glade Reserve	3	4	5	12	Prohibit freedom camping from Porritt Glade Reserve in the proposed bylaw.
Recreation Centre Reserve	3	4	2	9	Prohibit freedom camping from Recreation Centre Reserve in the proposed bylaw.
Robinson Street Reserve	3	3	4	10	Prohibit freedom camping from Robinson Street Reserve and the adjacent road (Robinson Street) in the proposed bylaw.
Tuwharetoa Road Reserve	3	3	5	11	Prohibit freedom camping from Tuwharetoa Road Reserve in the proposed bylaw.
Valley Road/Ryder Place Reserve	3	3	5	11	Prohibit freedom camping from Valley Road and Ryder Place Reserves in the proposed bylaw.
Valley Road/Kirk Crescent Reserve	3	3	5	11	Prohibit freedom camping from Valley Road and Kirk Crescent Reserves in the proposed bylaw.
Valley Road/Delamere Drive Reserve	3	3	5	11	Prohibit freedom camping from Valley Road and Delamere Drive Reserves in the proposed bylaw.
Weld Street Reserve	3	4	3	10	Prohibit freedom camping at Weld Street Reserve and the adjacent road (Weld Street) in the proposed bylaw.
Beattie Road Reserve	3	2	4	9	Prohibit freedom camping from Beattie Road Reserve in the proposed bylaw.
Fenton Street Reserve	2	1	5	8	Prohibit freedom camping from Fenton Street Reserve in the proposed bylaw. <i>Maximum score of 5 under any one elements indicates a need to protect the area.</i>
Owen/Julian Road Reserve	3	1	5	9	Prohibit freedom camping from Owen Road and Julian Road Reserves in the proposed bylaw.

Reserve near Manukorihi Drive	4	1	5	10	Prohibit freedom camping at the reserve near Manukorihi Drive in the proposed bylaw.
Tamarangi Drive (north and south side of road)	2	2	4	8	Do not include the area in a proposed bylaw. <i>This will have the effect of freedom camping on the reserve remaining prohibited under section 44 of the Reserves Act 1977.</i>
Cemetery	5	4	3	12	Prohibit freedom camping from the cemetery and the road adjacent to the cemetery.
Beattie Road Reservoir Reserve	5	1	5	11	Prohibit freedom camping at the Beattie Road Reservoir Reserve in the proposed bylaw.
Circus Paddock	2	3	3	8	Do not include the area in a proposed bylaw. <i>Proposed lease will exclude from Freedom Camping Act 2011 requirements.</i>

8 Site Assessments

8.1 Recreation Reserves – Important Reserves

Recreation reserves are created "...for the purpose of providing areas for the recreation and sporting activities and the physical welfare and enjoyment of the public, and for the protection of the natural environment and beauty of the countryside, with emphasis on the retention of open spaces and on outdoor recreational activities, including recreational tracks in the countryside".⁵

There are fifteen recreation reserves in Kawerau, which because of their size, use, or importance to the Community can be regarded as 'important' reserves. The important reserves are:

Boyce Park

Legal Description	Area (ha)	Reserve Category
Lot 2 DPS 5883	4.0912	Recreation Reserve

⁵ Reserves Act 1977, section 17



Site description

Boyce Park is located along the western edge of the Tarawera River from Paramahana Drive in a southerly direction ending at Tarawera High School. This reserve is bordered by River Road on one side and the Tarawera River on the other.

The reserve is a large grassed reserve with large trees containing two small parking areas. The first is a small paved off street parking area, located adjacent to the Kawerau Judo and Martial Arts Club building. The Kawerau Judo and Martial Arts Club lease this parking area and land containing the building. The second paved parking area is on the southern end at the entrance from Waterhouse Street.

There is pedestrian access to the park from along Tamarangi Drive or River Road. A walking track follows the Tarawera River along a series of river banks and river flats through Boyce Park and extends beyond Boyce Park in both directions.

An important feature of this park is the access to the Tarawera River.

The grassed area of the reserve is fenced off with locked gates to prevent damage and vandalism by vehicles.

The area is a designated dog exercise area.

There are no public facilities available.

Freedom Camping Act Assessment

Assessment	Score	Comments
Protect the area	4	The esplanade along the river embankment has high value to the community, and is both culturally and naturally significant, and requires protection of the waterways from contamination.
Protect Health and Safety	2	Low health concerns due to the low use of the area.
Protect access	3	Single lane access is available to a small parking areas. Freedom campers would have an impact on the ability for other users to access the area for recreational purposes.

		All grass areas are fenced with locked gates to protect the fields.
Total Score	9	

Note: Assessment amended to remove the specific consideration of the Judo Club's use of the carpark area, which resulted in a reduced score.

Recommendation

This assessment against the criteria in the Act provides grounds for this site to be restricted or prohibited in a freedom camping bylaw.

The Reserve Management Plan for Boyce Park does not provide for freedom camping; therefore, freedom camping is currently prohibited on the reserve under section 44(1) of the Reserve Act 1977.

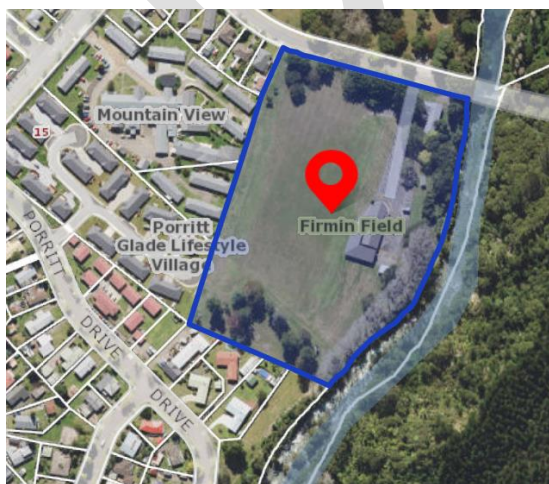
The current freedom camping bylaw allows restricted freedom camping at Boyce Park by organised groups, where granted approval by Council. Council is supportive of continuing to provide for some overflow, self-contained freedom camping on the reserve for organised groups where sufficient parking is not available at permanent sites within Kawerau District.

Therefore, if this reserve is included within the proposed bylaw as a restricted area, it is also recommended that the bylaw's statement of proposal also proposes an amendment to the Boyce Park reserve management plan as per the Reserves Act 1977, to ensure the bylaw and reserves management plan are consistent. The following restrictions are recommended:

- Council will consider applications for prior consent from organised groups where other permitted freedom camping areas are unlikely to be able to support the number of expected freedom campers.
- Freedom camping is only available to self-contained vehicles.
- All freedom campers must be a minimum of 10 metres from the bank along the eastern edge of the reserve.

Firmin Field

Legal Description	Area (ha)	Reserve Category
Part Lot 1 DPS 5882	3.63	Recreation Reserve



Site description

Firmin Field is located along the southern edge of Waterhouse Street and extends to the houses on Porritt Drive. On the eastern boundary is the Tarawera River and to the west is the Mountain View Resthome. Firmin Field is a large open grassed reserve. Along the edge of the river, trees and natural plants line the river banks. Trees also line the northern boundary of the field.

There is a large paved parking area on the north-eastern end of the reserve. Freedom camping is currently enabled at this location, where 6 powered sites are available (Keys available at the site).

Firmin Lodge (rental accommodation) is also located within the reserve, on the edge of the paved parking area. Too many freedom camping has the ability to negatively impact the capacity of the shared parking facilities and reduce visitor experience.

Toilets are available at this site 24/7, along with a dump station for wastewater.

The reserve field is fenced off with locked gates to protect the reserve from vehicles damaging the grassed area.

This area is a designated dog exercise area.

Freedom Camping Act Assessment

Assessment	Score	Comments
Protect the area	4	The esplanade along the river embankment has high value to the community, and is both culturally and naturally significant, requiring protection of the waterways from contamination. Freedom camping reduces the capacity and restricts access for other users which may reduce visitor experience of the area.
Protect Health and Safety	3	Public toilets are available on site and are open 24/7, however with freedom campers staying on site the public facilities sometimes struggles to meet demand. The parking area can become very busy, large vehicles can reduce visibility of pedestrians walking through the parking area. The area is used for recreational purposes with vehicles coming and going regularly.
Protect access	3	Good access and off street parking is available for vehicles. All grass areas are fenced with locked gates to protect the fields. The fields may be damaged with use in poor ground or weather conditions.
Total Score	10	

Note: Assessment included the reduce capacity under the protection of the area but resulted in not change to the score, however while not changing the assessment criteria for protecting access, this was amended to better reflect the scoring system. While access to the carpark is fully formed, the Firmin field is locked and access may damage the field.

Recommendation

This assessment against the criteria in the Act provides grounds for this site to be restricted or prohibited in a freedom camping bylaw.

The Reserve Management Plan for Firmin Lodge does not specifically provide for freedom camping; therefore, freedom camping is currently prohibited on the reserve under section 44(1) of the Reserve Act 1977.

The current freedom camping bylaw allows freedom camping on the carpark and Council provide 6 powered sites. Where approved by Council, consideration is also given to freedom camping on the grass field (including non-self-contained vehicles).

Based on the previous activity and the assessment undertaken it is recommended to restrict freedom camping at Firmin Field.

With the presence of a 24-hour toilet, the site was also considered as a possible option for vehicles that are not self-contained. The assessment indicates the area requires some protection from the effects of freedom camping, and it is recommended the restricted area remains for self-contained vehicles only as it is not suitable for freedom campers that are not self-contained.

Therefore, if this reserve is included within the proposed bylaw as a restricted area, it is also recommended that the bylaw's statement of proposal also proposes an amendment to the Firmin Field reserve management plan as per the Reserves Act 1977, to ensure the bylaw and reserves management plan are consistent. The following restrictions are recommended:

- Freedom camping is only available to self-contained vehicles, in the marked parking areas (signs to be installed) along the eastern side of the carpark (Maximum of 12 spaces available).
- Council may consider prior approval for self-contained vehicles to use the grassed field for large organised groups, where parking is available along the north and eastern side of the field (10 metres back from the riverbank and residential properties).

Keith McKenzie Park

Legal Description	Area (ha)	Reserve Category
Allot 379 Matata Parish	0.4157	Recreation Reserve



Site description

Keith McKenzie Park provides a rest area for drivers with access off Tamarangi Drive (State Highway 34), opposite Kawerau's tennis and netball courts.

The park is a small grassed reserve with developed trees throughout. The Ruruanga Stream flows through the park, which is designated a Junior Anglers stream, to encourage children to take up trout fishing.

There is a small paved area to the west and the far side can be access by two small footbridges where there is a short scenic walk.

The reserve is fenced off with locked gates to protect the reserve from vehicles damaging the grassed area.

There are no public facilities at this reserve.

Freedom Camping Act Assessment

Assessment	Score	Comments
Protect the area	4	The esplanade along the river embankment has high value to the community, and is both culturally and naturally significant, requiring protection of the waterways from contamination. Fencing is in place to minimise damage to sensitive areas.
Protect Health and Safety	2	Low health and safety concerns.
Protect access	3	There is good vehicle access to Keith McKenzie Park with an unsealed roundabout and short-term parking area. Parking on the grass may damage the park, particularly when it is wet. The rest of the park has been fenced to avoid vehicle access and prevent damage.
Total Score	9	

Recommendation

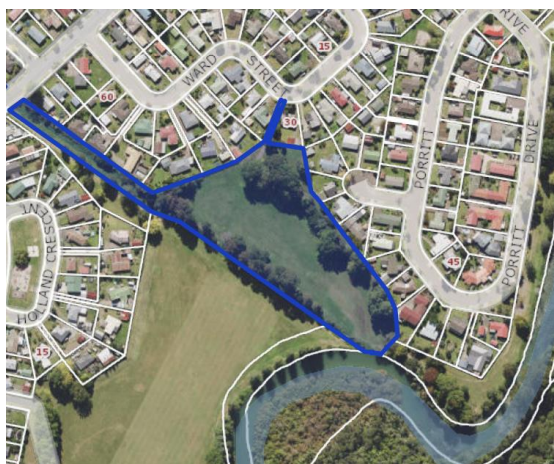
This assessment against the criteria in the Act provides grounds for this site to be restricted or prohibited in a freedom camping bylaw.

The Reserve Management Plan for Keith McKenzie Park does not provide for freedom camping; therefore, freedom camping is already prohibited on the reserve under section 44(1) of the Reserve Act 1977. Inclusion of the reserve as a prohibited area within the bylaw will enable a consistent approach to freedom camping regulation on the reserve.

Based on this assessment, it is recommended that Council propose to prohibit freedom camping on Keith McKenzie Park.

Lyn Hartley Reserve

Legal Description	Area (ha)	Reserve Category
Part Lot 1 DPS 5882	2.13	Recreation Reserve



Site description

Lyn Hartley Reserve is located western bank of Tarawera River between Ward Street and Porritt Drive. The main part of the reserve is behind the houses on Porritt Drive and Payne Crescent.

Pedestrian access is available off Ward Street, River Road and through either Tarawera Park or Roy Weston Walk. Vehicle access is available through formed access ways off River Road and Ward Street. Both vehicle access points are via narrow sealed or partly sealed access strips. Once the alleys open up, vehicle access strips end. The vehicle access points are gated and locked, to avoid damage to the reserve by vehicles.

The reserve is a large grassed reserve with an overflow stream boarding the southwest edge of Lyn Hartley Reserve.

The reserve is a designated dog area.

There are no public facilities at this reserve.

Freedom Camping Act Assessment

Assessment	Score	Comments
Protect the area	3	The esplanade along the river embankment has high value to the community, and is both culturally and naturally significant, requiring protection of the waterways from contamination.
Protect Health and Safety	2	Low health and safety concerns. Area used for exercising dogs.
Protect access	5	Locked gates to avoid damage to the grassed reserve exclude vehicle access. Pedestrian access is available.
Total Score	10	

Recommendation

This assessment against the criteria in the Act provides grounds for this site to be restricted or prohibited in a freedom camping bylaw.

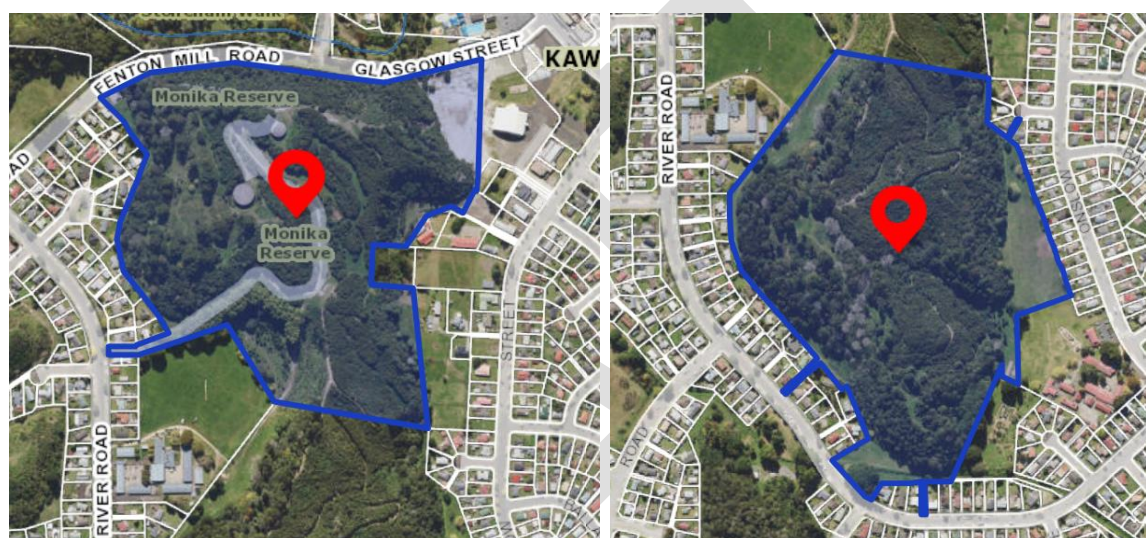
The Reserve Management Plan for Lyn Hartley Reserve does not provide for freedom camping; therefore, freedom camping is already prohibited on the reserve under section

44(1) of the Reserve Act 1977. Inclusion of the reserve as a prohibited area within the bylaw will enable a consistent approach to freedom camping regulation on the reserve.

Based on this assessment, it is recommended that Council propose to prohibit freedom camping on Lyn Hartley Reserve within a proposed bylaw.

Monika Lanham Reserve

Legal Description	Area (ha)	Reserve Category
Allot 984 SO 46775 Matata Parish	19.5508 ha	Recreation Reserve
Allot 983 SO 46774 Matata Parish	19.6178 ha	Recreation Reserve



Site description

Monika Lanham Reserve is a dominant feature in Kawerau and is surrounded by residential streets on all sides. The reserve is a hill to the west of the town centre, and is covered in a mixture of native and exotic trees, with some grassed areas around the lower edges. The reserve is home to one threatened native species – a dwarf Mistletoe and a restoration program has been undertaken to reinstate native plants.

Pedestrian access is available from various points from River Road, Onslow Street, Glasgow Street, Fenton Mill Road, Savage Street and Fraser Street. The reserve is fenced off with locked gates.

There two vehicle access points. The first is from Fenton Mill Road, where there is a very small off street parking area for short-term visitors to the site. The area is fenced beyond the small short-term parking area, allowing pedestrian traffic only. The second vehicle access is for maintenance vehicles and access to the water reservoirs only. This access is fenced, gated and locked to prevent vehicle damage to the area.

The reservoirs are located on the northern end of the reserve and store the towns water supply.

There are walking tracks, along with mountain bike tracks throughout the reserve.

The north eastern edge of the reserve there is an area of about 1000m² of geothermally active land. Some steam comes from vents in the ground and sulphur smell is evident, but the surface is not known to be hot. This area is also fenced.

The reserve contains archaeological sites including kumara pits, a sulphur mine and a pa site.

There are no public facilities at this reserve.

Freedom Camping Act Assessment

Assessment	Score	Comments
Protect the area	5	The reserve contains archaeological, culturally significant sites and community significant projects.
Protect Health and Safety	4	The northern edge of the reserve is geothermally active with some steam coming from vents in the ground and Sulphur smell being evident in the area. Entrance to this area is discouraged.
Protect access	3	There is good vehicle access to a small short-term parking area off Fenton Mill Road. Capacity is limited to two to three vehicles and is the well-frequented attraction. The rest of the park has been fence to avoid vehicle access and prevent damage.
Total Score	12	

Recommendation

This assessment against the criteria in the Act provides grounds for this site to be restricted or prohibited in a freedom camping bylaw.

The Reserve Management Plan for Monika Lanham Reserve does not provide for freedom camping; therefore, freedom camping is already prohibited on the reserve under section 44(1) of the Reserve Act 1977. Inclusion of the reserve as a prohibited area within the bylaw will enable a consistent approach to freedom camping regulation on the reserve.

Based on this assessment, it is recommended that Council propose to prohibit freedom camping on Monika Lanham Reserve within a proposed bylaw.

Pat Baker Reserve and Dump Reserve

Legal Description	Area (ha)	Reserve Category
Part Allot 499 Matata Parish	59.4888 (total) 0.2550(Pat Baker Reserve)	Utility Reserve



Site description

Pat Baker Reserve is located off River Road at the southern end of Kawerau. The reserve itself is a flat grassed of approximately 2550sm² of the larger utility reserve known as the Dump Reserve.

Pat Baker Reserve lays between River Road on the east and the overflow stream on the west. Residential housing is to the north and the Dump Reserve to the south.

This reserve provides an attractive frontage to the Dump Reserve with mature trees lining the reserve and providing shade for visitors. A footpath runs along the roadside and provides access to the reserve for the community.

This reserve is designated as a dog walking area.

The larger Dump Reserve houses the water supply pump house, which provides the community with fresh water tap. The refuse transfer station and recycling facility are also located within the reserve accessed via the Transfer Station Road.

This reserve is very large and is covered in mature trees creating a natural bush setting.

Access to the Dump Reserve is through locked gates on Transfer Station Road. There is an additional entrance of River Road, providing access to the pump house, where short term parking is available for collecting water. People come and go from here on a regular basis.

The reserve is largely fence off with locked gates, with the exception of Pat Baker Reserve and the pump house.

There are no public facilities on either reserve.

Freedom Camping Act Assessment

Assessment	Score	Comments
Protect the area	4	The reserve has a number of trees providing shade and provides an attractive frontage for the Dump Reserve. The Dump reserve has culturally significant areas that require protection. There is limited capacity and freedom camping would limit visitor experience.
Protect Health and Safety	4	A footpath runs along the side of the road providing walkways and access to the reserve for the community. Trees will reduce visibility of vehicles trying to access the reserve and could endanger pedestrian users. Parking availability on the roadside is narrow and the reserve is located partly on the corner of River Road. Parking may create visibility restrictions for those using the roads or footpath around the reserve. This poses safety risk to pedestrians and other road users. There is no public toilets or facilities at this reserve. Enabling freedom camping would pose a health and safety risk due to no available space parking and the level of traffic on the Transfer Station Road.
Protect access	5	There is no vehicle access to this reserve. Driving over the concrete berm and footpath will cause damage over time. The reserve is planted with trees providing shade and reducing the ability for vehicle access. The dump reserve is closed to the public except for opening hours of 12 to 4pm. Short-term parking is only available to customers using the reserve.
Total Score	13	

Note: While not changing the assessment criteria for protecting health and safety, this was amended to better reflect the scoring system. There are more than minimum health and safety concerns and significant concerns, better reflect the risks on the site.

Recommendation

This assessment against the criteria in the Act provides grounds for this site to be restricted or prohibited in a freedom camping bylaw.

The Reserve Management Plan for Pat Baker and Dump Reserve does not provide for freedom camping; therefore, freedom camping is already prohibited on the reserve under section 44(1) of the Reserve Act 1977. Inclusion of the reserve as a prohibited area within the bylaw will enable a consistent approach to freedom camping regulation on the reserve.

Based on this assessment, it is recommended Council propose to prohibit freedom camping on Pat Baker and Dump Reserve.

Prideaux Park

Legal Description	Area (ha)	Reserve Category
Lot 4 DPS 5882	7.8324	Recreation Reserve



Site description

This reserve is located immediately to the west of the town centre and is bounded by roadways. Tamarangi Drive to the north, Islington and Plunket Street to the east, Glasgow Street to the south and a combination of Massey Street and residential properties to the west.

Prideaux Park incorporates the Maurie Kjar Aquatic Centre, Kawerau Bowling Club, the sports field and Sports Pavilion, the Rangi Delamere Centre and the netball/tennis courts.

The Ruruanga stream flows through the reserve along the western side with a small bridge that provides a walkway across the stream and up onto Massey Street.

There are five vehicle entrances into Prideaux Park, this includes two accessing the Maurie Kjar Centre carpark, one to the Rangi Delamere Centre carpark, one from Plunket Street to the Prideaux Park Pavilion and the final access is from Tamarangi Drive. The Tamarangi Drive entrance is used for maintenance vehicles and is gated and locked. There is an unformed track running along the flood control embankment alongside the Ruruanga Stream to the Prideaux Park Pavilion.

The Maurie Kjar Aquatic Centre car park provides significant car parking which can get very busy with patients to the pools. Some concerns have been raised around the perceived health and safety of people in the carpark with traffic movements.

Pedestrian access is available from all sides. There are two footbridges within Prideaux Park. The first forms part of Hansen Walk which leads from the town centre to Massey Street. The second is further north and crosses the reserve onto the sports field.

A single red oak tree was planted in dedication to the passing of Lady Baden Powell.

The reserve is a largely flat grassed area with a natural embankment from Ruruanga Stream to Massey Street. A flood control embankment on the northern bank of Ruruanga Stream is adjacent to the grassed athletic track, providing a good spectator viewing area.

Ruruanga Stream is planted with a mix of native and exotic trees, providing a semi-wilderness area.

The reserve field is fenced off with locked gates to protect the sports field.

There is a dump station located within the Prideaux Park reserve for the use of self-contained vehicles. This dump station would benefit from an upgrade to reduce blockages.

Freedom campers have taken it upon themselves to extend the area to include the grassed area located directly north of the Bowling Club fence, on both sides of the road.

Prideaux Park is a designated dog exercise area.

There are no public facilities at this reserve.

Freedom Camping Act Assessment

Assessment	Score	Comments
Protect the area	4	The esplanade along the river embankment has high value to the community, and is culturally and naturally significant, requiring protection. Protection of the sport field is required, so designated parking areas help to minimise damage to the turf.
Protect Health and Safety	4	Prideaux Park has multiple areas and as such the health and safety risk differ across the Park. The Maurie Kaur Aquatic Centre and Bowling Club carpark, although good access is available, this carpark is frequently visited by children and vulnerable members of the community. Freedom camping vehicles can be large and reduce visibility creating a health and safety risk. Prideaux Park can be used for large events reducing the space available for freedom camping and creating a health and safety risk with vehicle movements unable to be managed. There may be times in which Prideaux Park should be closed to enable safer event management.
Protect access	2	Sealed vehicle access is available across the reserve including the Maurie Kaur Aquatic Centre, the Rangi Delamere Centre and the Sport Field Pavilion via a driveway off Plunket Street. There is a large carpark in front of the Maurie Kaur Centre and the Bowling Club providing off street parking. The Sports field is fenced off with a low fence and locked gate to ensure vehicles do not access the field without Council permission.
Total Score	10	

Recommendation

This assessment against the criteria in the Act provides grounds for this site to be restricted or prohibited in a freedom camping bylaw.

The Reserve Management Plan for Prideaux Park allows freedom camping in self-contained vehicle behind Prideaux Park Pavilion; therefore, freedom camping is enabled for this area under section 44(1) of the Reserve Act 1977.

The current freedom camping allows restricted freedom camping in self-contained vehicle only behind the Prideaux Park Pavilion and at the Maurie Kaur Aquatic Centre carpark between 4pm and 9am.

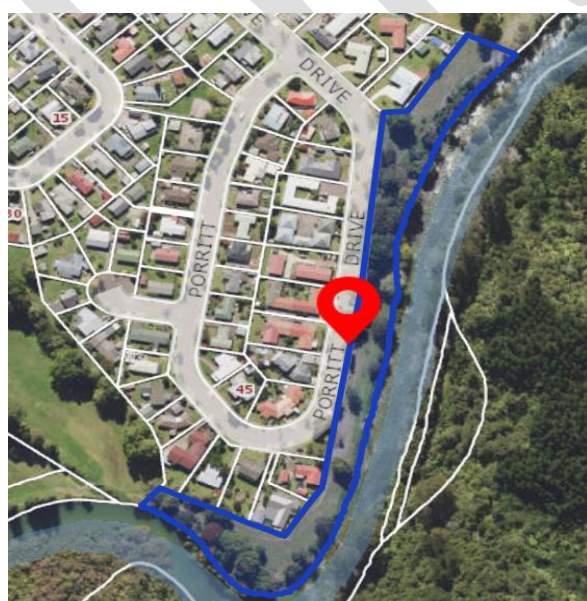
Based on the previous activity and the assessment undertaken it is recommended to restrict freedom camping at Prideaux Park.

Therefore, if the freedom camping area is extended within the proposed bylaw, as a restricted area, it is also recommended that the bylaw's statement of proposal also proposes an amendment to the Firmin Field reserve management plan as per the Reserves Act 1977, to ensure the bylaw and reserves management plan are consistent. The following restrictions are recommended:

- Freedom camping is only available in self-contained vehicles, behind Prideaux Park and the Bowling Club, and along the grassed boundary between the Bowling Club and the Prideaux field.
- Freedom camping is available at the Maurie Kjar Aquatic Centre carpark in self-contained vehicles only, between the hours of 4pm and 9am.
- Council may consider prior approval for the use of Prideaux Park grassed sports field for organised groups, upon consideration weather and ground condition.

Roy Weston Walk

Legal Description	Area (ha)	Reserve Category
Allot 552 Matata Parish	1.3378	Recreation Reserve



Site description

Roy Weston Walk is located along the western edge of the Tarawera River and provides a scenic walk between Firmin Field and Lyn Hartley Reserve.

The walk is a grassed reserve following the edge of the Tarawera River. The edge of the river in some places is lined with trees providing shade. There are a number of park benches for families to picnic.

This area is popular to locals and tourist alike, providing for a scenic view over the river where the white water section commences.

There are a few off street parking spaces along the southeast end of Porritt Drive to enable visitor to park while frequenting the location. There is also a gravel turning area with some parking on the reserve at the southern end of Porritt Drive.

This reserve forms part of a longer scenic walk following the river's edge.

The reserve is not fenced off, however small fences run across the reserve to reduce the ability to drive through the reserve area.

There are no public facilities at this reserve.

Freedom Camping Act Assessment

Assessment	Score	Comments
Protect the area	4	The esplanade along the river embankment has high value to the community, and is both culturally and naturally significant, requiring protection of the waterways.
Protect Health and Safety	3	This is very popular spot for family and children, particularly in summer. A footpath runs along the side of the road providing walkways and access to the reserve for the community. Trees reduce visibility of vehicles trying to access the reserve and could endanger pedestrian users. Limited off street parking is available for short-term users only. The roadside is narrow so parking and may create visibility restrictions for those using the roads or footpath around the reserve. This poses safety risk to pedestrians and other road users. There is no public toilets or facilities at this reserve.
Protect access	4	Porritt Drive is narrow and provides little room for on street parking or large vehicles. A few off street parks are available for short-term visitors. There is no vehicle access to this reserve. Driving over the concrete berm and footpath may cause damage over time. The reserve is planted with trees providing shade and reducing the ability for vehicle access.
Total Score	11	

Recommendation

This assessment against the criteria in the Act provides grounds for this site to be restricted or prohibited in a freedom camping bylaw.

The Reserve Management Plan for Roy Weston Walk does not provide for freedom camping; therefore, freedom camping is prohibited on the reserve under section 44(1) of the Reserve Act 1977. Inclusion of the reserve as a prohibited area within the bylaw will enable a consistent approach to freedom camping regulation on the reserve.

Based on this assessment, it is recommended Council propose to prohibit freedom camping on Roy Weston Walk and Porritt Drive.

Ruruanga Reserve

Legal Description	Area (ha)	Reserve Category
Allot 581 Matata Parish	0.7992	Recreation Reserve



Site description

Ruruanga Reserve is located along the northern edge of Glasgow Street, west of the Maurie Kaur Aquatic Centre.

The Ruruanga Stream flows through the reserve from the west before heading north into Prideaux Park. The area is grassed with trees providing a scenic area to visit and walk through.

There is no vehicle access to the Ruruanga Reserve.

No public facilities are available at this reserve.

Freedom Camping Act Assessment

Assessment	Score	Comments
Protect the area	4	The esplanade along the river embankment has high value to the community, and is both culturally and naturally significant, requiring protection.
Protect Health and Safety	1	No health and safety concerns due to limited access to foot traffic only.
Protect access	5	There is no vehicle access to Ruruanga Reserve. Access is likely to cause damage to the kerb and the grounds.

Total Score	10	
--------------------	----	--

Recommendation

This assessment against the criteria in the Act provides grounds for this site to be restricted or prohibited in a freedom camping bylaw.

The Reserve Management Plan for Ruruanga Reserve does not provide for freedom camping; therefore, freedom camping is prohibited on the reserve under section 44(1) of the Reserve Act 1977. Inclusion of the reserve as a prohibited area within the bylaw will enable a consistent approach to freedom camping regulation on the reserve.

Based on this assessment, it is recommended Council propose to prohibit freedom camping on Ruruanga Reserve.

Stoneham Walk

Legal Description	Area (ha)	Reserve Category
Part Allot 1546 Matata Psh	2.1626	Recreation Reserve
Lot 1 DPS 77805	5.6550	
Pt Lot 85 DPS 9663	1.5715	Esplanade Reserve
Part Allot 580 Matata Psh	2.6240	Recreation Reserve
Lot 86 DPS 9663	0.0501	Esplanade Reserve
Pt Allot 39 Matata Psh	0.007 hectares	Recreation Reserve





Site description

Stoneham Walk Reserve is located off Fenton Mill Road and runs between Bell Street and Valley Road. Stoneham Walk is sited in a shallow gully, through the centre of which flows the Ruruanga Stream. The gully runs roughly east to west.

Pedestrian access to the Walk is from Bell Street, Opunoke Drive, Valley Road, Blundell Avenue and Fenton Mill Road. Vehicle access is via Bell Street, Opunoke Drive and Blundell Avenue. Each of these access points are gated and locked to prevent vehicles access, except for maintenance and emergency services.

There is vehicle access and off street parking available on the south east edge of Stoneham Walk, off Fenton Mill Road, known as the five rocks carpark. The purpose of the carpark is to enable short-term parking for visitor walking through Stoneham Walk.

Stoneham Walk now consists of two areas either side of the Ruruanga Stream. Each side is of almost even proportion. The northern side runs adjacent to a residential housing area. The southern side runs along Fenton Mill Road for a short length, and then is bordered by land owned by Council and residential houses.

The Walk development incorporates a rose garden, stone bridge, sealed walkways, pedestrian bridges across the Rururanga Stream, and raised perennial gardens and a pergola.

The reserve has been extensively planted over the years and maintains a mixture of young and older trees. The reserve is a very scenic reserve popular with the local community and visitors.

Stoneham Walk is fenced with locked gates to prevent vehicle damage and access to the reserve.

The area is a designated dog exercise area.

No public facilities are available at this reserve.

Freedom Camping Act Assessment

Assessment	Score	Comments
Protect the area	5	The esplanade along the river embankment has high value to the community, and are culturally and naturally significant, requiring protection.
Protect Health and Safety	3	Stoneham walk is a popular spot for walking, picnics, wedding ceremonies and exercising the family dog. The introduction of vehicles would pose a health and safety risk due to the contour of the area and shared use without formed access ways.
Protect access	4	Short-term visitor parking is available off Fenton Mill Road for visitors. Freedom camping will limit capacity for the number regular visitor to Stoneham Walk. Stoneham reserve is fenced off with locked gates to prevent vehicle access.
Total Score	12	

Recommendation

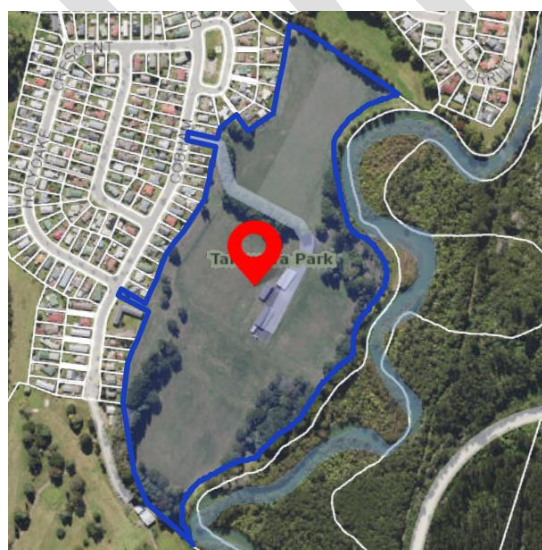
This assessment against the criteria in the Act provides grounds for this site to be restricted or prohibited in a freedom camping bylaw.

The Reserve Management Plan for Stoneham Walk Reserve does not provide for freedom camping; therefore, freedom camping is already prohibited on the reserve under section 44(1) of the Reserves Act 1977. Inclusion of the reserve as a prohibited area within the bylaw will enable a consistent approach to freedom camping regulation on the reserve.

Based on this assessment, it is recommended that Council propose to prohibit freedom camping on the Stoneham Walk Reserve and the parking area off Fenton Mill Drive, within a proposed bylaw.

Tarawera Park

Legal Description	Area (ha)	Reserve Category
Allot 505 Matata Psh	15.8077	Recreation Reserve



Site description

Tarawera Park Reserve is located off Cobham Drive to the south-east of Kawerau town centre. The Tarawera Reserve is bordered by residential housing to the west and the Tarawera River to the East. The northern end is bordered by Lyn Hartley Reserve and on the southern edge is the Kawerau Golf Course.

The reserve is a large grassed area with large trees around the boundaries, by the river and lining the tar sealed access way. The reserve includes the main rugby and soccer grounds, providing four full sized fields.

Within the Tarawera Park, there is a group of building providing the changing rooms, Sports Club and Gym. Surrounding the buildings is a large paved car parking around. During 9am – 5pm or organised events, the entrance gates are unlocked for the public which enable vehicles access to the parking area.

Underground storm water drain runs through this reserve.

The grassed areas is fenced off to protect the sports ground from vehicle damage.

The area is a designated on dog exercise area.

The toilet block at the reserve is kept locked unless specifically requested by Park users due to vandalism.

The Onepu Sports Club leases the Clubrooms and grounds to the East, West and South of the Club Rooms. This area is excluded from the assessment.

Freedom Camping Act Assessment

Assessment	Score	Comments
Protect the area	4	The esplanade along the river embankment has high value to the community, and is both culturally and naturally significant, requiring protection. This area is fenced off from other areas of the park. Designated parking areas are available to ensure damage to the sports field turf is minimised. These areas are fenced off from the car parking and clubrooms. Underground wastewater and water assets require protection from vehicles driving on the reserve.
Protect Health and Safety	3	The reserve attracts recreational users and children. Trees will reduce visibility of vehicles trying to access the reserve and could endanger pedestrian users. Large amounts of traffic during events raises health and safety risks to visitors. Tarawera Reserve is fenced off with locked gates to prevent vehicle access outside of these hours as a result of ongoing vandalism to the fields and fences.
Protect access	3	Carpark locked between 5pm and 9am. While there is significant parking available, capacity is limited during sporting or other organised events. Enabling freedom camping on this reserve would create concerns around capacity of parking.

		Designated parking areas are available to ensure damage to the sports field turf is minimised. These areas are fenced off from the car parking and clubrooms.
Total Score	10	

Note: Initial assessment relating to protecting access was not affected by the removal of amenity and economic factors, it was amended to better reflect the scoring system. The initial score did not correctly consider the cultural and natural significance of the river which places the score at 4 under the scoring system. Increased from 2

While not changing the assessment criteria for protecting access, this was amended to better reflect the scoring system. While there is fully formed access to the carpark the fields are fenced off. There is restricted access to the site which would score a 4, however damage to the site would not necessarily occur due the carpark area, so reduced to 3. Reduced from 4.

Recommendation

This assessment against the criteria in the Act provides grounds for this site to be restricted or prohibited in a freedom camping bylaw.

The Reserve Management Plan for Tarawera Park Reserve does not provide for freedom camping; therefore, freedom camping is already prohibited on the reserve under section 44(1) of the Reserves Act 1977. Inclusion of the reserve as a prohibited area within the bylaw will enable a consistent approach to freedom camping regulation on the reserve.

Based on this assessment, it is recommended that Council propose to prohibit freedom camping on the Tarawera Reserve (including the car park area), within a proposed bylaw.

River Road Reserve

Legal Description	Area (ha)	Reserve Category
Pt Lot 2 DPS 5883	2.2450	Recreation Reserve



Site description

River Road Reserve is a long thin strip of land located between Boyce Park (to the north) and Waterhouse Reserve (to the South). Incorrectly referenced in this map as Waterhouse Street Reserve as the two reserves are linked. It is bordered by the Tarawera River to the east and Tarawera High School to the west.

The reserve is undulating with a combination of river flats and steep banks. The reserve is largely grassed with mature trees.

No public facilities are available.

Underground storm water drain runs through this reserve.

The reserve is fenced off with locked gates to protect the reserve from vehicles damaging the grassed area.

Freedom Camping Act Assessment

Assessment	Score	Comments
Protect the area	5	The Tarawera River and esplanade along the river embankment has high value to the community, and is both culturally and naturally significant, requiring protection. Underground storm water assets require protection from vehicles driving on the reserve.
Protect Health and Safety	4	This area is used by pedestrians for recreational purposes such as walking their dogs and exercising. The introduction of vehicles would pose a health and safety risk due to the contour of the area, no formed access ways and shared use.
Protect access	4	There is no vehicle access to this reserve and no formed access ways. Each end is fenced to enable foot traffic only.
Total Score	13	

Recommendation

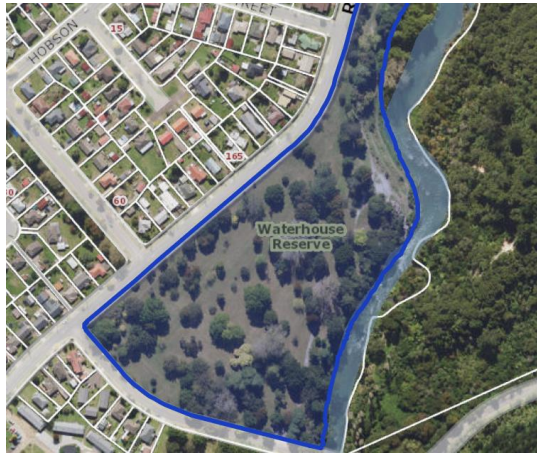
This assessment against the criteria in the Act provides grounds for this site to be restricted or prohibited in a freedom camping bylaw.

The Reserve Management Plan does not provide for freedom camping at River Road Reserve; therefore, freedom camping is prohibited on the reserve under section 44(1) of the Reserves Act 1977. Inclusion of the reserve as a prohibited area within the bylaw will enable a consistent approach to freedom camping regulation on the reserve.

Based on this assessment, it is recommended Council propose to prohibit freedom camping at the River Road Reserve.

Waterhouse Reserve

Legal Description	Area (ha)	Reserve Category
Pt Lot 2 DPS 5883	6.1835	Recreation Reserve



Site description

Waterhouse Reserve is located between Tarawera High School and Waterhouse Street. On the eastern edge of the reserve is the Tarawera River and to the west is River Road.

The reserve is a large grassed reserve with large trees providing shade and a scenic atmosphere. While the contour is largely flat, it becomes steep on the river edges. Natural bush has been retained along the river edges, which helps to provide a natural barrier for the steep areas.

There are large established trees throughout the reserve.

There is a small paved parking area on the southern end of the reserve of Waterhouse Street. This parking is available for short-term visitor to the areas utilising the reserve and river tracks for recreational purposes.

This can be a popular area with the development of the kayak course, judging platforms, walkways and spectator viewing areas.

The reserve has an unsealed vehicle access way used for maintenance or event requirements. However, the reserve is fenced off with locked gates to protect the reserve from damage.

A pedestrian track is formed along the riverbank, which forms part of the walkway from Tarawera Park through to the Waterwheel Heritage Park.

There are no public facilities available in this reserve, however the Firmin Field Reserve is directly across the road (Waterhouse Street).

Underground storm water drain runs through this reserve.

Freedom Camping Act Assessment

Assessment	Score	Comments
------------	-------	----------

Protect the area	5	The Tarawera River and esplanade along the river embankment has high value to the community, and is both culturally and naturally significant, requiring protection. Underground storm water assets require protection from vehicles driving on the reserve.
Protect Health and Safety	3	This area is used by pedestrians for recreational purposes such as walking their dogs and exercising. The introduction of vehicles would pose a health and safety risk, particularly due to the number of trees established within the reserve making parking and visibility more difficult.
Protect access	3	Sealed vehicle access is available off Waterhouse Street, however this is locked to monitor access and avoid damage. This access also provides for a small number of off street parking for short-term visitors to the reserve.
Total Score	11	

Recommendation

This assessment against the criteria in the Act provides grounds for this site to be restricted or prohibited in a freedom camping bylaw.

The Reserve Management Plan does not provide for freedom camping for Waterhouse Reserve; therefore, freedom camping is prohibited on the reserve under section 44(1) of the Reserves Act 1977.

The current freedom camping bylaw allows restricted freedom camping on the grass field by organised groups, where approved by Council.

Based on the previous bylaw and the assessment undertaken, it is recommended to restrict freedom camping at Waterhouse Reserve.

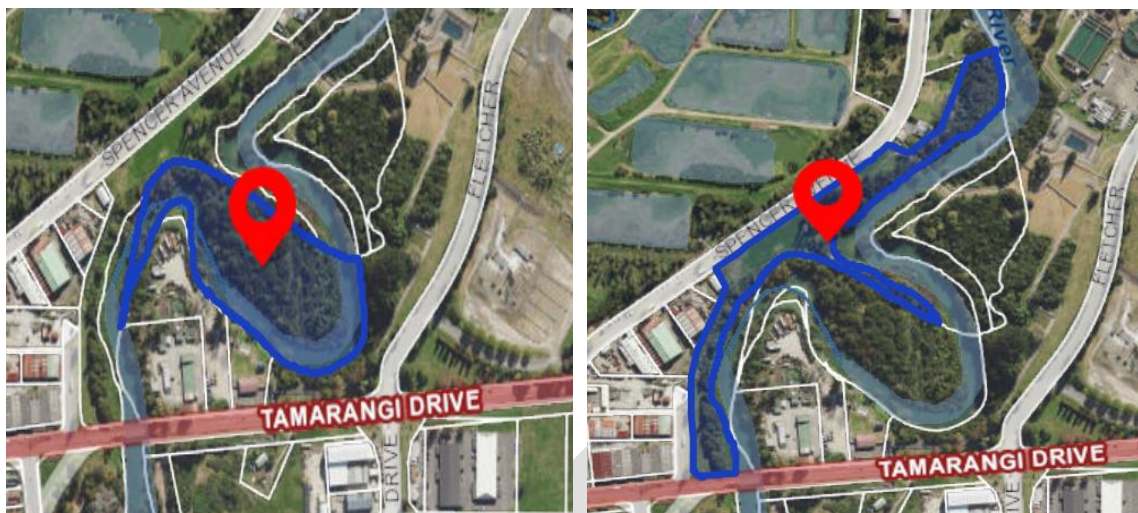
If this reserve is included within the proposed bylaw as a restricted area, it is also recommended that the bylaw's statement of proposal also proposes an amendment to the Waterhouse Street reserve management plan as per the Reserves Act 1977, to ensure the bylaw and reserves management plan are consistent. The following restrictions are recommended:

- Council will consider prior consent for organised groups where other permitted freedom camping areas are unlikely to be able to support the number of expected freedom campers.
- Freedom camping is only available to self-contained vehicles.
- All freedom campers must be a minimum of 10 metres from the river bank.

Waterwheel Heritage Park

Legal Description	Area (ha)	Reserve Category
Lot 1 DP 395904	2.9079	Recreation Purposes - Land Held for Conservation Purposes

Sec 1 SO 406753	2.5957	Recreation Purposes - Land Held for Conservation Purposes
-----------------	--------	-----------------------------------------------------------------



Site description

Waterwheel Heritage Park is located between Spencer Avenue and the Tarawera River. The reserve is bordered by Tamarangi Drive to the south, runs behind the commercial properties along Spencer Avenue and stops behind the Council Dog Pound. Tarawera River runs along the eastern edge.

The reserve is a large grassed reserve with large trees and some natural bush along the rivers each.

The reserve is fenced off with locked gates.

An underground storm water drain runs through this reserve.

Until recently, this reserve was leased to the Waterwheel Historic Trust which installed an operational waterwheel. The site was to be used for restoring historic equipment for tourists and training students.

No public facilities are available.

Freedom Camping Act Assessment

Assessment	Score	Comments
Protect the area	4	The Tarawera River and esplanade along the river embankment has high value to the community, and is both culturally and naturally significant, requiring protection.
Protect Health and Safety	1	Park is low use and is isolated. There is no boundary along the river edge, which has a steep bank to the river.
Protect access	3	The reserve is fenced and has no formed access or formalised parking area.
Total Score	8	

Note: Initial assessment relating to protecting access was not affected by the removal of amenity and economic factors, it was amended to better reflect the scoring system. The initial score was inconsistent with other assessments of the river. Reduced from 5.

Recommendation

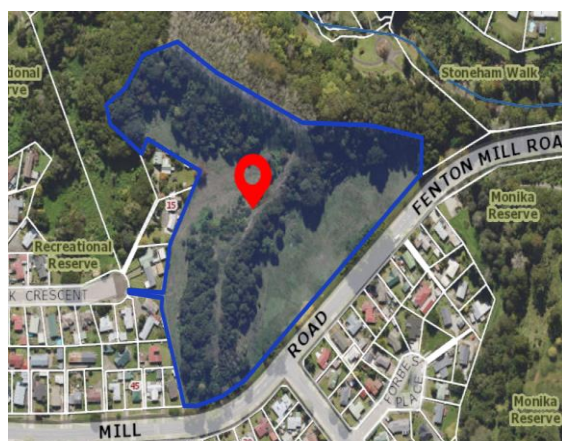
This assessment against the criteria in the Act does not support the restriction or prohibition of this site in the freedom camping bylaw.

The Reserve Management Plan does not provide for freedom camping on Waterwheel Heritage Park; therefore, freedom camping is prohibited on the reserve under section 44(1) of the Reserves Act 1977.

Based on this assessment, it is recommended that Council does not include this site in the bylaw and freedom camping on the reserve remains prohibited under s44 of the Reserves Act 1977.

Stock Pound (Yet to be officially named)

Legal Description	Area (ha)	Reserve Category
Lot 2 DPS 77805	5.439	Recreation Reserve



Site description

Kawerau District Council recently completed a reserve swap which resulted in the former Stock Pound (yet to be officially named), being newly designated as a recreational reserve. This area sits to the west of Fenton Mill Road and has foot access from Kirk Crescent and Fenton Mill Road.

The previous stock pound, is a large flat grassed area with a ridge running from north to south. The undulating ridge is covered in a mix of exotic and native trees.

This reserve is currently fenced and gated, providing no vehicle access, except for maintenance. There is no off street parking available and the large grass verge running along the front of the reserve is fenced off to prevent vehicle damage.

This reserve will subject of future development as a recreational reserve enabling a community space for all ages.

No public facilities are available.

Freedom Camping Act Assessment

Assessment	Score	Comments
Protect the area	3	This reserve has some cultural significance, which would be protected in development. Some native trees are on this reserve, however it is largely exotic trees. This area is set for future development as a community space for families of all ages.
Protect Health and Safety	1	No significant health and safety concerns. No public facilities on site, which may create a health and safety risk, if waste is inappropriately disposed of.
Protect access	5	The reserve is fenced off and gated, providing no direct access. A kerb and concrete footpath runs along the roadside of this reserve and enabling access may damage this infrastructure.
Total Score	9	

Recommendation

This assessment against the criteria in the Act provides grounds for this site to be restricted or prohibited in a freedom camping bylaw.

The Reserve Management Plan is being updated to include the former Stock Pound; it is proposed this area will not enable freedom camping as Council wish to develop it into a community friendly outdoor space. Where this is approved, freedom camping will be prohibited on the reserve under section 44(1) of the Reserves Act 1977.

Based on this assessment, it is recommended that Council propose to prohibit freedom camping on the former Stock Pound Reserve, within a proposed bylaw.

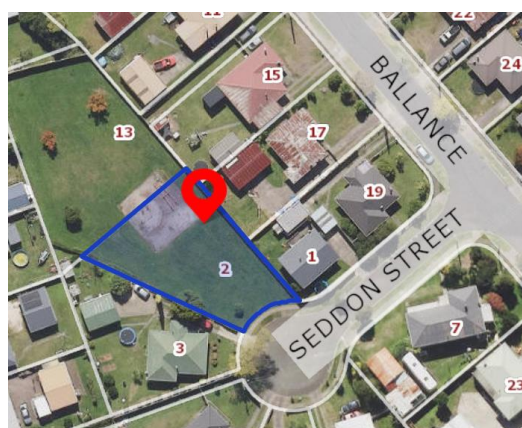
8.2 Recreation Reserves – Neighbourhood Reserves

Neighbourhood reserves are generally smaller and less developed than important reserves. They generally offer informal recreational opportunities and may have playgrounds and other active play areas for children, as well as some trees.

The primary purpose of neighbourhood reserves is to provide a place for casual or passive recreational opportunities for neighbouring residents. Council's objectives are to develop and maintain neighbourhood reserves in a way that will encourage casual and passive recreation and active child's play, and to retain these reserves as an open space for the benefit of all users. Development may include tree planting, playground construction, drainage, contouring and fencing.

Ballance/Seddon Street Reserve

Legal Description	Area (ha)	Reserve Category
Lot 118 DPS 4502	0.1329	Recreation Reserve
Lot 122 DPS 4502	0.0800	Recreation Reserve



Site description

This neighbourhood reserve is located off Seddon Street to the south of the town centre, but centrally located within Kawerau. The reserve is surrounded by residential properties from Seddon, Ballance and Onslow Streets.

The reserve can be accessed off Seddon Street. It is a small flat grassed reserve with a few small trees and a small playground.

The reserve contains no off street parking and has walking access only from Seddon Street. The reserve is fenced.

There are no public facilities in this reserve.

Freedom Camping Act Assessment

Assessment	Score	Comments
Protect the area	3	This is an important recreational space (open green space) within a built up neighbourhood. Allowing freedom camping will take away the experience of a nice open green space. Vehicles may damage the grassed area and recreational play space.
Protect Health and Safety	3	Introduction of vehicle into a space with no access and parking facilities will present a health and safety risk to users.
Protect access	5	No vehicle access or parking available. Vehicles would have to cross the kerb which may cause damage. Vehicular access will reduce the suitability of the reserve to be used for neighbourhood kids.
Total Score	11	

Recommendation

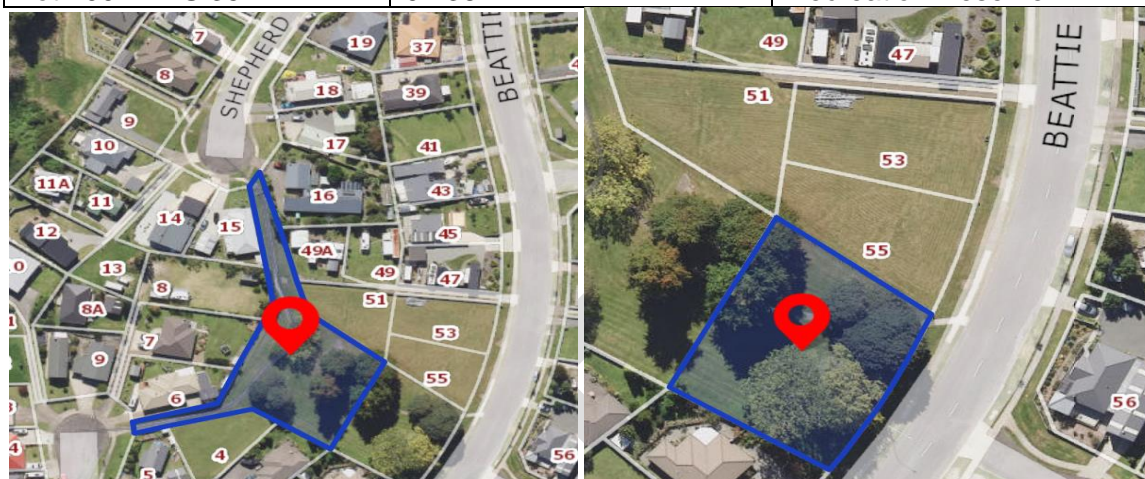
This assessment against the criteria in the Act provides grounds for this site to be restricted or prohibited in a freedom camping bylaw.

The Reserve Management Plan does not provide for freedom camping on neighbourhood reserves; therefore, freedom camping is prohibited on the reserve under section 44(1) of the Reserves Act 1977.

Based on this assessment, it is recommended Council propose to prohibit freedom camping at the Balance/Seddon Street Reserve.

Beattie/Shepard Road Reserve

Legal Description	Area (ha)	Reserve Category
Lot 239 DPS 35475	0.2593	Recreation Reserve
Lot 1004 DPS 35472	0.1387	Recreation Reserve



Site description

This neighbourhood reserve is located off Beattie Avenue to the south west of Kawerau. The reserve is surround by residential properties. Currently to the north of the reserve, three sections remain undeveloped.

This neighbourhood reserve has pedestrian access from Beattie Road, Doug Wilson Drive and Shepard Road. The reserve is a small grassed area with well-developed trees providing a shaded pathed walkway to adjoin streets.

There is no off street parking available and there is a small fence restricting access to the grass area to prevent damage.

There are no public facilities in this reserve.

Freedom Camping Act Assessment

Assessment	Score	Comments
Protect the area	3	This is an important recreational space (open green space) within a built up neighbourhood. Allowing freedom camping will take away the experience of an open green space. Vehicles may damage the grassed area and the roots of the trees.
Protect Health and Safety	3	The reserve is used by the neighbours for walking, dog exercise and as access to nearby streets. Introduction of vehicle into a space with no access and parking facilities will provide a health and safety risk. Navigating the trees will create an extra risk for vehicles and pedestrians.
Protect access	5	No vehicle access or parking available. Vehicle would have to cross the kerb, which may cause damage.

		Vehicular access will reduce the suitability of the reserve to be used for neighbourhood kids.
Total Score	11	

Recommendation

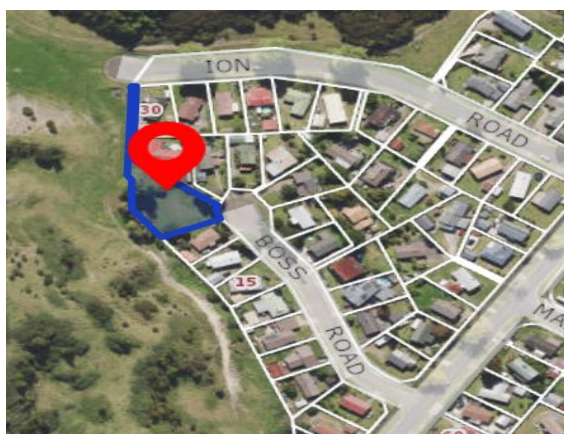
This assessment against the criteria in the Act provides grounds for this site to be restricted or prohibited in a freedom camping bylaw.

The Reserve Management Plan does not provide for freedom camping on neighbourhood reserves; therefore, freedom camping is prohibited on the reserve under section 44(1) of the Reserves Act 1977.

Based on this assessment, it is recommended Council propose to prohibit freedom camping at the Beattie/Sheppard Road Reserve.

Boss Road Reserve

Legal Description	Area (ha)	Reserve Category
Allot 1318 Matata Psh	0.1643	Recreation Reserve



Site description

This neighbour reserve is located off Boss Road which is to the western edges of Kawerau. The reserve is neighboured by a couple of residential properties and backs onto farmland.

This neighbourhood reserve has pedestrian access only, from Boss Street. The reserve is a very small grassed area with well-developed trees providing a shade. There is open space for playing with a park bench at the rear of the reserve.

There is no off street parking available and there is a small fence with locked gate restricting access to the grass area to prevent damage.

There are no public facilities in this reserve.

Freedom Camping Act Assessment

Assessment	Score	Comments
Protect the area	3	This is an important recreational space (open green space) within a built up neighbourhood.

		The space is small, there is no capacity to allow freedom camping while maintaining the recreational opportunities and visitor experience of an open green space. Vehicles or camping may damage the grassed area. The reserve is small and slightly sloped.
Protect Health and Safety	2	The reserve has low use. Introduction of vehicle into a space with no access and parking facilities will provide a health and safety risk to other users.
Protect access	5	No vehicle access or parking available. Vehicle would have to cross the kerb, which may cause damage. Vehicular access will reduce the suitability of the reserve to be used for neighbourhood kids.
Total Score	10	

Note: While the initial assessment of Boss Road Reserve did not consider amenity factors, it also did not consider the importance of the recreational space within a built up area which provides recreational opportunities and open green space locally. Increased from 2.

Recommendation

This assessment against the criteria in the Act provides grounds for this site to be restricted or prohibited in a freedom camping bylaw.

The Reserve Management Plan does not provide for freedom camping on neighbourhood reserves; therefore, freedom camping is still prohibited on the reserve under section 44(1) of the Reserves Act 1977.

Based on this assessment, it is recommended Council propose to prohibit freedom camping at the Boss Road Reserve.

Cobham Drive Reserve

Legal Description	Area (ha)	Reserve Category
Lot 156 DPS 9932	0.2712	Recreation Reserve



Site description

This neighbourhood reserve is located on Cobham Drive and encircled by Holland Crescent, which is towards the southern end of Kawerau.

This neighbourhood reserve has pedestrian access from Holland Crescent and Cobham Drive. The reserve is a grassed area with a large children's playground and basketball hoop. There are park benches available.

The reserve is fenced off.

There is two off street carparks. These are not sealed and one is grassed.

There are no public facilities in this reserve, other than a rubbish bin.

Freedom Camping Act Assessment

Assessment	Score	Comments
Protect the area	3	This is an important recreational space (open green space) within a built up neighbourhood, providing a playground for local children. Allowing freedom camping will take away from the visitor experience of an open green space. Vehicles or camping may damage the grassed area.
Protect Health and Safety	3	The playground on the reserve attracts recreational users and children. Freedom camping and vehicle movements on the reserve are likely to pose a safety risk to other users of the playground and site.
Protect access	4	There is no access to the reserve itself (fenced). There is a formed vehicle access, which only services one of the two parking spots. The second spot would require a vehicle to drive over the concrete kerb and park on the grass, which may cause damage. The road is very narrow. Parking on the roadside may cause blockage of the surround roading network.
Total Score	10	

Note: This assessment of protecting the area, removed the consideration of amenity, however the initial assessment had not considered the importance of the recreational space within a built up area which provides recreational opportunities and open green space locally. Increased from 2.

While not changing the assessment criteria for protecting health and safety, this was amended, taking into account the fence which does provide some protection to the vulnerable. This was reduced from 4, and removal of the fence would increase the score back to 4.

Recommendation

This assessment against the criteria in the Act provides grounds for this site to be restricted or prohibited in a freedom camping bylaw.

The Reserve Management Plan does not provide for freedom camping on neighbourhood reserves; therefore, freedom camping is prohibited on the reserve under section 44(1) of the Reserves Act 1977.

Based on this assessment, it is recommended that Council propose to prohibit freedom camping on the Cobham Drive Reserve and the adjacent roads (Holland Crescent).

Fraser Street/River Road Reserve

Legal Description	Area (ha)	Reserve Category
Pt Lot1 DPS 5882	1.09	Recreation Reserve



Site description

This reserve is located south of Fraser Street, behind Kawerau North School and next to the southern edge of Monika Lanham Reserve.

This neighbourhood reserve is a large grassed reserve used for the Kawerau Urban Food Garden.

There are no off street parking available and no vehicle access to the reserve. The only access is pedestrian access from River Road near the overflow stream, just south of the Fraser Street Entrance.

There are no public facilities in this reserve.

Freedom Camping Act Assessment

Assessment	Score	Comments
Protect the area	3	The reserve is used for the Kawerau Urban Food Garden and backs on to the school grounds.
Protect Health and Safety	2	The reserve has low to medium use, however enabling freedom camping would create health and safety concerns for all uses due to access.
Protect access	5	There is no vehicle access to the Fraser Street Reserve. The only access is by foot from River Road along the side of a small stream or through the rear of the Kawerau North School off Cobham Drive. Any vehicle access would need to be across private land or Public School property, with the risk of damaging private land or school property.
Total Score	10	

Note: The initial assessment did not take into account amenity or economic factors, however while the Urban Food Garden is important to the community, it may not reach the level of significance under the scoring system. Reduced from 4.

While not changing the assessment criteria for protecting health and safety, this was amended, to better reflect the scoring system. Initial assessment failed to take into account what may occur if a vehicle accessed

the site. With no roadway and no expectation of vehicles in the area this would pose a health and safety risk. Increased from 1.

Recommendation

This assessment against the criteria in the Act provides grounds for this site to be restricted or prohibited in a freedom camping bylaw.

The Reserve Management Plan does not provide for freedom camping on neighbourhood reserves; therefore, freedom camping is prohibited on the reserve under section 44(1) of the Reserves Act 1977.

Based on this assessment, it is recommended Council propose to prohibit freedom camping on the Fraser Street Reserve.

Hadley Street Reserve

Legal Description	Area (ha)	Reserve Category
Lot 96 DPS 27245	0.2300	Recreation Reserve



Site description

Hadley Street Reserve is located between Hadley Street and Windley Place. This reserve is bordered by residential properties on all sides.

This reserve is a small grassed reserve with a couple of large trees providing shade in a couple of locations. There is a park bench along the side of the paved walking track between the two streets.

There are no off street parking available and no vehicle access to the reserve. The reserve has been fenced off to enable pedestrian access only.

There are no public facilities in this reserve.

Freedom Camping Act Assessment

Assessment	Score	Comments
Protect the area	3	This is an important local recreational space (open green space) within a built up neighbourhood.

		<p>The space is small, and surrounded by residential properties. There is no capacity to allow freedom camping while maintaining the recreational opportunities and visitor experience of an open green space, within the current setting.</p> <p>Vehicles or freedom camping may damage the grassed area.</p>
Protect Health and Safety	3	<p>The reserve is used by the neighbours for walking, dog exercise and as access to nearby streets.</p> <p>Introduction of vehicle into a space with no access and parking facilities may provide a health and safety risk.</p>
Protect access	5	<p>There is no off-street parking or formed vehicle access onto the reserve. Vehicles parked on the narrow cul-de-sac on both ends may block the surrounding roading network and property access.</p> <p>A concrete berm and footpaths runs along the edge of the grassed area by the road and vehicle access would require driving over the kerb, potentially causing damage.</p> <p>Vehicle access may result in this being used as a thoroughfare causing damage to the grassed area.</p>
Total Score	11	

Note: This assessment of protecting the area, removed the consideration of amenity, however the initial assessment had not considered the importance of the recreational space within a built up area which provides recreational opportunities and open green space locally. Increased from 2.

Recommendation

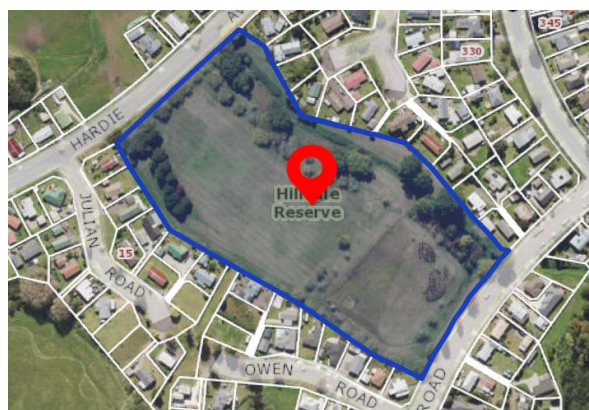
This assessment against the criteria in the Act provides grounds for this site to be restricted or prohibited in a freedom camping bylaw.

The Reserve Management Plan does not provide for freedom camping on neighbourhood reserves; therefore, freedom camping is prohibited on the reserve under section 44(1) of the Reserves Act 1977.

Based on this assessment, it is recommended Council propose to prohibit freedom camping on the Fraser Street Reserve.

Hilldale Reserve

Legal Description	Area (ha)	Reserve Category
Lot 116 DPS 34299	4.2753	Recreation Reserve



Site description

Hilldale Reserve is located between Hardie Avenue and Beattie Avenue and has residential properties extending along the northeast and southwest sides.

This reserve is a passive reserve and is the only authorised reserve in which golf practice is allowed. A children's playground is located in the north-western corner off Hardie Road. This reserve is also a designated dog walking area, excluding the playground area.

This reserve forms part of the storm water system with the overflow drain flowing along the northeast boundary.

Due to high water table in the area, the Hilldale reserve may become water logged during rain events or over winter periods. This poses a health and safety issue to users of the reserve.

Vehicle entrance have been established of both Hardie and Beattie Road, however the reserve is fenced off and have locked gates. Access is restricted to prevent damage to the grassed reserve, particularly in the wetter months.

There are no public facilities in this reserve.

Freedom Camping Act Assessment

Assessment	Score	Comments
Protect the area	3	This is an important recreational space (open green space) within a built up neighbourhood, providing recreational opportunities locally. The reserve is used by the neighbours for walking, dog exercise and as access to nearby streets. Vehicles may damage the grassed area. Due to the high water table, this area can get wet, which would result in excessive damage.
Protect Health and Safety	3	Introduction of vehicle into a space with no access and parking facilities, may provide a health and safety risk to other users.

		The community are allowed to play golf on this reserve, this places an health and safety risk to freedom campers and their vehicles.
Protect access	4	While access ways have been developed the reserve is fenced and gated to prevent vehicle access. There is no off-street parking or formed vehicle paths within the reserve. Vehicle access may result in this being used as a thoroughfare causing damage to the grassed area.
Total Score	10	

Note: This assessment of protecting the area, removed the consideration of amenity, however the initial assessment had not considered the importance of the recreational space within a built up area which provides recreational opportunities and open green space locally. Increased from 2.

Recommendation

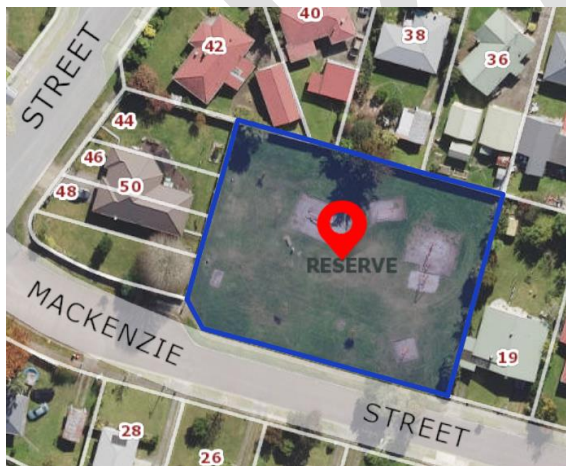
This assessment against the criteria in the Act provides grounds for this site to be restricted or prohibited in a freedom camping bylaw.

The Reserve Management Plan does not provide for freedom camping on neighbourhood reserves; therefore, freedom camping is prohibited on the reserve under section 44(1) of the Reserves Act 1977.

Based on this assessment, it is recommended Council propose to prohibit freedom camping on the Hildale Reserve.

MacKenzie Street Reserve

Legal Description	Area (ha)	Reserve Category
Lot 58 DPS 7302	0.2412	Recreation Reserve



Site description

This neighbourhood reserve is located on MacKenzie Street and has residential properties on three sides. This reserve has limited trees around the outside of the reserve. The trees along the front are small and still developing.

The reserve is a grassed area with five playground areas dotted across the reserve and a park bench.

Pedestrian access is only available from MacKenzie Street. There is no formed vehicle access to the reserve. No off street parking is available and MacKenzie Street is narrow, making parking on the roadside restrictive.

There are no public facilities in this reserve, except for a rubbish bin.

Freedom Camping Act Assessment

Assessment	Score	Comments
Protect the area	3	This is an important recreational space (open green space) within a built up neighbourhood, providing a playground for local children. The space is small, and there is no capacity to allow freedom camping while maintaining the recreational opportunities and visitor experience of an open green space and playground. Vehicles may damage the grassed area.
Protect Health and Safety	3	The playground on the reserve is set up to attract families with young children. Camping and vehicle movements on the reserve are likely to pose a safety risk to other users of the playground and site.
Protect access	5	There is no off-street parking or formed access into this reserve. A concrete berm and footpaths runs along the edge of the grassed area by the road and vehicle access would require driving over the kerb, potentially causing damage. Vehicles parked on the narrow road, may block easy access of the surrounding roading network.
Total Score	11	

Note: This assessment of protecting the area, removed the consideration of amenity, however the initial assessment had not considered the importance of the recreational space within a built up area which provides recreational opportunities and open green space locally. Increased from 2.

Recommendation

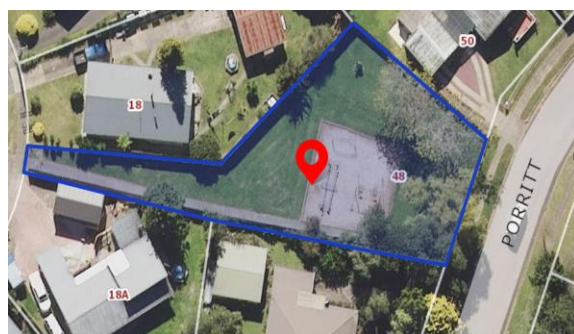
This assessment against the criteria in the Act provides grounds for this site to be restricted or prohibited in a freedom camping bylaw.

The Reserve Management Plan does not provide for freedom camping on neighbourhood reserves; therefore, freedom camping is prohibited on the reserve under section 44(1) of the Reserves Act 1977.

Based on this assessment, it is recommended Council propose to prohibit freedom camping on the MacKenzie Reserve.

Porritt Drive Reserve

Legal Description	Area (ha)	Reserve Category
Allot 528 Matata Parish	0.1021	Recreation Reserve



Site description

Porritt Reserve is located on the eastern side of Porritt Drive and runs between Porritt Drive and Ward Street. This reserve is surrounded by residential properties.

Porritt Reserve has a playground located largely in the centre of the reserve, with a park bench. There are a few trees in the small reserve which would limit vehicle access as it would risk damaging to the playground or tree roots.

Pedestrian access is available from Porritt Drive and Ward Street with a pathed footpath covering the length of the reserve.

No off street parking is available at this reserve and these roads are narrow making them unsuitable to longer-term parking. There is no vehicle access from either end of the reserve, with Ward Street entrance being too narrow to provide the stand width driveway. Fencing is in place on both ends of the reserve to prevent vehicle access.

There are no public facilities in this reserve, except for a rubbish bin.

Freedom Camping Act Assessment

Assessment	Score	Comments
Protect the area	3	This is an important recreational space (open green space) within a built up neighbourhood, providing a playground for local children. The space is small, and surrounded by residential properties. There is no capacity to allow freedom camping while maintaining the recreational opportunities and visitor experience of an open green space and playground. Vehicles or camping may damage the grassed area.
Protect Health and Safety	4	The playground on the reserve is set up to attract families with young children. Limited space within the reserve to manoeuvre a vehicle will pose a safety risk to other users of the reserve.
Protect access	5	There is no off-street parking or formed access into this reserve. A concrete berm and footpaths runs along the edge of the grassed area by the road and vehicle access would

		require driving over the kerb, potentially causing damage. Vehicles parked on the narrow road, may block easy access of the surrounding roading network.
Total Score	12	

Recommendation

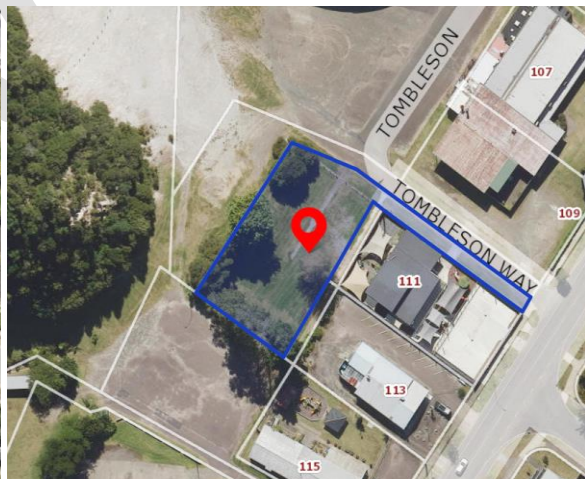
This assessment against the criteria in the Act provides grounds for this site to be restricted or prohibited in a freedom camping bylaw.

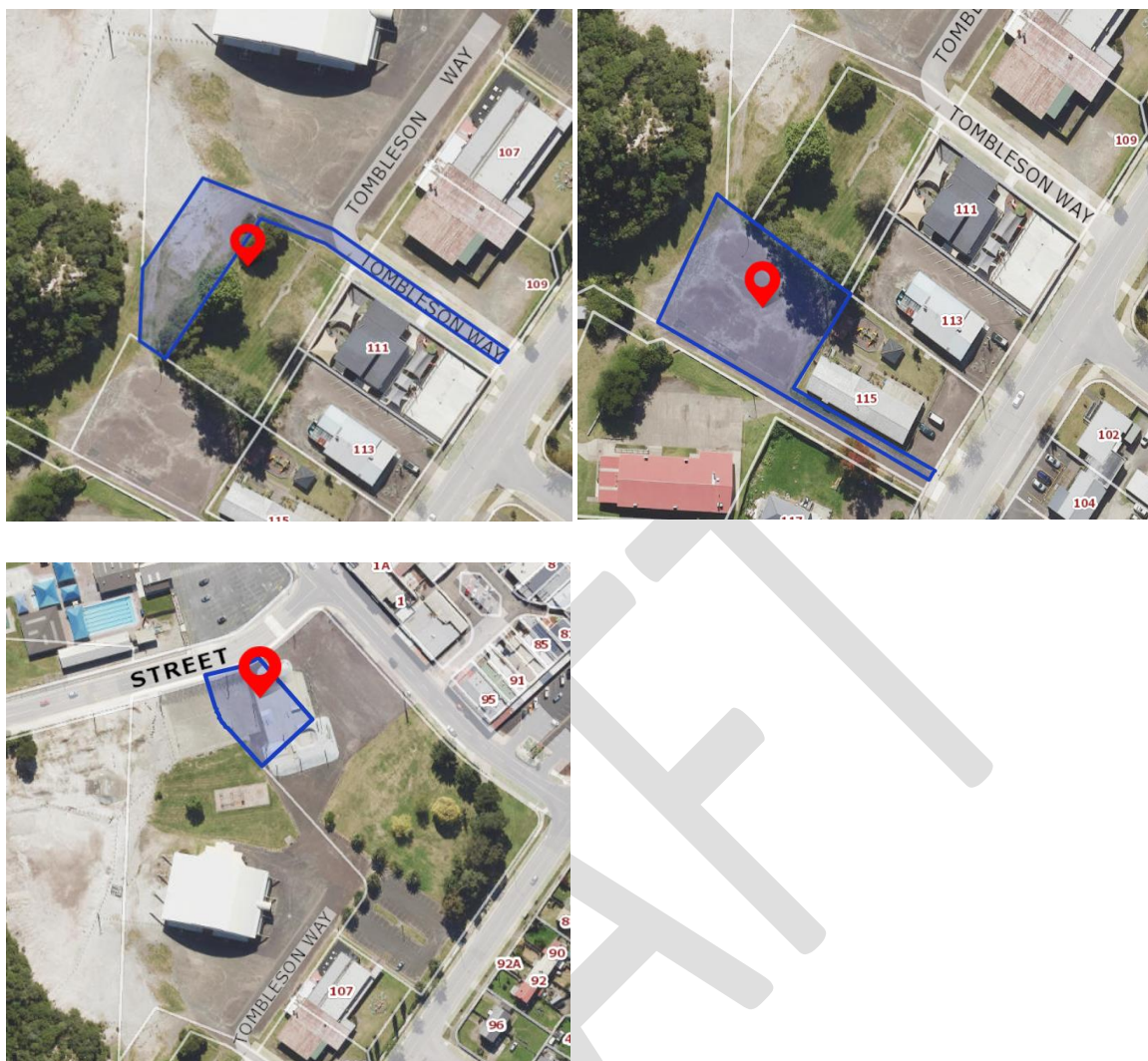
The Reserve Management Plan does not provide for freedom camping on neighbourhood reserves; therefore, freedom camping is prohibited on the reserve under section 44(1) of the Reserves Act 1977.

Based on this assessment, it is recommended Council propose to prohibit freedom camping on the Porritt Reserve.

Recreation Centre Reserve

Legal Description	Area (ha)	Reserve Category
Part Lot 3 DPS 5500	1.3441	Recreation Reserve
Part Allot 501 Parish of Matata	0.0080	
Lot 1 DPS 60987	0.1760	Recreation Reserve
Lot 2 DPS 60987	0.1293	Recreation Reserve
Allot 502 Matata Psh	0.1691	Carpark Reserve
Lot 1 DPS 29708	0.1392	Recreation Reserve





Site description

The Recreation Centre Reserve is located between Glasgow Street and Tombleson Way and is home to the Ron Hardie Recreation Centre. This reserve sits to the north-west of the Cosmopolitan Club (Onslow Street) and backs onto Monika Lanham Reserve to the west.

This reserve incorporates a basketball court, playground, the Ron Hardie Recreation Centre and a sealed parking area. A small area of this reserve is grassed.

Directly next to this reserve, is approximately 1000m² of geothermally active land. Some steam comes through vents in the ground and a sulphur smell is evident. While the area is not considered dangerous and is not hot, there is some unpredictability and as a result this area is surrounded by a low fence to discourage entry.

Geothermal gases can be dangerous at high concentrations.

Vehicle access is available from Onslow Street and the reserve has a large paved area with unmarked parking available.

There are no public facilities in this reserve, except for a rubbish bin.

Underground storm water drain runs through this reserve.

Freedom Camping Act Assessment

Assessment	Score	Comments
Protect the area	3	The Recreation Centre sits within this reserve. This is an important recreational facility available to the community. Freedom camping may reduce the visitor experience due to the limited capacity for parking. Underground storm water assets require protection from vehicles driving on the reserve.
Protect Health and Safety	4	Geothermal gases can be dangerous when found in high concentrations, this makes freedom camping in this area unsuitable for tenting and gas levels should be monitored if allowing self-contained vehicle. Unmarked parking creates a health and safety risk to other users. A playground, basketball court, skate park and bmx track are all within this area. This may create a health and safety risk as vehicle move around in the vicinity of the parks.
Protect access	2	Vehicle access and off-street parking is available, however this is not marked. The grassed area off Thomlinson Way is fenced off and cannot be used for parking.
Total Score	9	

Recommendation

This assessment against the criteria in the Act provides grounds for this site to be restricted or prohibited in a freedom camping bylaw.

The Reserve Management Plan does not provide for freedom camping on neighbourhood reserves; therefore, freedom camping is prohibited on the reserve under section 44(1) of the Reserves Act 1977.

Although previously enabled with Council consent, this location was very seldom used or requested for freedom camping. There is an unpredictability of geothermal activity and the closeness of this area to active geothermal land, gives rise to some health and safety concerns.

Based on this assessment, it is recommended, that Council prohibit freedom camping at Recreation Centre Reserve.

Robinson Street Reserve

Legal Description	Area (ha)	Reserve Category
Lot 106 DPS 3393	0.1110	Recreation Reserve



Site description

This neighbourhood reserve is encircled by Robinson Street. This reserve is a grassed reserve with a central playground with three trees located on in the north and south eastern corners. There is one park bench located under the trees.

This neighbourhood reserve has pedestrian access from Robinson Street.

There is no off street parking at this reserve and the road surrounding the reserve is narrow, with one half being only a single lane. There is no formed access way onto the reserve.

There are no public facilities in this reserve, other than a rubbish bin.

Freedom Camping Act Assessment

Assessment	Score	Comments
Protect the area	3	This is a local recreational space (open green space) within a built up neighbourhood, providing a playground for local children. The space is small, and surrounded by residential properties. There is no capacity to allow freedom camping while maintaining the recreational opportunities and visitor experience of an open green space and playground. Vehicles or freedom camping may damage the grassed area.
Protect Health and Safety	3	The playground on the reserve attracts recreational users and children. Camping and vehicle movements on the reserve are likely to pose a safety risk to other users.
Protect access	4	A concrete berm runs along the edge of the grassed area by the road and vehicle access would require driving over the kerb, potentially causing damage. The road is very narrow. Parking on the roadside may cause blockage of the surrounding road network. Access to the site will impact on families using the playground.

Total Score	10	
--------------------	-----------	--

Note: This assessment of protecting the area, removed the consideration of amenity, however the initial assessment had not considered the importance of the recreational space within a built up area which provides recreational opportunities and open green space locally. Increased from 2.

While not changing the assessment criteria for protecting health and safety, this was amended, taking into account the fence which does provide some protection to the vulnerable. This was reduced from 4, and removal of the fence would increase the score back to 4.

Recommendation

This assessment against the criteria in the Act provides grounds for this site to be restricted or prohibited in a freedom camping bylaw.

The Reserve Management Plan does not provide for freedom camping on neighbourhood reserves; therefore, freedom camping is prohibited on the reserve under section 44(1) of the Reserves Act 1977.

Based on this assessment, it is recommended Council propose to prohibit freedom camping on the Robinson Street Reserve and Robinson Street.

Tuwharetoa Road Reserve

Legal Description	Area (ha)	Reserve Category
Lot 40 DPS 26873	0.1445	Recreation Reserve



Site description

Tuwharetoa Road Reserve is located off the south side of Tuwharetoa Road. The reserve has pedestrian access from both Tuwharetoa Road and Hahuru Road. The reserve has a playground and park bench attracting families. There are a couple of young trees planted to provide shade in the future.

There are no public facilities in this reserve, except for a rubbish bin by the park.

The reserve is fully fenced off, allowing pedestrian access but not vehicles, protecting both users of the reserve and protecting the grass from damage from vehicle.

There is no off street parking.

Freedom Camping Act Assessment

Assessment	Score	Comments
Protect the area	3	This is a local recreational space (open green space) within a built up neighbourhood, providing a playground for local children. The space is small, and surrounded by residential properties. There is no capacity to allow freedom camping while maintaining the recreational opportunities and visitor experience of an open green space and playground.
Protect Health and Safety	3	The playground on the reserve attracts recreational users and children. Vehicle movements on the reserve are likely to pose a safety risk to other users. No public facilities may create additional health and safety issues.
Protect access	5	There is no off-street parking and is currently fenced off to protect the area. A concrete kerb and footpath runs along the road edge of the reserve and concrete footpaths are throughout the reserve. Vehicle access would require driving over the kerb, and footpaths potentially causing damage.
Total Score	11	

Note: This assessment of protecting the area, removed the consideration of amenity, however the initial assessment had not considered the importance of the recreational space within a built up area which provides recreational opportunities and open green space locally. Increased from 2.

While not changing the assessment criteria for protecting health and safety, this was amended, taking into account the fence which does provide some protection to the vulnerable. This was reduced from 4, and removal of the fence would increase the score back to 4.

Recommendation

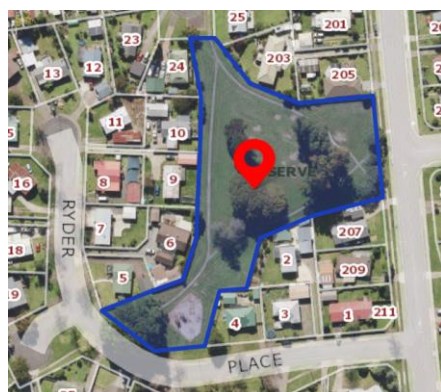
This assessment against the criteria in the Act provides grounds for this site to be restricted or prohibited in a freedom camping bylaw.

The Reserve Management Plan does not provide for freedom camping on neighbourhood reserves; therefore, freedom camping is prohibited on the reserve under section 44(1) of the Reserves Act 1977.

Based on this assessment, it is recommended Council propose to prohibit freedom camping on the Tuwharetoa Road Reserve.

Valley Road/Ryder Place Reserve

Legal Description	Area (ha)	Reserve Category
Lot 85 DPS 30067	0.7924	Recreation Reserve



Site description

Valley Road and Ryder Place reserve is located on the northern side of Ryder Place. This reserve is a grassed reserve with well-developed trees spread throughout the reserve. There are paved walkways throughout the reserve leading to the three access points, being Valley Road, Ryder Place and Syme Crescent.

There is a playground for families directly of the Ryder Place entrance.

There are no public facilities in this reserve, except for a rubbish bin by the park.

The reserve is fully fenced off, allowing pedestrian access, but not vehicles, protecting both users of the reserve and protecting the grass from damage from vehicle.

There is no off street parking.

Freedom Camping Act Assessment

Assessment	Score	Comments
Protect the area	3	This is a local recreational space (open green space) within a built up neighbourhood, providing a playground for local children. There is no capacity to allow freedom camping while maintaining the recreational opportunities and visitor experience of an open green space and playground. Vehicles may damage the grassed area.
Protect Health and Safety	3	The playground on the reserve attracts recreational users and children. Vehicle movements on the reserve are likely to pose a safety risk to other users. No public facilities may create additional health and safety issues.
Protect access	5	There is no off-street parking and is currently fenced off to protect the area. A concrete kerb and footpath runs along the road edge of the reserve and concrete footpaths are throughout the reserve. Vehicle access would require driving over the kerb, and footpaths potentially causing damage.

		Vehicles parked on the narrow side roads accessing the reserve, may block access to the surrounding roading network and properties.
Total Score	11	

Note: While not changing the assessment criteria for protecting health and safety, this was amended, taking into account the fence which does provide some protection to the vulnerable. This was reduced from 4, and removal of the fence would increase the score back to 4.

Recommendation

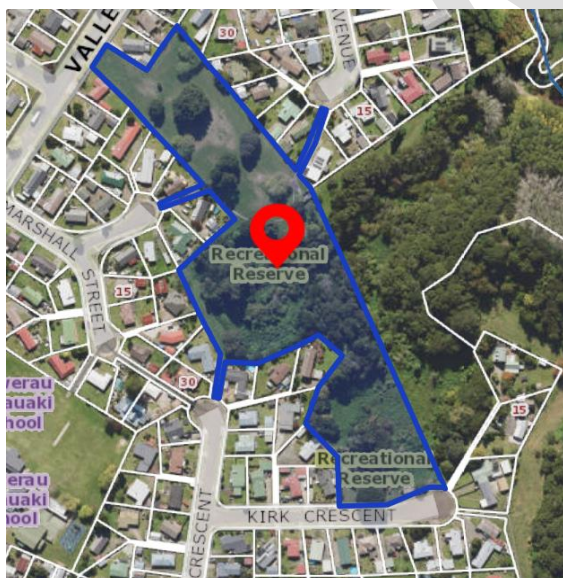
This assessment against the criteria in the Act provides grounds for this site to be restricted or prohibited in a freedom camping bylaw.

The Reserve Management Plan does not provide for freedom camping on neighbourhood reserves; therefore, freedom camping is prohibited on the reserve under section 44(1) of the Reserves Act 1977.

Based on this assessment, it is recommended Council propose to prohibit freedom camping on the Valley Road/Ryder Place Reserve.

Valley Road/Kirk Crescent Reserve

Legal Description	Area (ha)	Reserve Category
Allot 1547 Matata Parish	2.9502	Recreation Reserve



Site description

The Valley Road Kirk Crescent Reserve located between Valley Road and Kirk Crescent. This reserve can be accessed from multiple places including Marshall Street, Blundell Avenue, Valley Road and Kirk Crescent.

The north most area of the reserve is a flat grassed area with well-developed trees, providing a great picnic area for families. This part of the reserve also provides easy access to neighbouring streets and Stoneham Walk. The remaining area is an undulating bush area.

This reserve is a dog friendly reserve.

The reserve is fenced off with locked gates to protect the reserve from vehicles damaging the grassed area.

There are no public facilities in this reserve.

Freedom Camping Act Assessment

Assessment	Score	Comments
Protect the area	3	This reserve forms part of the well-used Stoneham Walk is an important recreational space. Allowing freedom camping will take away from the visitor experience of an open green space. Vehicles may damage the grassed area. The bush area needs to be protected in its natural state.
Protect Health and Safety	3	The bush area is very steep in places posing a health and safety risk, for vehicles and users. No public facilities may create additional health and safety issues.
Protect access	5	There is no off-street parking and the reserve is fenced off to protect the area. A concrete berm and footpaths runs along the road edge of the grassed area by the road and vehicle access would require driving over the kerb, potentially causing damage. Vehicles parked on the narrow roads accessing the reserve, may block easy access of the surrounding roading network.
Total Score	11	

Note: While not changing the assessment criteria for protecting health and safety, this was amended, taking into account the fence which does provide some protection to the vulnerable. This was reduced from 4, and removal of the fence would increase the score back to 4.

Recommendation

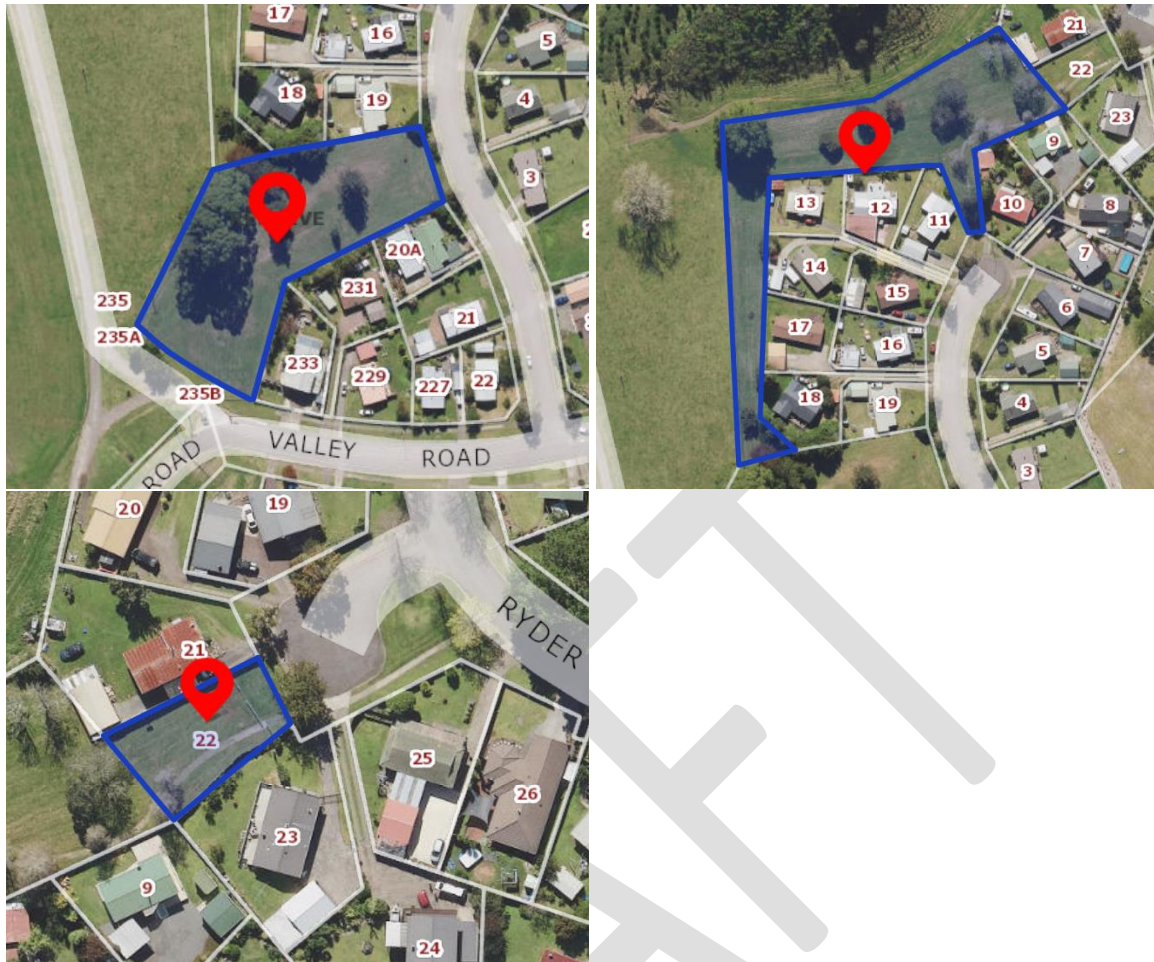
This assessment against the criteria in the Act provides grounds for this site to be restricted or prohibited in a freedom camping bylaw.

The Reserve Management Plan does not provide for freedom camping on neighbourhood reserves; therefore, freedom camping is prohibited on the reserve under section 44(1) of the Reserves Act 1977.

Based on this assessment, it is recommended Council propose to prohibit freedom camping on the Valley Road/Kirk Crescent Reserve.

Valley Road/Delamere Drive Reserve

Legal Description	Area (ha)	Reserve Category
Lot 45 DPS 30483	0.4707	Recreation Reserve
Lot 48 DPS 30482	0.5624	Recreation Reserve
Lot 83 DPS 30068	0.0540	Recreation Reserve



Site description

Valley Road, Delemare Road and Ryder Place Reserves are located to the south west of Kawerau. The reserves lay behind Delemare Road, from the end of Valley Road to Ryder Place. Pedestrian access points include Valley Road, Delemare Road and Ryder Place.

These three reserves form one large, grassed reserve. The reserve is undulating with large trees providing shade for users. This reserve is a designation dog exercise area.

The reserve is fenced off to protect the reserve from vehicles damaging the grassed area and also the safety of users.

There are no public facilities in this reserve.

Freedom Camping Act Assessment

Assessment	Score	Comments
Protect the area	3	This is a local recreational space behind a built up neighbourhood. Residents use the area for exercise and dog walking. Allowing freedom camping will take away from the visitor experience of an open green space. Vehicles may damage the grassed area.
Protect Health and Safety	3	The reserve is available for all pedestrians to share including dog owners exercising their family pets. Enabling access to vehicles would pose a health and safety risk to other users of the reserve.

		No public facilities may create additional health and safety issues.
Protect access	5	There is no off-street parking or formed access into this reserve. A concrete berm and footpaths runs along the road edge of the grassed area by the road and vehicle access would require driving over the kerb, potentially causing damage. Vehicles parked on the narrow roads accessing the reserve, may block easy access of the surrounding roading network.
Total Score	11	

Recommendation

This assessment against the criteria in the Act provides grounds for this site to be restricted or prohibited in a freedom camping bylaw.

The Reserve Management Plan does not provide for freedom camping on neighbourhood reserves; therefore, freedom camping is prohibited on the reserve under section 44(1) of the Reserves Act 1977.

Based on this assessment, it is recommended Council propose to prohibit freedom camping on the Valley Road/Delamare Drive Reserve.

Weld Street Reserve

Legal Description	Area (ha)	Reserve Category
Lot 52 DPS 4603	0.0840	Recreation Reserve



Site description

Weld Street Reserve is located in the middle of Weld Street. Weld Street splits around both sides of the reserve, creating an island in the middle of the roadway.

Weld Street Reserve consists of a flat grassed area with a playground and swings at the northern end of the reserve. The reserve has one large tree providing some shade to the playground area and amenity value. The park is used by the local community.

There is no parking area available. Weld Street is narrow, so freedom campers parked on the road may cause access issues.

Fencing is in place providing some protection along the eastern edge.

There are no public facilities in this reserve.

Freedom Camping Act Assessment

Assessment	Score	Comments
Protect the area	3	This is a local recreational space (open green space) within a built up neighbourhood, providing a playground for local children. The space is small, and surrounded by a roadway. There is no capacity to allow freedom camping while maintaining the recreational opportunities and visitor experience of an open green space and playground.
Protect Health and Safety	4	Families use the reserve and playground which can create a hazards with children coming and going across the road. Enabling access to vehicles would pose a health and safety risk to other users of the reserve. No public facilities may create additional health and safety issues.
Protect access	3	There is no parking available and a concrete berm surrounding the reserve. Driving over the berm and grass may cause unnecessary damage.
Total Score	10	

Note: While the initial assessment of protecting the area, did not consider amenity, it also had not considered the importance of the recreational space within a built up area which provides recreational opportunities and open green space locally. Increased from 2.

Recommendation

This assessment against the criteria in the Act provides grounds for this site to be restricted or prohibited in a freedom camping bylaw.

The Reserve Management Plan does not provide for freedom camping on neighbourhood reserves; therefore, freedom camping is prohibited on the reserve under section 44(1) of the Reserves Act 1977.

Based on this assessment, it is recommended Council propose to prohibit freedom camping on the Weld Street Reserve and the adjacent road (Weld Street).

8.3 Local Purpose Reserves - Amenity Reserves

Local purpose reserves were created by the Reserves Act "... for the purpose of providing and retaining areas for such local purpose or purposes as are specified in any classification of the reserve" (S.23 Reserves Act 1977). Local purpose reserves cater for uses such as esplanade, utility, roads, streets and service lanes. An important local purpose reserve in Kawerau is the Kawerau Cemetery.

A number of amenity reserves and strips have been set aside in Kawerau to improve the visual appearance of the town. The two bigger reserves are at Beattie Road and

Owen/Julian Road. A series of small amenity strips beautify the roadside along Fenton Street and Tamarangi Drive.

8.3.1 Local Purpose Reserves – General

Beattie Road Local Purpose Reserve

Legal Description	Area (ha)	Reserve Category
Lot 44 DPS 34292	0.0774	Recreation Reserve
Pt Allot 499 Matata Parish	59.4888	Utility Reserve



Site description

Beattie Road Reserve is located off the northeast end Beattie Road. This reserve lays between Beattie Road and the Dump Reserve. Dump Reserve is a very large reserve which incorporates the water supply pump house, the refuse transfer station and the recycling collection facility.

Beattie Road Reserve is a small undulating grassed reserve with the overflow stream running through from the middle in an easterly direction.

Access to the Beattie Road Reserve is predominately on foot. There is a gate preventing vehicle access from Beattie Road.

There is no parking area available and no public facilities in this reserve.

Freedom Camping Act Assessment

Assessment	Score	Comments
Protect the area	3	Protection of the overflow drain is required to ensure it remains fit for the purpose of drainage.
Protect Health and Safety	2	This reserve is essentially an overflow drain and as such presents a health and safety risk as the area is not suitable for vehicles or camping in any form. There is no public toilets or facilities at this reserve.
Protect access	4	There is formed access to the reserve, however there is no developed roadway or parking area. Access is only for maintenance purposes. Access needs to be protected to ensure the overflow drain is not compromised.
Total Score	9	

Recommendation

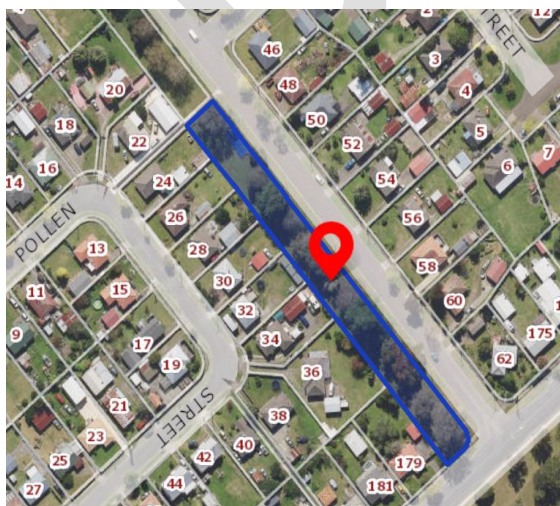
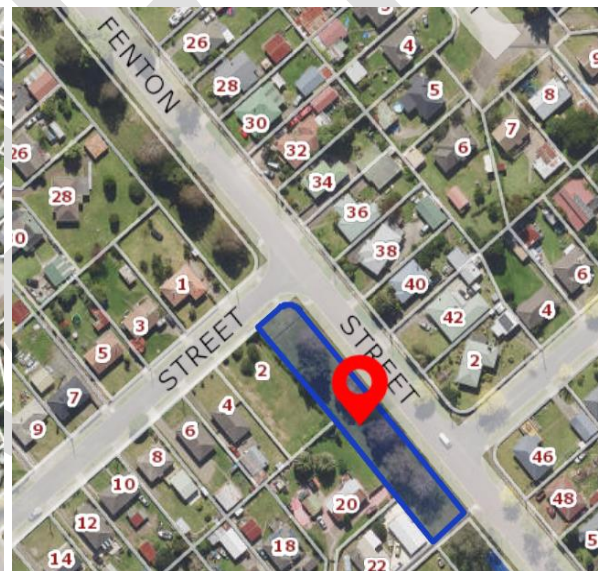
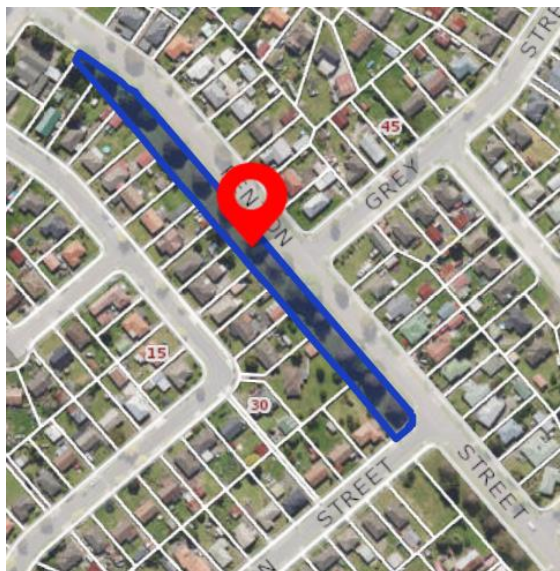
This assessment against the criteria in the Act provides grounds for this site to be restricted or prohibited in a freedom camping bylaw.

The Reserve Management Plan does not provide for freedom camping on neighbourhood reserves; therefore, freedom camping is prohibited on the reserve under section 44(1) of the Reserves Act 1977.

Based on this assessment, it is recommended Council propose to prohibit freedom camping on the Beattie Road Local Purpose Reserve.

Fenton Street Reserve

Legal Description	Area (ha)	Reserve Category
Lot 128 DPS 4503	0.4156	Local Purpose/Amenity Reserve
Lot 127 DPS 4503	0.1486	Local Purpose/Amenity Reserve
Lot 157 DPS 4502	0.2777	Local Purpose/Amenity Reserve



Site description

Fenton Street Reserve is located along the western edge of Fenton Road.

The reserve is a small grassed reserve with large trees contributing to the pleasantness and attractiveness of the area. There are residential properties surrounding the reserve.

The reserve is fenced off and there is no off street parking available.

There are no public facilities in this reserve.

Freedom Camping Act Assessment

Assessment	Score	Comments
Protect the area	2	The purpose of this reserve is to contribute to the environmental pleasantness and attractiveness of the area. This is a local open green space within a built up neighbourhood and provides recreational opportunities.
Protect Health and Safety	1	No health and safety concerns.
Protect access	5	This reserve is fenced off and there is no off street parking available. A concrete kerb runs along the road edge of the reserve. Vehicle access would require driving over the kerb, and potentially damaging the kerb and fencing.
Total Score	8	

Note: This assessment of protecting the area, removed the consideration of amenity, however the initial assessment had not considered the importance of the recreational space within a built up area, which provides recreational opportunities and open green space locally. While other similar assessments scored 3, the purpose of this reserve is local purpose/amenity and not recreational. Reduced from 3.

Recommendation

This assessment against the criteria in the Act provides grounds for this site to be restricted or prohibited in a freedom camping bylaw based on the assessment of one element scoring 5.

The Reserve Management Plan does not provide for freedom camping on neighbourhood reserves; therefore, freedom camping is prohibited on the reserve under section 44(1) of the Reserves Act 1977.

Based on this assessment, it is recommended Council propose to prohibit freedom camping on the Fenton Street Reserve.

Owen/ Julian Road Reserve

Legal Description	Area (ha)	Reserve Category
Lot 117 DPS 34294	0.1631	Recreation/Local Purpose/Amenity Reserve



Site description

Owen/Julian Road Reserve is located in between Owen Road and Julian Road. On the north-east boundary the reserve meets Hilldale Reserve and towards the south west corner is farmland.

The reserve is a small grassed amenity strip which contributes to the environmental pleasantness and attractiveness of the area. There are residential properties along both sides of the reserve. Three of the bordering sections are currently undeveloped.

The reserve is fenced and has no off street parking available.

There are no public facilities in this reserve.

Freedom Camping Act Assessment

Assessment	Score	Comments
Protect the area	3	The purpose of this reserve is to contribute to the environmental pleasantness and attractiveness of the area. This also provides This is a local open green space and provides recreational opportunities for visitors. Underground water waster, storm water and water assets require protection from vehicles driving on the reserve.
Protect Health and Safety	1	No health and safety concerns.
Protect access	5	This reserve is fenced off and there is no off street parking available. A concrete kerb runs along the road edge of the reserve. Vehicle access would require driving over the kerb, and potentially damaging the kerb and fencing.
Total Score	9	

Recommendation

This assessment against the criteria in the Act provides grounds for this site to be restricted or prohibited in a freedom camping bylaw.

The Reserve Management Plan does not provide for freedom camping on neighbourhood reserves; therefore, freedom camping is prohibited on the reserve under section 44(1) of the Reserves Act 1977.

Based on this assessment, it is recommended Council propose to prohibit freedom camping on the Owen/Julian Road Reserve.

Reserve near Manukorihi Drive

Legal Description	Area (ha)	Reserve Category
Lot 8 DPS 40871	1.4727	Local Purpose Reserve (Esplanade)



Site description

This reserve is located off Manukorihi Drive and runs along the eastern edge of the Tarawera River. On the opposite side the reserve meets the rear of the industrial area.

The reserve is a combination of a small grassed area and trees and scrubs which form a natural barrier along the river banks.

There is not vehicle access or off street parking.

There are no public facilities in this reserve.

Freedom Camping Act Assessment

Assessment	Score	Comments
Protect the area	4	The Tarawera River and esplanade along the river embankment has high value to the community, and is both culturally and naturally significant, requiring protection.

Protect Health and Safety	1	No health and safety concerns.
Protect access	5	There is no vehicle access to this reserve and no formed access ways.
Total Score	10	

Recommendation

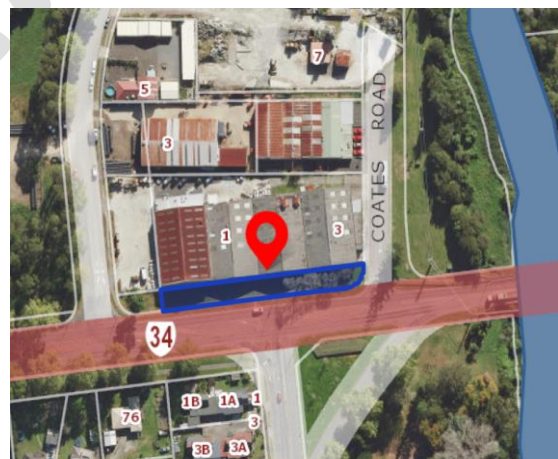
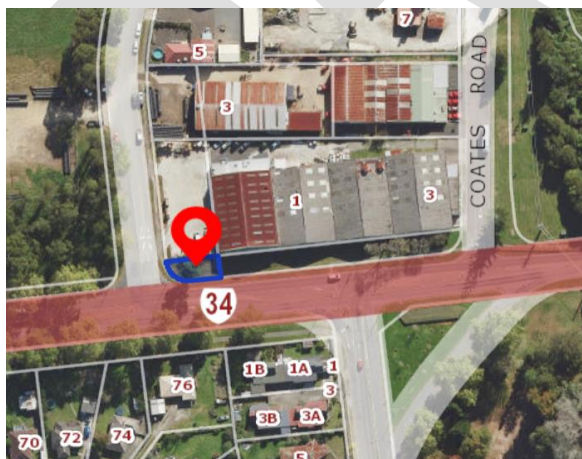
This assessment against the criteria in the Act provides grounds for this site to be restricted or prohibited in a freedom camping bylaw.

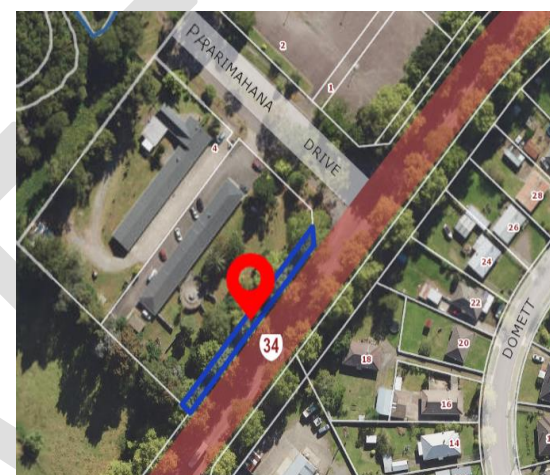
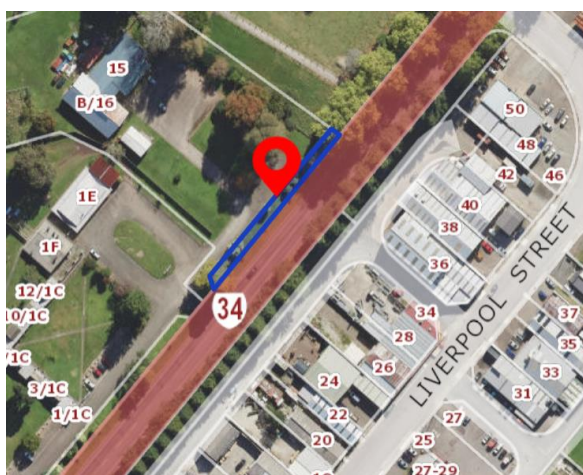
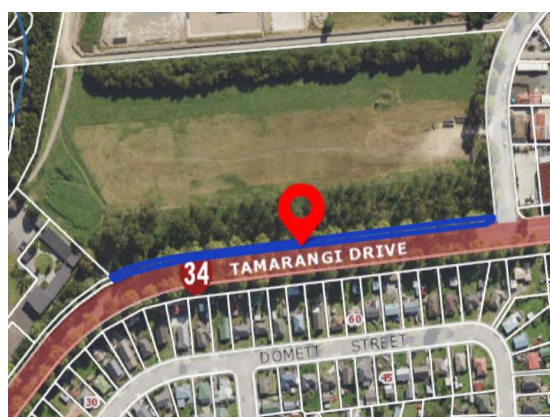
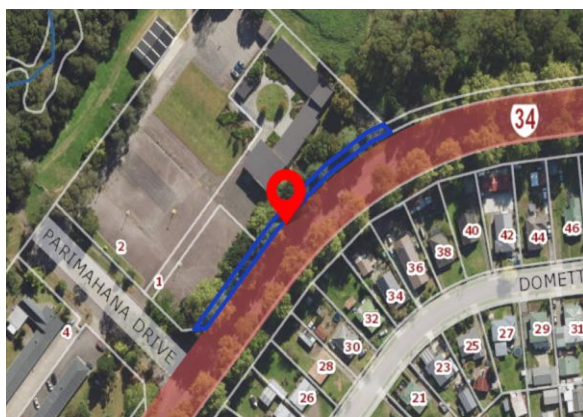
The Reserve Management Plan does not provide for freedom camping on neighbourhood reserves; therefore, freedom camping is prohibited on the reserve under section 44(1) of the Reserves Act 1977.

Based on this assessment, it is recommended Council propose to prohibit freedom camping on the Reserve near Manukorihi Drive.

Tamarangi Drive (North Side of Road)

Legal Description	Area (ha)	Reserve Category
Lot 1 DPS 7688	0.0876	Local Purpose - Plantation Reserve
Allot 1211 Matata Psh	0.0173	Local Purpose - Plantation Reserve
Allot 1212 Matata Psh	0.1520	Local Purpose - Plantation Reserve
Allot 1522 Matata Psh	0.0606	Local Purpose - Plantation Reserve
Allot 823 Matata Psh	0.0378	Plantation Reserve
Allot 354 Matata Psh	0.0366	Plantation Reserve
Allot 353 Matata Psh	0.0823	Plantation Reserve

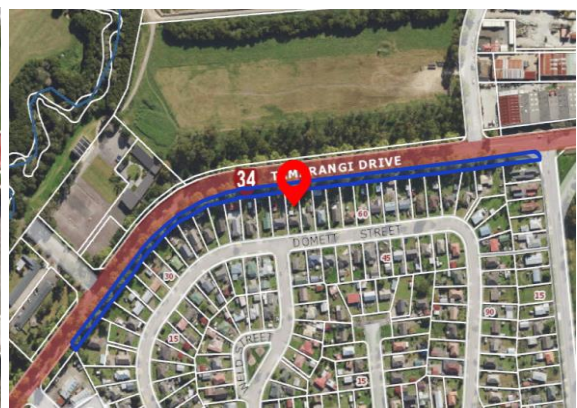
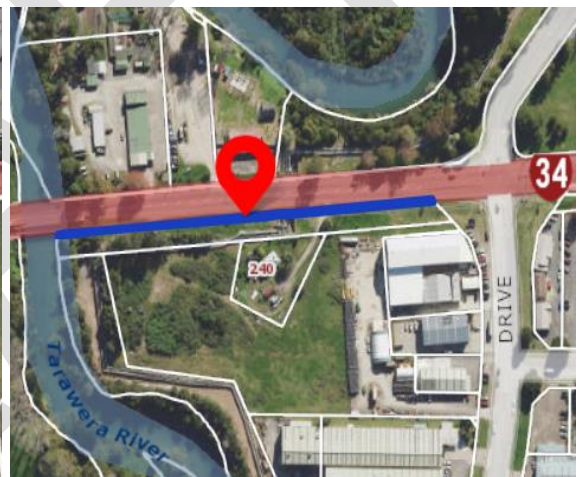
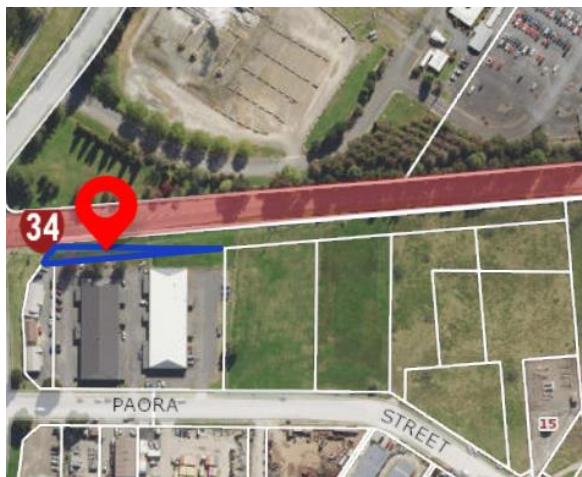
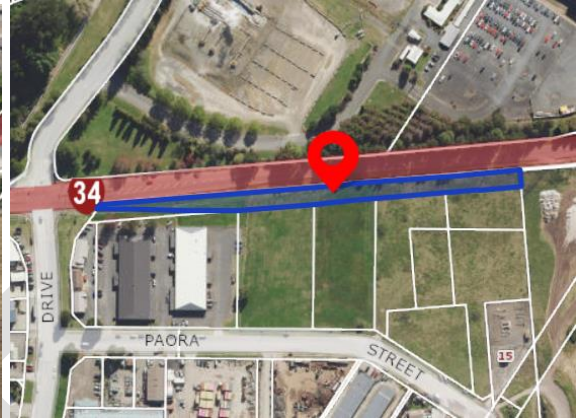


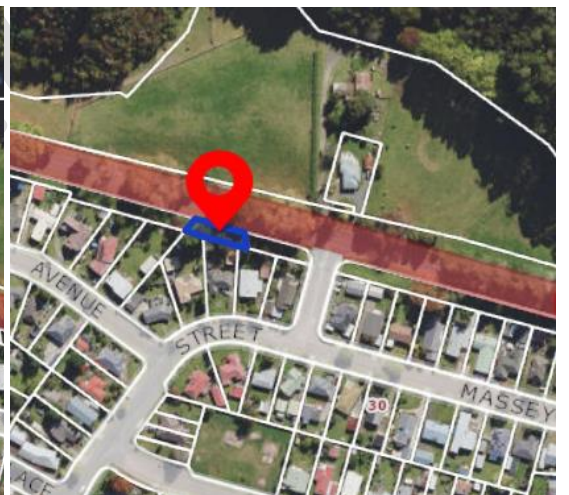
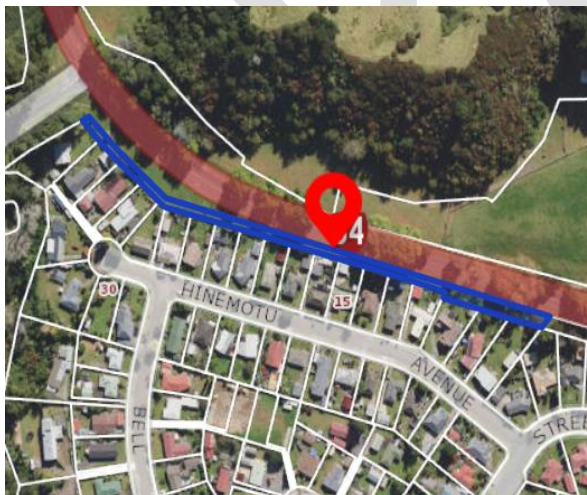
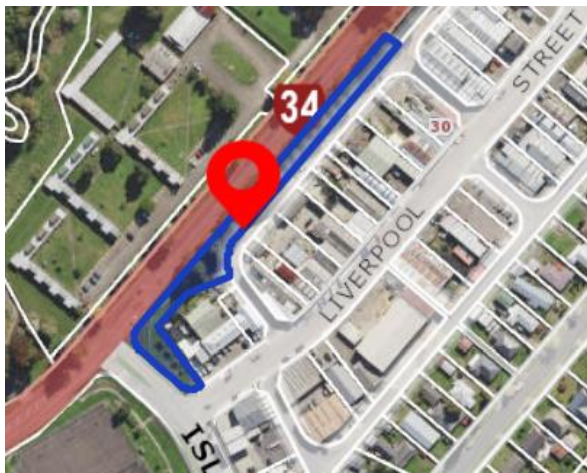
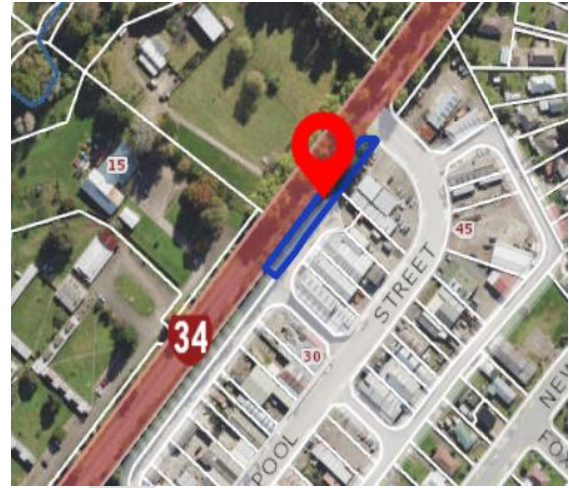
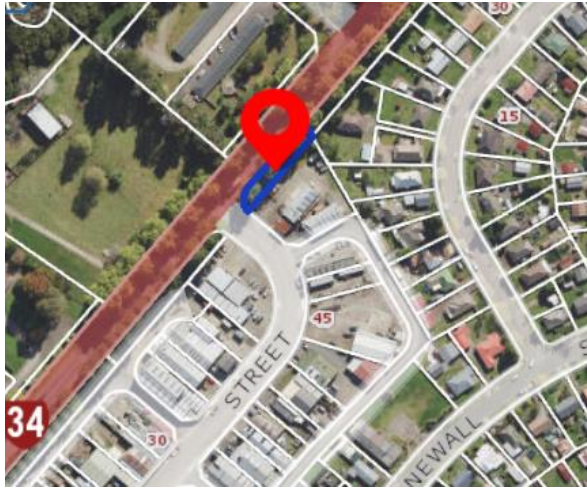


Tamarangi Drive (South Side of Road)

Legal Description	Area (ha)	Reserve Category
Lot 1 DP 377787	0.0804	Freehold
Lot 1 DP 387886	0.3806	
Lot 4 DP 387886	0.0580	Local Purpose Reserve (Service and Amenity)
Lot 6 DPS 40869	0.0467	Local Purpose Reserve (Service and Amenity)
Lot 4 DPS 40871	0.3405	Local Purpose Reserve (Service and Amenity)
Lot 179 DPS 4603	0.5371	Plantation Reserve

Lot 6 DPS 11678	0.0491	Plantation Reserve
Lot 1 DPS 11678	0.0844	Local Purpose Reserve
Lot 3 DPS 5727	0.2518	Local Purpose Reserve
Lot 84 DPS 9663	0.2117	Plantation Reserve
Lot 59 DPS 7302	0.0318	Plantation Reserve
Lot 35 DPS 5013	0.0367	Local Purpose Reserve
Lot 12 DPS 5013	0.1867	Local Purpose Reserve







Site description

Tamarangi Driver Reserve (North side and South side) are located along the edges of Tamarangi Drive providing a scenic boundary to the state highway.

The reserves are grassed reserves with large trees lining the edge of the roadside.

There is a footpath that runs along the southern side, providing a walking track which is used for walkers and for exercising dogs.

There are no constructed entrances to the reserves and the reserves are bordered by a concrete kerb.

There is no vehicle access or off street parking.

There are no public facilities in this reserve.

Freedom Camping Act Assessment

Assessment	Score	Comments
Protect the area	2	The purpose of this reserve is to contribute to the environmental pleasantness and attractiveness of the area.
Protect Health and Safety	2	Low health and safety concerns, however if freedom camping was allowed there would be an increased risk with shared footpaths.
Protect access	4	These reserves have no off street parking available. A concrete kerb runs along the road edge of the reserve. Vehicle access would require driving over the kerb, and potentially damaging the kerb.
Total Score	8	

Note: This assessment of protecting the area, removed the consideration of amenity. Reduced from 3. While no changing the assessment criteria for protecting access, this was amended to better reflect the scoring system. The initial assessment had incorrectly included the fence in the assessment, however only a portion of this area is fence off. Reduced from 5.

Recommendation

This assessment against the criteria in the Act does not support the restriction or prohibition of this site in the freedom camping bylaw.

The Reserve Management Plan does not provide for freedom camping on this local purpose reserves; therefore, freedom camping is prohibited on the reserve under section 44(1) of the Reserves Act 1977.

Based on this assessment, it is recommended that Council does not include this site in the bylaw and freedom camping on the reserve remains prohibited under s44 of the Reserves Act 1977.

8.3.2 Local Purpose Reserves - Esplanade Reserves

Esplanade reserves are associated with coastal, lakesides and riverside reserves. Kawerau District Council has a number of reserves which include sections along Tarawera River and Ruruanga Stream.

Kawerau District Council have two lots specifically identified as Esplanade Reserves, these are:

Stoneham Walk – Pt Lot 85 DPS 9663 and Lot 86 DPS 9663

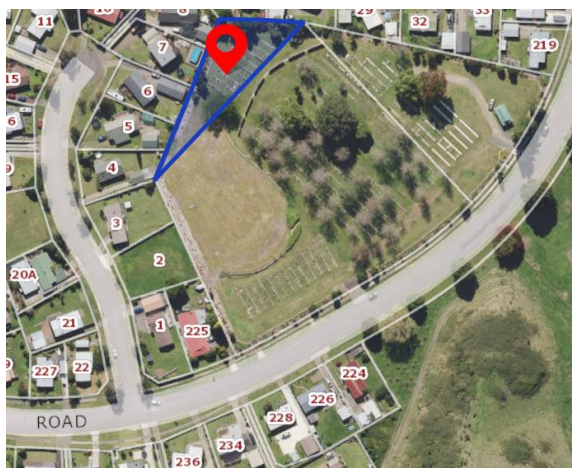
This reserve has been assessed under Recreation Reserves with all other legal titles combined to make up Stoneham Walk.

8.3.3 Local Purpose Reserves – Cemetery

Cemetery

Legal Description	Area (ha)	Reserve Category
Pt Allot 329 Matata Psh	1.3000	Local Purpose Reserve
Lot 84 DPS 30068	0.4428	Local Purpose Reserve
Allot 849 Matata Psh	0.1606	Local Purpose Reserve





Site description

The Kawerau District Cemetery has one cemetery which is open for burials. The Cemetery is located off Valley Road.

Cemeteries are sensitive places which support our sense of community and reflect the history of our local people and cultures which have founded and influenced the district. They provide a place where family and friends can come to care for and mourn the loss of their loved ones, consistent with their culture and beliefs.

The cemetery has three established vehicle access ways. Each access way has a gate with is locked unless open for funeral requirements. Although the reserve is not fences, there are established gardens between each of the gates providing a scenic boundary fronting the cemetery.

Public facilities are available with toilets being open to the public.

Freedom Camping Act Assessment

Assessment	Score	Comments
Protect the area	5	The cemetery is a sensitive area with high value to the community, being both culturally and historically significant. It is important that the area be protected.
Protect Health and Safety	4	Cemeteries are used frequently by pedestrians including elderly people and children. Freedom camping does pose a health and safety risk to cemetery visitors, through a reduction of visibility and limited space. There is also health and safety concerns due to the likelihood of open ground (plots), use of digging equipment and burial services taking place.
Protect access	3	The cemetery has limited accessibility for vehicles to protect the grounds. Pedestrian access to the cemetery is available of Valley Road. Freedom camping vehicles, even parked on the road side, would impede on the access to others and the visibility of those visiting their loved ones.
Total Score	12	

Recommendation

This assessment against the criteria in the Act provides grounds for this site to be restricted or prohibited in a freedom camping bylaw.

Based on this assessment, it is recommended Council propose to prohibit freedom camping at the Kawerau Cemetery.

8.3.4 Local Purpose Reserves – Utility Reserves

Local purpose utility reserves are used for the purpose of providing utilities or drainage with Kawerau. Kawerau District Council have two utility reserves being the Dump Reserve (includes Pat Baker Reserve) and the Beattie Road Reservoir Reserve.

Beattie Road Reservoir Reserve

Legal Description	Area (ha)	Reserve Category
Lot 1 DPS 43063	7.3796	Utility Reserve



Site description

The Beattie Road Reservoir Reserve is located off Beattie Road to the south west. The reserve is land locked by private land.

The reserve is a large lot that is covered in established native trees.

There is no public access to this reserve.

Public facilities are not available.

Freedom Camping Act Assessment

Assessment	Score	Comments
Protect the area	5	This reserve is covered in native trees and should be protected.
Protect Health and Safety	1	No health and safety concerns.
Protect access	5	There is no road access to this reserve.
Total Score	11	

Recommendation

This assessment against the criteria in the Act provides grounds for this site to be restricted or prohibited in a freedom camping bylaw.

Based on this assessment, it is recommended Council propose to prohibit freedom camping at the Beattie Road Reservoir Reserve.

8.4 Council Owned Land

Circus Paddock

Legal Description	Area (ha)	Land Category
Part Lot 1 DPS 5500	1.1400	Freehold Commercial



Site description

Circus paddock is located on the corner of Plunket and Onslow Street. The area known as Circus paddock is council owned freehold land.

The land area includes two paved carparks. Kawerau Cosmopolitan Club uses one carpark and the other paved car parking area is associated with the recreational space including the basketball court, skate park and recreational space.

Near the circus paddock, is approximately 1000m² of geothermally active land. Some steam comes through vents in the ground and a sulphur smell is evident. While the area is not considered dangerous and is not hot, there is some unpredictability area geothermal activity.

Geothermal gases can be dangerous at high concentrations and levels are monitored at the Ron Hardie Recreation Centre which borders the Circus paddock.

Circus paddock is used for local events, including currently being home to the local markets.

There are no public facilities at Circus paddock.

Council is considering a lease of this land in which case the land would be outside the scope of the Freedom Camping Bylaw as it will no longer be controlled or managed by Council.

Freedom Camping Act Assessment

Assessment	Score	Comments
Protect the area	2	Circus paddock is used for local events. The capacity and availability of the area may be reduced where large numbers of freedom campers are parking in this area. This would reduce the recreational value of the current space.
Protect Health and Safety	3	This area may be affected by geothermal gases, however dangerous level are not expected at Circus paddock. Vehicle access near the skate parks and adjoining basketball court raises health and safety concerns due to the unpredictability of children and their social activities.
Protect access	3	Vehicle access and off-street parking is available, however the parking area is used by the Cosmopolitan Club. To access the grassed area, vehicle must drive over the kerb or remove a wooden post protecting the reserve from vehicle. This may cause damage to the area, although the market accesses with vehicles on a regular basis.
Total Score	8	

Note: While no changing the assessment criteria for protecting access, this was amended to better reflect the scoring system. The initial assessment placed higher emphasis on the use of the carpark by an existing commercial business. Reduced from 4.

Recommendation

This assessment against the criteria in the Act does not support the restriction or prohibition of this site in a freedom camping bylaw.

As freehold land, the Circus Paddock does not come under the reserves management plan. This means Circus Paddock should be available for Freedom Camping.

In saying this, Council is currently negotiating a proposed lease of the Circus Paddock. Where the land is leased, the land will no longer be available for freedom camping and is excluded from the Freedom Camping Act requirements.

Based on this assessment, and the proposed lease, it is recommended, that Council excludes Circus Paddock from the Bylaw.