

# FACT SHEET

## 2022 election

### 8 OCTOBER 2022



### What does Council do?

The District Council meets regularly to make many decisions that impact the day-to-day lives of people in the Kawerau area. The Council governs a wide range of local services including roads, water systems, rubbish collection, libraries, parks, community centres, dog registration, community and economic development and district planning.

### Background

Local government triennial elections are being held by postal vote on Saturday 8 October 2022 and will be undertaken by Election Services, under contract to the Kawerau District Council.

The first past the post (FPP) electoral system will be used for the Kawerau District Council elections and the Bay of Plenty Regional Council elections.

### 2022 Key Dates

Nominations open	Friday 15 July
Nominations close	Noon, Friday 12 August
Delivery of voting packs	from Friday 16 September
Close of voting	Noon, Saturday 8 October
Official results announced	Thursday 13 October

### Who is being elected?

Elections will be required for the following positions:

- Mayor (elected 'at large')
- Councillors (8 elected 'at large')
- Bay of Plenty Regional Council Members (either 2 members from the Eastern Bay of Plenty General Constituency or 1 member from the Kōhi Māori Constituency).

There will be no district health board elections in 2022.

### How can I be nominated?

Nominations for these positions will open on **Friday 15 July 2022** and close at noon on **Friday 12 August 2022**.

Nomination papers will be available during this period:

- from the District Office, 2 Ranfurly Court, Kawerau;
- by accessing [www.kaweraudc.govt.nz](http://www.kaweraudc.govt.nz);
- by telephoning the electoral office on 0800 922 822.

To be eligible to stand for election, a candidate **must** be:

- a New Zealand citizen (by birth or naturalisation ceremony); **and**
- enrolled as a Parliamentary elector (anywhere in New Zealand); **and**
- nominated by two electors whose names appear on the electoral roll within the respective area that a candidate is standing for.

A detailed candidate information handbook will be available from April 2022.

### Who can vote?

Those eligible to vote are all resident electors and non-resident ratepayer electors whose names appear on the electoral roll when it closes on Friday 12 August 2022. The Preliminary Electoral Roll will be available for public inspection from **Friday 15 July 2022** to **Friday 12 August 2022** at the District Office, 2 Ranfurly Court, Kawerau.

Resident Roll: All parliamentary electors, including those on the Māori Electoral Roll, are automatically enrolled on the Resident Roll, at the address where they live.

Any alterations to the Resident Roll (e.g. change of address details, including new postal addresses) should be made by:

- completing the appropriate form at any postal agency;
- phoning 0800 ENROLNOW (0800 36 76 56)
- accessing the Electoral Commission website on [www.vote.nz](http://www.vote.nz)

Ratepayer Roll: If a person is on the parliamentary roll in one area and pays rates on a property in another area, this person may be eligible to be enrolled on the non-resident ratepayer roll. A firm, company, corporation or society paying rates on a property may nominate one of its members or officers as a ratepayer elector (provided the nominated person resides outside the area). Ratepayer Roll enrolment forms are available at [www.kaweraudc.govt.nz](http://www.kaweraudc.govt.nz), or by phoning 0800 922 822.

### How to vote?

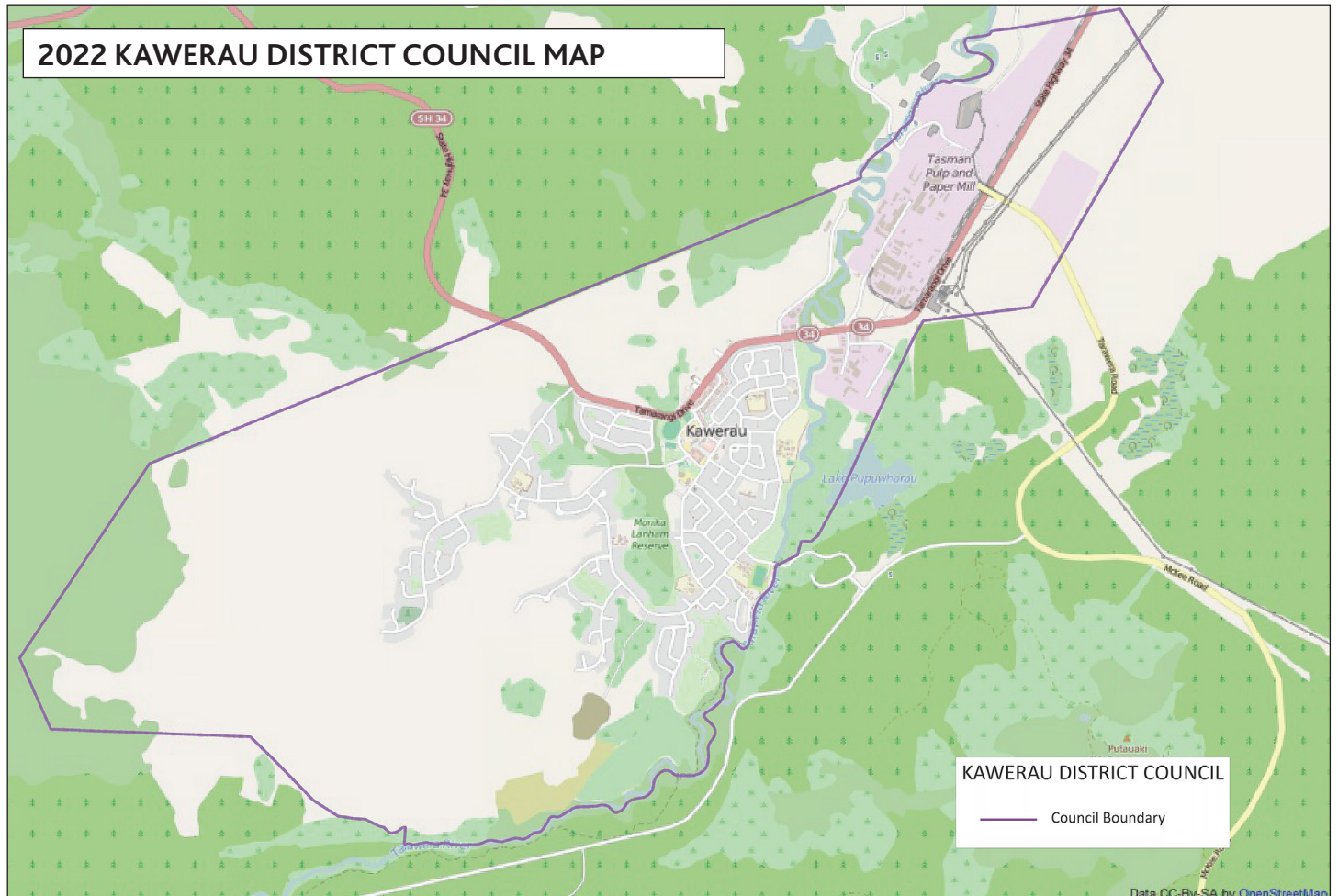
Voting packs will be sent out in the mail to all those who have enrolled from **Friday 16 September 2022**.

The voting period is three weeks (**Friday 16 September 2022 to noon Saturday 8 October 2022**). Electors may post their completed voting documents back to the electoral officer using the orange pre-paid envelope sent with their voting document.

A polling place for the issuing of special voting documents and for the receiving of completed voting documents will be available from Friday 16 September 2022 to noon Saturday 8 October 2022 at the District Office, 2 Ranfurly Court, Kawerau.

To be counted, all completed voting documents must be in the hands of the electoral officer or an electoral official by **noon Saturday 8 October 2022**.

Progress results will be announced early afternoon on election day. Preliminary results will be announced on Sunday morning, 9 October 2022, and final results will be known on Thursday 13 October 2022. All results will be accessible on Council's website: [www.kaweraudc.govt.nz](http://www.kaweraudc.govt.nz)



## Contact us



Dale Ofsoske, Electoral Officer  
Independent Election Services Ltd  
Level 2, 198 Federal Street, Auckland  
PO Box 5135, Victoria Street West, Auckland 1142  
Email: [info@electionservices.co.nz](mailto:info@electionservices.co.nz)  
Phone: 0800 922 822

Peter Christophers, Council Liaison Person  
Kawerau District Council  
The District Office, Ranfurly Court, Kawerau  
Private Bag 1004, Kawerau 3169  
Email: [peter.christophers@kaweraudc.govt.nz](mailto:peter.christophers@kaweraudc.govt.nz)  
Phone: 07 306 9009